

Fact Sheet for 2021 Academic Year

CONTENTS

1. Features of the Meiji University Exchange Student Program	2
2. Campus Information	3
3. Housing for Exchange Students	4
4. Academic Calendar	24
5. Scholarship	25
6. Class, Japanese-language classes	26
7. Exams, Grades and Academic Transcripts	27
8. Living Expenses	28
9. Curriculum, List of faculty members, Syllabus	29
Undergraduate Schools which Offer Classes in Japanese	29
Graduate Schools which Offer Classes in Japanese	32
Undergraduate Schools which Offer Classes in English	35
Graduate Schools which Offer Classes in English	37

1. Features of the Meiji University Exchange Student Program

(1) Classes

Of the 13,000 class sessions offered at Meiji University, 12,000 are conducted in Japanese. For this reason, those applying for admission to the exchange student program are generally required to have a certain level of Japanese-language proficiency. (However, the English Track of the school of Global Japanese Studies, the English Track of the graduate school of Governance Studies, the International Program in Architecture and Urban Design of the graduate school of Science and Technology and the graduate school of Global Governance or will be taking classes in English in the school of Business Administration/ school of Political Science and Economics/ graduate school of Business Administration/ graduate school of Global Business do not require Japanese-language skills.)

(2) Academic Advisors

Academic advisors provide assistance in creating study plans according to the interview held at Meiji University and consultation for study and student life. Upon their arrival in Japan, exchange students will meet with their academic advisors and create study plans. There may be restrictions on the classes a student may take based on their Japanese proficiency level.

Undergraduate exchange students (other than the school of Commerce, the school of Science and Technology and the school of Agriculture) are assigned the academic advisor according to preferred field of study, preferred classes at Meiji, language proficiency (Japanese or English) and study plan.

(3) Supervisors, Seminars/Laboratories (“Zemi”)

- ① Supervisors provide instruction directly to students in seminars/laboratories (“zemi”). Seminars/laboratories are comprised of 10–20 students and encourage active discussions with the supervisors. Students participating in these seminars/laboratories are able to interact with other students (excluding students in the English Track of the Graduate School of Governance Studies).
- ② Not all students can participate in the seminars/laboratories. Participation depends on Japanese-language proficiency and the number of seats available. Upon their arrival in Japan, exchange students will meet with their academic advisors and create study plans that include these seminars/laboratories if appropriate.
- ③ Students accepted into the English Track of the Graduate School of Governance Studies will not participate in a seminar. However, they must take a course called “research methods” conducted during their study-abroad term taught by the supervisor the graduate school assigns to them. They must also take at least one class taught by that supervisor.

<Notes>

Applicants to the school of Commerce, the school of Science and Technology, the school of Agriculture and graduate schools are required to choose the preferred supervisors in the online application. Please note you are not necessarily assigned the supervisor which you chose in the online application. Supervisor is decided by your undergraduate/graduate school according to the interview held at Meiji University.

2. Campus Information

Meiji University website	https://www.meiji.ac.jp/index.html	
Basic university information	https://www.meiji.ac.jp/koho/about/index.html	
University locations	Surugadai Campus: 1-1 Kanda-Surugadai, Chiyoda-ku, Tokyo	
	Izumi Campus: 1-9-1 Eifuku, Suginami-ku, Tokyo	
	Ikuta Campus: 1-1-1 Higashi-Mita, Tama-ku, Kawasaki-shi, Kanagawa	
	Nakano Campus: 4-21-1 Nakano, Nakano-ku, Tokyo	
Campus information	Surugadai	https://www.meiji.ac.jp/koho/campus_guide/suruga/campus.html
	Izumi	https://www.meiji.ac.jp/koho/campus_guide/izumi/campus.html
	Ikuta	https://www.meiji.ac.jp/koho/campus_guide/ikuta/campus.html
	Nakano	https://www.meiji.ac.jp/koho/campus_guide/nakano/campus.html

3. Housing for Exchange Students

[1] Conditions of application for dormitory (IMPORTANT)

In order to apply for the dormitory of Meiji University, students must agree with the conditions listed below.

*Those who do not agree with any of the conditions are NOT allowed to apply for nor stay in the dormitory of Meiji University.

① Housing arrangement

- (1) Housing arrangement for each student will be decided by Meiji University depending on the state of acceptance of exchange students each semester. For this reason, **only those who are willing to stay in any of the dormitories can apply for a room** (6 dormitories are available as of fall semester, 2020 AY).

You may not be assigned as you wish. In this case, you are NOT allowed to refuse, or decline the dormitory after the housing arrangement is decided.

Students need to follow the regulations regarding the smoking and drinking in the dormitory. Also, there are several dormitories which prohibit from accessing to building and rooms occupied by opposite gender.

Students must follow these regulations when staying in dormitory. In case you do not ensure it, you must not apply for the dormitory and are asked to arrange the accommodation by yourself.

- (2) Students are NOT allowed to select, refuse, or decline any particular dormitory in their application or after the housing arrangement is decided. (See [3] Overview of the dormitory for exchange students and housing arrangement.)
- (3) **Any changes nor cancels of the dormitory are not acceptable after submitting the Housing Form.**
For this reason, it is strongly recommended that students consider the conditions of each dormitory and their student life before the application.

② Period of stay and rent

- (1) The period of your occupancy of the room is from the first day of the check-in dates (during the orientation weeks) to about 1 week after the last day of the classes and final exams, and it is designated by Meiji University. The rent are calculated based on the occupancy period. Rent will be charged for the whole period.
- (2) Rent is charged to each resident depending on the period of the occupancy. The rent of the first

month and the last month of the occupancy is calculated by daily rate of the rent.

Payment is basically to be made by semester designated by Meiji University academic calendar.

Residents are required to pay the whole rent for the first one semester (about 5 months) before the arrival. Residents who study at Meiji for 1 year are required to pay the rent for second semester after arrival before the start of the second semester.

- (3) The fees which have once been paid to the university shall not be refundable for whatever reason. Meiji University does not make any settlement nor refund to the residents, regardless of the actual check-in and check-out dates.

<Estimated total amount of rent>

(Total amount of rent varies from the check in and out dates designated by Meiji University. Accordingly, final total amount of rent may differ from the amounts shown.)

Dormitory	Monthly Rent (Room rent per month)	<u>Estimated total</u> amount of rent (Duration of Study abroad at Meiji: 1 semester from April)	<u>Estimated total</u> amount of rent (Duration of Study abroad at Meiji: 1 year from April)	<u>Estimated total</u> amount of rent (Duration of Study abroad at Meiji: 1 semester from September)	<u>Estimated total</u> amount of rent (Duration of Study abroad at Meiji: 1 year from September)
Izumi International House	75,000 JPY	360,000 JPY -	810,000 JPY -	400,000 JPY -	850,000 JPY -
Komae International House	48,000 JPY	230,000 JPY -	520,000 JPY -	260,000 JPY -	540,000 JPY -
Tokyo Female Students Dormitory	50,000 JPY	240,000 JPY -	543,000 JPY -	270,000 JPY -	565,000 JPY -
DK HOUSE Tokyo Shinkoiwa	50,000 JPY	240,000 JPY -	543,000 JPY -	270,000 JPY -	565,000 JPY -
Uni E'meal Meidaimae Global House	75,000 JPY	360,000 JPY -	810,000 JPY -	400,000 JPY -	850,000 JPY -
Meiji Global Village	70,000 JPY	350,000 JPY-	770,000 JPY-	390,000 JPY-	800,000 JPY-

[2] Arrange the accommodation by yourself (Look for housing by yourself)

You need a guarantor to rent an apartment. For students who cannot find a guarantor in Japan, Meiji University recommends a guarantor company. Exchange students who are enrolled in Meiji University can get special price and service from the guarantor company. For more details, please contact Global Trust Networks Co, Ltd. (GTN). (Mail to: info@gtn.co.jp)

Once you select “Look for housing by yourself” in the Housing Form, Meiji University dormitory cannot be arranged. (You can’t apply for Meiji University dormitory after submitting the Housing Form.)For this reason, it is strongly recommended that students consider the conditions of each option and their student life before submitting the Housing Form.

① Guarantor Company

Global Trust Networks Co, Ltd.

1-21-11 2nd Floor Oak Ikebukuro Building, Higashiikebukuro, Toshima-ku, 170-0013

TEL: 03-5280-1504 / FAX: 03-5280-1505 / Email: info@gtn.co.jp

<https://www.gtn.co.jp/en/>

② Requirements

■ Exchange students enrolled in Meiji University

*You are not eligible for this service when you withdraw, expelled, or under disciplinary action from the university.

■ Must obtain a student visa.

■ You must follow the instructions from Meiji University International Student Center.

③ How to contract

1) Prepare required documents for the screening

A. Copy of COE (Certificate of Eligibility) or Copy of Resident Card (front and back)

B. Acceptance letter issued by Meiji University

C. Copy of passport (page of your photo)

D. Emergency contact information (One of your parents and one of acquaintances who live in Japan. If you don't have any acquaintances who live in Japan, only contact information for one of your parents is acceptable.)

*COE (A) and Acceptance letter (B) will be sent to your home university via EMS by Meiji University around the middle of February 2021 for the spring 2021, and the middle of July 2021 for the fall 2021.

2) Contact GTN and follow their instructions for the contract. (Mail to: info@gtn.co.jp)

[3] Overview of the dormitory for exchange students and housing arrangement

<NOTES>

Please note that the details of the dormitory are based on the information as of the academic year 2020. The housing arrangement is subject to change in the academic year 2021.

Meiji University arranges 6 dormitories for incoming exchange students to get enrolled in the academic year of 2020. Meiji University makes all decisions regarding dormitory and room assignments.

Considering which campus each student belongs to and the characteristics of each dormitory, Meiji University will decide the housing assignment for each exchange student. (Housing assignment method is subject to change depending on the status of accepting exchange students.)

Applicants for the dormitories of Meiji University must follow any rules of each dormitory set by Meiji University and the management companies.

Dormitory	Sex	Priority School (Faculty)	Monthly Rent (Room rent per month)	Location (the nearest station)	Meal plan
Izumi International House	M/F	School of Law, Commerce, Political Science and Economics, Arts and Literature, Business Administration, Information and Communication, Global Japanese Studies Graduate Schools excluding Science and Technology, Agriculture	75,000 JPY	Meidaimae	No
Komae International House	M/F	School/ Graduate School of Science and Technology, Agriculture	48,000 JPY	Komae	Yes (Application required. Fees for meal are NOT INCLUDED in rent.)
Tokyo Female Students Dormitory	F	School of Law, Commerce, Political Science and Economics, Arts and Literature, Business Administration, Information and Communication School/ Graduate School of Global Japanese Studies, International Program in Architecture of the Graduate School of Science and Technology Graduate Schools excluding Science and Technology, Agriculture	50,000 JPY	Nakano Fujimicho	No
DK HOUSE Tokyo Shinkoiwa	M/F	School of Law, Commerce, Political Science and Economics, Arts and Literature, Business Administration, Information and Communication Graduate Schools excluding Science and Technology, Agriculture School/ Graduate School of Global Japanese Studies	50,000 JPY	Shinkoiwa	No
Uni E'meal Meidaimae Global House	M/F	School of Law, Commerce, Political Science and Economics, Arts and Literature, Business Administration, Information and Communication Graduate Schools excluding Science and Technology, Agriculture, Graduate School of Global Japanese Studies	75,000 JPY	Meidaimae	Yes (Application required. Fees for meal are NOT INCLUDED in rent.)
Meiji Global Village	M/F	School of Law, Commerce, Political Science and Economics, Arts and Literature, Business Administration, Information and Communication, Global Japanese Studies Graduate Schools excluding Science and Technology, Agriculture	70,000 JPY	Meidaimae	Yes (Application required. Fees for meal are NOT INCLUDED in rent.)

【4】 Overview of the dormitory

The overview of each of the six dormitories is as follows. Please note that the numbers and costs listed are subject to change.

(1) Meiji University Izumi International House;

for both female and male students, owned by Meiji University

Izumi International House is owned by Meiji University and was opened in March 2009. It is a dormitory for incoming exchange students and researchers. (It is not used for regular students.) Izumi International House is close to the Meidai-mae station of Keio Line, which gives residents good access to Izumi, Surugadai, and Nakano campus.

- ① **Address** 2-24-14 Izumi, Suginami-ku, Tokyo 168-0063
- ② **Transportation** About 12-minute walk from Meidaimae Station on the Keio Line, Keio Inokashira Line
- ③ **Rooms** 61 single rooms

④ Access to campuses of Meiji University

Campus	Way	Time*	Estimated Fare**
Surugadai	➤ Keio : Meidaimae to Shinjuku ➤ JR: Shinjuku to Ochanomizu	25 min.	JPY6,060
Izumi	➤ On foot	10 min.	N/A
Ikuta	➤ Keio Inokashira : Meidaimae to Shimokitazawa ➤ Odakyu: Shimokitazawa to Ikuta	35 min.	JPY5,320
Nakano	➤ Keio: Meidaimae to Shinjuku ➤ JR: Shinjuku to Nakano	20 min.	JPY4,980

*Time shows approximate minutes to be taken from the nearest station to the dorm to that to each campus

**Fare shows that of monthly commuter pass of the trains listed.

⑤ Facilities

Students' resident area of Meiji University Izumi International House is divided into 9 units (separated by gender), with each unit housing 6–8 exchange students. Each unit has individual dorm rooms and a shared dining area and laundry room. **Kitchen is shared in each unit.**

(1) Interior shared facilities

Entrance hall: Mailboxes, vending machines, public telephones, a tea-ceremony room

(2) Facilities in each unit

(a) Shared facilities

Refrigerator, microwave, toaster, rice cooker, TV, cooking supplies (pot, frying pan, knife, cutting board, etc.); laundry area with coin-operated laundry machine

(b) Each room (one room is assigned to each student in the unit) (14.58 m²)

A bed, bedding, desk and chair, curtains, air conditioner, wired internet access (**Wi-Fi is NOT available**),

and modular bath (bathtub and/or shower, toilet)

(c) Remarks

- Some dorm rooms may not have a bathtub, but all have a shower and toilet.
- The units and rooms are not equipped with any other supplies (dishes, toilet paper, towels, detergent, etc.). You can bring these things with you to Japan or purchase them after arrival.
- If you plan to use the Internet, please bring your own LAN cable. **(Wireless Internet access, Wi-Fi is NOT available.)**

⑥ Rent and charges

- (1) Monthly rent is **JPY75,000**. (Rent for 2020 Academic Year.) It is subject to change in 2021 Academic year. Even if you leave the dorm for a time during an extended break, you will still be charged a rent for whole months. The rent includes an expense of Internet usage.
- (2) Utility expenses (water, electricity, and gas) are charged at cost according to the facility's prepaid system. (JPY 5000 - JPY 10000 /month)
- (3) Use of a laundry machine costs JPY100 per time.

⑦ Regulations

- (1) Resident managers stay in the dormitory.
- (2) Residents do not have a curfew.
- (3) Smoking is prohibited in the dorm (room, balcony and common areas). Smoking is allowed only in outside smoking area.**
- (4) Meiji University decides which units and rooms will be used, and residents may not move to a different room or exchange rooms with other students on their own.
- (5) If you are going to stay out overnight, you need to notify the resident manager of your absence in advance.
- (6) Meiji University may ask residents to move to a different room during their period of stay, depending on the status of accepting international students of each semester.
- (7) Students will not be allowed to move out during their occupancy period.
- (8) Visitors are not allowed to stay overnight at the dorm. They can visit the dorm from 8:00AM to 10:00PM.

⑧ Characteristics

- (1) Only for students, professors and researchers of Meiji University.
- (2) Suitable for those who would like to share a unit with other students.
- (3) No meal plans.

(2) Komae International House;

for both female and male students, owned by a private company, Kyoritsu Maintenance CO., LTD.

Komae International House is owned by a private company named Kyoritsu Maintenance CO., LTD and was opened in March 2011. It is a dormitory only for students of Meiji University. It has 145 single rooms in total with about 141 used for regular students, mainly Japanese, of Meiji University and about 4 for incoming

exchange students. Komae International House is conveniently located near Komae station of Odakyu Line, which gives residents good access to Ikuta campus.

- ① **Address** 1-5-1 Motoizumi, Komae, Tokyo 201-0013
- ② **Transportation** About 2-minute walk from Komae Station on Odakyu Line
- ③ **Rooms** 4 single rooms (145 rooms in total in the residence)

④ **Access to campuses of Meiji University**

Campus	Way	Time*	Estimated Fare**
Surugadai	➤ Odakyu: Komae to Shinjuku	40 min.	JPY7,620
	➤ JR: Shinjuku to Ochanomizu		
Izumi	➤ Odakyu: Komae to Shimokitazawa	25 min.	JPY4,760
	➤ Keio Inokashira: Shimokitazawa to Meidaimae		
Ikuta	➤ Odakyu: Komae to Ikuta	10 min.	JPY2,280
Nakano	➤ Odakyu: Komae to Shinjuku	40 min.	JPY6,540
	➤ JR: Shinjuku to Nakano		

*Time shows approximate minutes to be taken from the nearest station to the dorm to that to each campus.

**Fare shows that of monthly commuter pass of the trains listed.

⑤ **Facility**

Komae International House is an apartment-type dormitory with individual dorm rooms. Most of its floors are divided by gender, while only the first floor is used by both male students and female students. It has laundry room and dining hall in the common areas. **Each individual dorm room has an IH cooking stove and mini-refrigerator.**

(1) Interior shared facility

Entrance hall: Mailboxes, reception area (dorm manager's office), guest room, laundry room, courtyard (smoking area), dining hall (lounge), vending machines

(2) Dorm room facility(17.25 m²)

Bed, bedding, desk and chair, curtains, air conditioner, modular bath (bathtub, shower, toilet), wash stand, IH cooking stove, mini-refrigerator, Internet access (Wi-Fi)

(3) External shared facility

A parking for bicycle

(4) Remarks

- The rooms are not stocked with supplies (dishes, toilet paper, towels, detergent, etc.). You can bring these things with you to Japan or purchase them after arrival.

⑥ **Rent and charges**

- (1) Monthly rent is **JPY48,000**. (Rent for 2020 Academic Year. It is subject to change in 2021 Academic Year.) Even if you leave the dorm for a time during an extended break, you will still be charged a rent for whole month. The rent includes an expense of Internet usage.

- (2) Electricity cost is charged at cost.

- (3) Use of a drying machine costs JPY100 per 30 minutes.
- (4) Building maintenance fee: JPY3,000 as one-time fee due upon move-in
- (5) Meal contract is available as follows
 - Monthly contract for breakfast and dinner: JPY17,100/month
 - Daily contract for breakfast only: JPY385 per time
 - Daily contract for dinner only: JPY715 per time

⑦ Regulations

- (1) A resident manager and housemother serve in Komae International House.
- (2) Residents do not have a curfew.
- (3) Smoking is prohibited in the dorm (room, balcony and common areas). Smoking is allowed only in outside smoking area.**
- (4) If you are going to spend the night outside of the dorm, you need notify the resident manager in advance.
- (5) Access to floors and rooms occupied by opposite gender is not allowed.
- (6) Visitors are not allowed to access to resident area. Their access is limited to a lounge and communal place only.
- (7) Meiji University decides which units and rooms will be used, and residents may not move to a different room or exchange rooms with other students on their own.
- (8) Meiji University may ask residents to move to a different room during their period of stay, depending on the status of accepting international students of each semester.
- (9) Students will not be allowed to move out during their occupancy period.
- (10) Komae International House is not owned by Meiji University, but by a private company, Kyoritsu Maintenance. Please note that students need to follow the regulations set by Kyoritsu Maintenance CO., LTD.**

⑧ Characteristics

- (1) Only for students of Meiji University (both Japanese and international students).
- (2) Suitable for those who would like to stay in apartment-type residence.
- (3) Suitable for those who would prefer to study or work on their research in a quiet environment, or those who would like to have more private space.
- (4) Dormitory that has meal plans.

⑨ Information materials

- (1) URL: Komae International House by Kyoritsu Maintenance CO., LTD
(Written in Japanese only) <https://meijiglobalvillage.com/dormitory/>

(3) Tokyo Female Students Dormitory;

for female students only, owned by a private company, Fujiland CO., LTD.

Tokyo Female Students Dormitory (main building) was opened in April 2014. A private company, Fujiland CO., LTD, owns the property with 230 single rooms for students of its neighborhood schools. The dormitory has the best access

to Nakano campus.

① **Address** 1-9-19, Wada, Suginami, Tokyo 166-0012

② **Transportation** About 6-minute walk from Nakano Fujimicho station on Tokyo Metro Marunouchi Line

③ **Access to campuses of Meiji University**

Campus	Way	Time*	Estimated Fare**
Surugadai	➤ Marunouchi: Nakano Fujimicho to Shinjuku ➤ JR: Shinjuku to Ochanomizu	30 min.	JPY7,520
Izumi	➤ Marunouchi: Nakano Fujimicho to Shinjuku ➤ Keio: Shinjuku to Meidaimae	25 min.	JPY5,540
Ikuta	➤ Marunouchi: Nakano Fujimicho to Shinjuku ➤ Odakyu: Shnjuku to Ikuta	55 min.	JPY7,600
Nakano	➤ Marunouchi: Nakano Fujimicho to Shinjuku ➤ JR: Shinjuku to Nakano	25 min.	JPY6,440
	➤ Bus: The nearest stop to Nakano station	20 min.	JPY9,390

*Time shows approximate minutes to be taken from the nearest station to the dorm to that to each campus.

**Fare shows that of monthly commuter pass of the trains listed.

④ **Facility**

Most of the rooms in Tokyo Female Students Dormitory are unit-type rooms. Each unit is shared by 6 students, with individual bedrooms and a dining space named "Share Dining Room." **Kitchen is shared in each unit.**

(1) Interior common facility

Lobby, lounge, shared shower room, laundry machine, toilet, training room, common kitchen.

(2) Facility in rooms and Shared Dining Room

(a) Rooms(7.4~10.6 m²) (for all rooms)

Bed, bedding, desk and chair, curtains, air conditioner, Internet access

(b) Shared Dining Room (for a 6-room-unit)

IH cooking stove, refrigerator, microwave, rice cooker, dining table and chairs, air conditioner, , lighting equipment, TV, Wi-Fi

(3) Remarks

- The rooms are not stocked with supplies (dishes, toilet paper, towels, detergent, etc.). You can bring these things with you to Japan or purchase them after arrival.
- If you plan to use the Internet in your room, please bring your own LAN cable. (Wireless Internet access is not available.)

⑤ Rent and charges

- (1) Monthly rent is **JPY50,000**. (Rent for 2020 Academic Year. It is subject to change in 2021 Academic Year.) Even if you leave the dorm for a time during an extended break, you will still be charged a rent for whole month. The rent includes an expense of Internet usage.
- (2) Utility expenses (water, electricity, and gas) are included in rent.
- (3) Use of a laundry machine costs JPY200, drying machine costs JPY100 per time

⑥ Regulations

- (1) Resident managers serve in the dormitory.
- (2) **Residents have a curfew.**
The curfew is 0:00AM. The dormitory is open from 6:00AM to 0:00AM.
- (3) **Drinking of alcohol is prohibited in the dorm.**
- (4) **Smoking is prohibited in the dorm (room, balcony and common areas). Smoking area is not offered.**
- (5) Access of visitors is limited to lobby and lounge on the 1st floor. Male visitors are not allowed to enter the dormitory except for parents.
- (6) Meiji University decides which units and rooms will be used, and residents may not move to a different room or exchange rooms with other students on their own.
- (7) Meiji University may ask residents to move to a different room during their period of stay, depending on the status of accepting international students of each semester.
- (8) Students will not be allowed to move out during their occupancy period.
- (9) Tokyo Female Students Dormitory is not owned by Meiji University, but by a private company, Fujiland CO., LTD. Please note that students need to follow the regulations set by Fujiland CO., LTD.

⑦ Characteristics

- (1) For students both of Meiji University and of other schools (both Japanese and international students.
- (2) Suitable for those who would like to share a unit with other students.
- (3) No meal plan.
- (4) Female students only.

⑧ Information materials

- (1) URL: Tokyo Female Students Dormitory by Fujiland CO., LTD

(Written in Japanese only) http://joshikaikan.jp/?page_id=6&no=1

<http://www.panorama-fukuoka.net/naviplus/rme/rme0253/index.html>

*The rent on the website is not applicable for exchange students of Meiji University.

(4) DK HOUSE Tokyo Shinkoiwa;

for both female and male students, owned by a private company, Daiichi-Kousan CO., LTD.

DK HOUSE Tokyo Shinkoiwa is owned by a private company named Daiichi-Kousan CO., LTD. It has 163 rooms in total used for Japanese and international students and office workers of neighborhood schools and companies. DK HOUSE Tokyo Shinkoiwa is located near Shinkoiwa station of JR Sobu Line, which gives residents good access to Surugadai campus.

① **Address** 4-4-5 Shinkoiwa, Katsushika-ku, Tokyo, 124-0024

② **Transportation** About 8-minute walk from Shinkoiwa Station on JR Sobu Line

③ Access to campuses of Meiji University

Campus	How to get to each campus	Time*	Estimated Fare**
Surugadai	➤ JR: Shinkoiwa to Ochanomizu	18 min.	JPY4,400
Izumi	➤ JR: Shinkoiwa to Shinjuku	45 min.	JPY9,230
	➤ Keio: Shinjuku to Meidaimae		
Ikuta	➤ JR: Shinkoiwa to Shinjuku	1hour and 10 min.	JPY11,290
	➤ Odakyu: Shinjuku - Seijogakuen Mae - Ikuta		
Nakano	➤ JR: Shinkoiwa – Ochanomizu – Nakano	35 min.	JPY7,710

*Time shows approximate time from the nearest station of the dorm to that of each campus.

**Fare shows that of monthly student commuter pass of the routes listed.

④ Facility

DK HOUSE Tokyo Shinkoiwa is an apartment-type dormitory with individual dorm rooms and common areas.

Kitchen is shared.

(1) Shared facility

Living room, Dining room, Kitchen (including cooking tools, dishes and microwave oven), IH cooking stove, TV, PC, conversation room, bathroom, shower room, laundry room, iron, multipurpose room, parking area for bicycles*, vending machine, elevator, playroom (billiards and darts)

*JPY500/month (without tax) (need to pay in a lump sum for 6 months)

(2) Dorm room facility (7.6 m²)

Bed, bedding, desk and chair, curtains, closet, air conditioner, Internet access*, refrigerator, garbage box

*Wireless LAN is available at the conversation room and the 1st floor.

(3) Remarks

- The rooms are not equipped with supplies (towels, detergent, etc.). You can bring these things with you to Japan or purchase them after arrival.

⑤ Rent and charges

(1) Monthly rent is **JPY50,000**. (Rent for 2020 Academic Year. It is subject to change in 2021 Academic Year.) Even if you leave the dorm for a while during an extended break, the rent will still be charged for the whole months. The rent includes the Internet connection fees.

(2) Electricity expenses are charged at cost partially.

(3) Use of a laundry machine costs JPY 200 per time, and use of drying machine costs JPY100 per 20 minutes.

⑥ Regulations

- (1) A resident manager serves in DK HOUSE Tokyo Shinkoiwa.
- (2) Residents do not have a curfew.
- (3) **Smoking is prohibited in the dorm (room, balcony and common areas). Smoking area is not offered.**
- (4) Meiji University decides which rooms will be used, and residents may not move to a different room or exchange rooms with other students on their own.
- (5) If you are going to stay out more than 1week, you need to notify the resident manager of your absence in advance.
- (6) Meiji University may ask residents to move to a different room during their period of stay, depending on the status of accepting international students of each semester.
- (7) Students will not be allowed to move out during their occupancy period.
- (8) Families of resident can stay overnight at the dorm, and friends of resident can visit designated area of dorm in designated hours.
- (9) **DK HOUSE-SHINKOIWA is not owned by Meiji University, but by a private company, Daiichi-Kousan CO., LTD. Please note that students need to follow the regulations set by Daiichi-Kousan CO., LTD.**

⑦ Characteristics

- (1) For students both of Meiji University and of other schools (Japanese / international students) and office workers.
- (2) No meal plan.
- (3) Suitable for those who would like to have private space and interact with many people.
- (4) Along the railroad and close to a street where many restaurants are located.*
*Depending on the room, you may hear the sounds of trains.

⑧ Information materials

URL: Daiichi-Kousan CO., LTD.

(Japanese) <http://e-guesthouse.com/tokyo/>

(English) <http://www.e-guesthouse.com/eng/tokyo/room.php>

*The boarding fee on the website is not applicable for exchange students of Meiji University.

(5) Uni E'meal Meidaimae Global House;

for both female and male students, owned by a private company, J.S.B. Network CO., LTD.

Uni E'meal Meidaimae Global House is owned by a private company named J.S.B. Network CO., LTD. It has 80 rooms in total used for Japanese and international students and about 1 for incoming exchange students of Meiji University. Uni E'meal Meidaimae Global House is located near Meidaimae station of Keio Line, Keio Inokashira Line, and Eihukucho Station of Keio Inokashira Line, which gives residents good access to Izumi and Nakano campus.

- ① **Address** 1-7-43 Eihuku, Suginami-ku, Tokyo, 168-0064
- ② **Transportation** About 12-minute walk from Meidaimae Station on Keio Line, Keio Inokashira Line
About 9-minute walk from Eifukucho Station on Keio Inokashira Line
About 11-minute walk from Shimotakaido Station on Keio Line, Tokyu Setagaya Line
- ③ **Rooms for exchange students** 1 single room (80 rooms in total in the residence)

④ Access to campuses of Meiji University

Campus	How to get to each campus	Time*	Estimated Fare**
Surugadai	➤ Keio: Meidaimae to Shinjuku ➤ JR: Shinjuku to Ochanomizu	25 min.	JPY6,060
Izumi	➤ On foot	5 min.	N/A
Ikuta	➤ Keio Inokashira : Meidaimae to Shimokitazawa ➤ Odakyu : Shimokitazawa to Ikuta	30 min.	JPY5,320
Nakano	➤ Keio: Meidaimae to Shinjuku ➤ JR: Shinjuku to Nakano	20 min.	JPY4,980

*Time shows approximate time from the nearest station of the dorm to that of each campus.

**Fare shows that of monthly student commuter pass of the routes listed.

⑤ Facility

Uni E'meal Meidaimae Global House has 80 private rooms and common facilities including dining room. **Each individual dorm room has an IH cooking stove, refrigerator, and microwave.**

(1) Shared facility

Cable television, parking area for cars* and bicycles, delivery box, dining room, security camera

*a separate contract is required.

(2) Dorm room facility (21.3 m²)

intercom, separated bath and toilet, lighting equipment, IH cooking stove, refrigerator, microwave, mini table, chair, desk&drawer unit, Television racks, closet, bed, bedding, storage space, shoe box, balcony, and internet(cabled wired)

(3) Remarks

➤ The rooms are not equipped with supplies (dishes, toilet paper, towels, detergent, etc.). You can bring

these things with you to Japan or purchase them after arrival.

⑥ Rent and charges

- (1) Monthly rent is **JPY75,000**. (Rent for 2020 Academic Year. It is subject to change in 2021 Academic year.) Even if you leave the dorm for a while during an extended break, the rent will still be charged for the whole months. The rent includes the Internet connection fees.
- (2) Utility expenses (water, electricity, and gas) are charged at cost.
- (3) Meal contract for breakfast and dinner: JPY 12,000/month

⑦ Regulations

- (1) A resident manager serves in Uni E'meal Meidaimae Global House.
- (2) Residents do not have a curfew.
- (3) Smoking is prohibited in the dorm (room, balcony and common areas). Smoking area is not offered.**
- (4) Meiji University decides which rooms will be used, and residents may not move to a different room or exchange rooms with other students on their own.
- (5) Meiji University may ask residents to move to a different room during their period of stay, depending on the status of accepting international students of each semester.
- (6) Students will not be allowed to move out during their occupancy period.
- (7) Uni E'meal Meidaimae Global House is not owned by Meiji University, but by a private company, J.S.B. Network CO., LTD. Please note that students need to follow the regulations set by J.S.B. Network CO., LTD.**

⑧ Characteristics

- (1) Only for students of Meiji University (both Japanese and international students).
- (2) Suitable for those who would like to have private space and interact with many people
- (3) Dorm providing breakfast and dinner to its residents. Meal plan is optional.
Not suitable for those who prefer vegetarian menu or anti-allergic menu.

⑨ Information materials

URL: Uni E'meal Meidaimae Global House by JSB Network CO., LTD

(Written in Japanese only)

http://unilife.co.jp/area/area_kanto/unietoile_meidaimae/?utm_campaign=unietoile_meidaimae&utm_source=meiji.ac.jp&utm_medium=banner

(6)Meiji Global Village;

for both women and men

Meiji Global Village is by owned by a private company named Kyoritsu Maintenance Co., Ltd. It is a dormitory only for students of Meiji University and will open in March 2019. It has 216 single rooms in total with about 116 used for regular students of Meiji University and about 100 for incoming exchange students. Meiji Global Village is conveniently located in Izumi campus, which gives residents good access to Izumi, Surugadai, and Nakano campus.

- ① **Address** 1-11-1 Eihuku, Suginami-ku, Tokyo 168-0064
- ② **Transportation** About 12-minute walk from Meidaimae Station on the Keio Line, Keio Inokashira Line
- ③ **Rooms** 100 single rooms (216 rooms in total in the residence)
- ④ **Access to campuses of Meiji University**

Campus	Way	Time*	Estimated Fare**
Surugadai	➤ Keio : Meidaimae to Shinjuku	25 min.	JPY6,060
	➤ JR: Shinjuku to Ochanomizu		
Izumi	➤ On foot	5 min.	N/A
Ikuta	➤ Keio Inokashira : Meidaimae to Shimokitazawa	35 min.	JPY5,320
	➤ Odakyu: Shimokitazawa to Ikuta		
Nakano	➤ Keio: Meidaimae to Shinjuku	20 min.	JPY4,980
	➤ JR: Shinjuku to Nakano		

*Time shows approximate minutes to be taken from the nearest station to the dorm to that to each campus.

**Fare shows that of monthly commuter pass of the trains listed.

⑤ Facilities

Students' resident area of Meiji Global Village is divided into 36 units (separated by gender), with each unit housing 6 students, both exchange students and regular students. Each unit has individual dorm rooms and a shared dining area and laundry room. **Kitchen is equipped in the common area at each floor and shared.**

(1) Interior shared facilities

Entrance hall: Mailboxes, vending machines, play room, study space, resident assistant's room, prayer room, restaurant, living room, communal kitchen, music room, guest room, public bath, infirmary, multipurpose lounge, parking area for bicycles, smoking area

(2) Facilities in each unit

(a) Shared facilities

Shared shower room, toilet, laundry machine, washstand, small sink*, shared living room

*Cooking is prohibited in each unit. (Students are able to cook in a kitchen equipped in the common area at each floor.)

(b) Each room (one room is assigned to each student in the unit) (Subject to change)

A bed, bedding, desk and chair, curtains, air conditioner, refrigerator, closet, bookshelf, lighting equipment, internet (Wi-Fi)

⑥ Rent and charges

(1) Monthly rent is **JPY70,000**. (Rent for 2020 Academic Year. It is subject to change in 2021 Academic year.) Even

if you leave the dorm for a time during an extended break, you will still be charged a rent for whole months.
The rent includes an expense of Utility expenses (water, electricity, and gas) and Internet usage.

- (2) The rooms are not stocked with supplies (dishes, towels, detergent, etc.). You can bring these things with you to Japan or purchase them after arrival.
- (3) Use of a drying machine costs JPY100 per 30 minutes.
- (4) Meal contract is available as follows (Cost for 2020 Academic Year. It is subject to change in 2021 Academic year.)
 - Monthly contract for breakfast and dinner: JPY17,100/month
 - Daily contract for breakfast only: JPY385 per time
 - Daily contract for dinner only: JPY715 per time

⑦ Regulations

- (1) Resident managers stay in the dormitory.
- (2) Residents do not have a curfew.
- (3) Drinking of alcohol is prohibited in the dorm.**
- (4) Smoking is prohibited in the dorm (room, balcony and common areas). Smoking is allowed only in outside smoking area.**
- (5) Access to building and rooms occupied by opposite gender is not allowed.
- (6) Visitors whom you notified the resident manager in advance are not allowed to access to resident area (a part of first floor and upper than second floor). Their access is limited to a lounge and communal place on the first floor only.
- (7) Meiji University decides which units and rooms will be used, and residents may not move to a different room or exchange rooms with other students on their own.
- (8) If you are going to stay out overnight, you need to notify the resident manager of your absence in advance.
- (9) Meiji University may ask residents to move to a different room during their period of stay, depending on the status of accepting international students of each semester.
- (10) Students will not be allowed to move out during their occupancy period.
- (11) Meiji Global Village is not owned by Meiji University, but by a private company, Kyoritsu Maintenance.**
Please note that students need to follow the regulations set by Kyoritsu Maintenance CO., LTD..

⑧ Characteristics

- (1) Only for students (Japanese and incoming exchange students) of Meiji University.
- (2) Suitable for those who would like to share a unit with other students.
- (3) Dormitory that has meal plans.

⑨ Information materials *The fee on the website is not applicable for exchange students of Meiji University.

URL: Meiji Global Village by Kyoritsu Maintenance CO., LTD

English: <https://meijiglobalvillage.com/en/mgv/> Japanese: <https://meijiglobalvillage.com/mgv/>

Photos of the dormitories 施設の写真

※写真はあくまでも一例です。／The facility conditions are subject to change.

1. Izumi International House 和泉インターナショナルハウス

Exterior of the building 外観



Entrance 入口



Shared dining room in a unit ユニット内ダイニング Single room 居室



2. Komae International House 狛江インターナショナルハウス

Exterior of the building 外観



Common dining hall 食堂



Single room 居室



3. Tokyo Female Students Dormitory 東京女子学生会館

Exterior of the building 外観



Lounge ラウンジ



Shared dining room in a unit シェアダイニングルーム Single room 居室



4. DK HOUSE-SHINKOIWA DK ハウス 東京・新小岩

Exterior of the building 外観



Courtyard 中庭



Single room 居室



Kitchen 台所



5. Uni E'meal Meidaimae Global House UniE'meal 明大前グローバルハウス

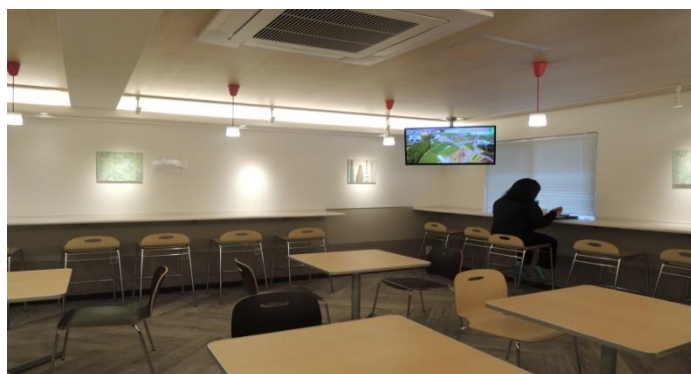
Exterior of the building 外観



Entrance Lobby エントランスロビー



Common dining hall 食堂

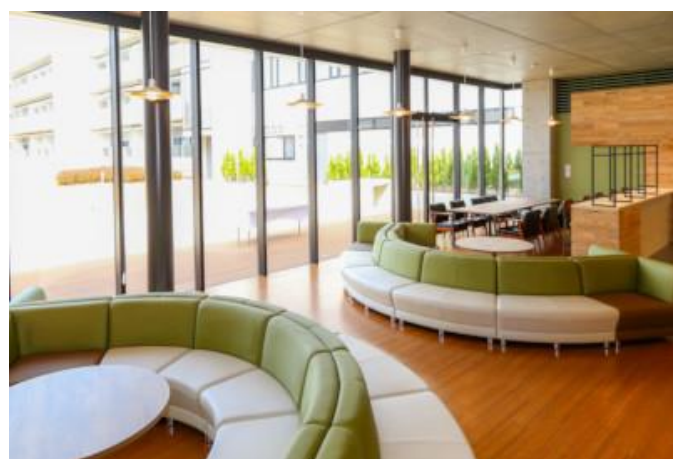
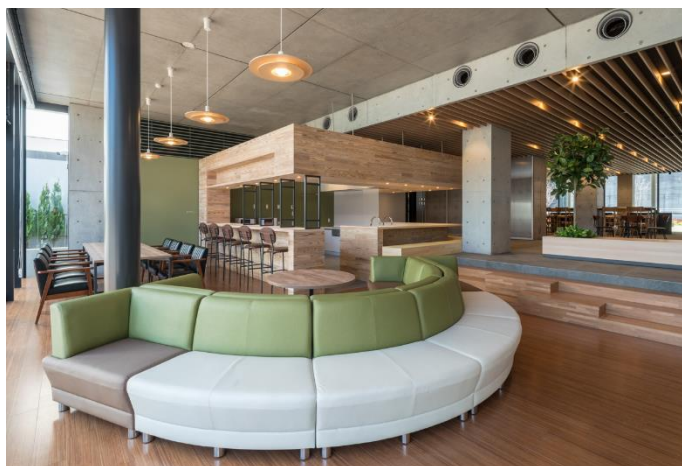


6. Meiji Global Village 明治大学グローバル・ヴィレッジ

Exterior of the building 外観



Common living room 共有リビング



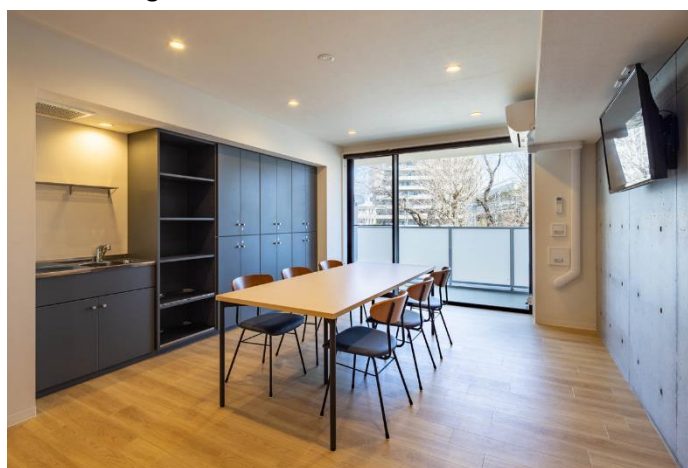
Shared kitchen 共有キッチン



Common dining hall 食堂



Shared living room in a unit ユニット内共有リビング



Single room 居室



4. Academic Calendar

The academic calendar is subject to change.

Event	Date
Exchange students arrive in Japan and enter a dorm for April enrollment	Week of Mar. 15, 2021
Orientation for Exchange students	Late Mar. 2021
Spring semester begins	Apr. 1, 2021
Spring semester exams	Jul.15 to Jul.22, 2021
Spring semester ends	Jul.31, 2021
Summer break	Aug. 1 through Sep. 19, 2021
Exchange students arrive in Japan and enter a dorm for September enrollment	Week of 1 st Sep. 2021
Orientation for Exchange students	Early Sep. 2021
Fall semester begins	Sep. 20, 2021
Winter break	Dec. 25, 2021 to Jan.7, 2022
Fall semester exams	Jan. 24 to Feb. 3, 2022
Fall semester ends	Feb. 3, 2022
Spring break	Feb. 4 through Mar. 31, 2022
Spring semester,2022 begins	Apr. 1, 2022

5. Scholarship

The details of the Japan Association Student Service Organization (JASSO) Short Term Study Scholarship for 2021 have not yet been announced. Meiji University will inform the Exchange Program Coordinator as soon as the application details are released. Please note that NOT all applicants can receive this scholarship and is highly competitive. Meiji University does not offer any other scholarship for exchange students to study at Meiji University other than the JASSO Short Term Study Scholarship.

6. Class, Japanese-language classes

(1) Class

There may be restrictions on the classes a student may take based on their Japanese proficiency level. Students having skills equivalent to the N1 level of the Japanese Language Proficiency Test can take regular classes in their major. Students having the skills equivalent to the N2 level or lower may have to take Japanese-language classes.

(2) Japanese-language classes for undergraduate and graduate exchange students (excluding students in the school of Global Japanese Studies).

Japanese-language class level is decided according to the placement test held at Meiji University and is not ascertained before arrival. Japanese-language class varies according to Japanese language proficiency.

Introductory, beginners and students with skills equivalent to level N5-N2 of JLPT (the Japanese Language Proficiency Test)	<p>Japanese 1-8 are offered by Japanese Language Programs for International Students.</p> <p><u>Course outlines</u> https://www.meiji.ac.jp/cip/student_support/japanese/jmenu.html</p> <p><u>Syllabus</u> https://www.meiji.ac.jp/cip/student_support/japanese/6t5h7p00000tklct-att/6t5h7p00000tklha.pdf</p>
Students with skills equivalent to level N1 of JLPT	<p>Japanese (Advanced) is offered by Japanese Language Programs for International Students. Also, Japanese language classes and Japanese Culture & Society offered by each undergraduate school are available.</p> <p><u>Course outlines</u> https://www.meiji.ac.jp/cip/international/jlec.html</p> <p><u>Syllabus</u> https://www.meiji.ac.jp/cip/student_support/japanese/6t5h7p00000tklct-att/6t5h7p00000tklyn.pdf</p>

*Credits are not offered for graduate exchange students who have completed the Japanese language classes. The certificates of completion is issued to the students who have successfully completed the class. Japanese language classes and Japanese Culture & Society offered by each undergraduate school are not available.

* Students in the school of Global Japanese Studies are able to take Japanese language classes offered by the school of Global Japanese Studies. Japanese language classes listed above are not available. Please refer to below (3).

* Course availability is subject to change.

(3) Japanese-language classes for students in the school of Global Japanese Studies

Students in the School of Global Japanese Studies (SGJS) can register Japanese classes offered by SGJS at Nakano Campus. SGJS students cannot take Japanese classes in the Japanese Language Program.

The class level of Japanese language courses will decided according to the Japanese Language Placement Test. SGJS will conduct the test after students arrive in Japan, and the course level will not be confirmed before until after this test. The Japanese language class a student can take depends on their Japanese proficiency level evaluation.

For further information on Japanese language classes, please see p.29, “For SGJS students (except for English track).”
If you are applying to the English track, please refer to p.35.

Introductory, beginners and students with Japanese proficiency equivalent to JLPT N5-N2 level	Students in this range will be able to register “Introductory Japanese” to “Pre-advanced Japanese” courses offered by SGJS.
Students who passed JLPT N1 level	Students who passed JLPT N1 can register “Advance Japanese” for International students offered by SGJS. These students can also register “Japanese Expression”, “Integrated Japanese” and “Introduction to Advanced Academic Japanese” designed to enhance their Japanese quality. Please note students are required to submit a copy of their JLPT N1 level certificate.

7. Exams, Grades and Academic Transcripts

(1) Exams

As a rule, first-semester exams are held in late July while second-semester exams are held in late January. Grades are generally announced every semester. There are five possible grades: S (90 points or higher), A (80 to 89 points), B (70 to 79 points), C (60 to 69 points), F (59 points or lower: Fail). A grade of C or better is required to earn credits from a course.

Note: Methods for evaluating student grades differ by school/graduate school.

(2) Academic Transcripts

After you complete your term of study, one (1) copy of your transcript in English will be sent to your home university.

Study-Abroad Term Ends	Transcript Issuance Period	Notes
July 2021	<u>Mid-October 2021 or later</u>	Transcript insurances period is subject to change without notice and depends on the time it takes to process grades and other circumstances.
February 2022	<u>End-April 2022 or later</u>	

*In principle, our office cannot send the official transcripts before the transcript issuance period.

8. Living Expenses

(1) Living Expenses in Tokyo

Tokyo is known around the world as being one of the most expensive places to live. The average monthly expenses of an exchange student are listed below. Do your own research, and be sure you have the funds necessary to cover your expenses.

Rent (Ex: Izumi International House)	¥75,000 or more
Transportation	About ¥10,000-¥20,000
Meals	About ¥30,000 or more
Utilities (electricity, gas, water)	About ¥10,000
Phone	About ¥6,000
Total	About ¥131,000 or more

Notes:

- According to the Japan Student Services Organization, monthly living expenses in Tokyo are generally estimated to be about ¥150,000.
- If you are going to be moving into a new place, keep in mind that you will also have to buy new furnishings and other supplies. You will also have to pay rent and a deposit, and in most cases, other fees such as key money (remuneration paid to a landlord) and agency fees are also required.

(2) Costs during stay in Japan

You should be prepared to pay the following costs during stay in Japan:

Student health insurance Mandatory for all exchange students	¥3,000 (one-time payment upon arrival)
National Health Insurance Mandatory for all exchange students	About ¥15,000/year
Daily necessities	About ¥30,000
Books (textbooks)	About ¥5,000

9. Curriculum, List of faculty members, Syllabus

Undergraduate Schools which Offer Classes in Japanese

School of Global Japanese Studies (except for English track)		location	Nakano Campus
URL	https://www.meiji.ac.jp/cip/english/undergraduate/nippon/index.html		
Curriculum	https://www.meiji.ac.jp/cip/english/undergraduate/nippon/Japanesetrack/chart.html <Notes> ●The subjects marked with "○" in the curriculum chart are required courses for regular students of Meiji University. Exchange students cannot take required courses for regular students except Japanese-language courses. ●The School of Global Japanese Studies (SGJS) only offers Japanese-language classes for English Track Students and Exchange students in the SGJS. The class level is decided according to the placement test held by SGJS and cannot be decided before arrival. Syllabus: https://www.meiji.ac.jp/nippon/office-info/6t5h7p00000e66ny-att/6t5h7p000033rz44.pdf < Intermediate Level (equivalent to JLPT N3 level)> Intermediate Japanese (General), Intermediate Japanese (Vocabulary & Kanji) < Upper-intermediate Level (equivalent to first half of JLPT N2 level)> Upper-intermediate Japanese (General), Upper-intermediate Japanese (Vocabulary & Kanji), JLPT Preparation (Intermediate) < Pre-advanced Japanese Level (equivalent to JLPT N2 level)> Pre-advanced Japanese (General), Pre-advanced Japanese (Vocabulary & Kanji) JLPT Preparation (Advanced) < Advanced Level (JLPT N1 level)> Advanced Japanese (Reading) I / II, Advanced Japanese (Listening) I / II, Advanced Japanese (Writing) I / II, Advanced Japanese (Speaking) I / II < Upper-advanced Level (JLPT N1 level)> Japanese Expression (Writing), Japanese Expression (Speaking), Integrated Japanese A/B, Introduction to Advanced Academic Japanese A/B *Japanese Language Programs for International Students in Surugadai campus are not available for students in the School of Global Japanese Studies.		
List of faculty members	https://www.meiji.ac.jp/cip/english/undergraduate/nippon/faculty.html		
Syllabus	https://www.meiji.ac.jp/nippon/office-info/6t5h7p00000e66ny.html		

Undergraduate Schools which Offer Classes in Japanese

School of Law		locations	Surugadai Campus and Izumi Campus
URL	https://www.meiji.ac.jp/hogaku/index.html		
Curriculum	https://www.meiji.ac.jp/hogaku/curriculum/index.html		
List of faculty members	https://www.meiji.ac.jp/hogaku/teacher/index.html		
Syllabus	https://www.meiji.ac.jp/hogaku/office_info/6t5h7p00000ejaq1.html		

School of Commerce		locations	Surugadai Campus and Izumi Campus
URL	https://www.meiji.ac.jp/shogaku/index.html		
Curriculum	https://www.meiji.ac.jp/shogaku/outline/curriculum.html		
List of faculty members	https://www.meiji.ac.jp/shogaku/teacher/index.html		
Syllabus	https://www.meiji.ac.jp/shogaku/6t5h7p00000h7gec.html		

School of Political Science and Economics		locations	Surugadai Campus and Izumi Campus
URL	https://www.meiji.ac.jp/seikei/index.html		
Curriculum	https://www.meiji.ac.jp/seikei/outline/curriculum-zu.html		
List of faculty members	https://www.meiji.ac.jp/seikei/faculty/01/index.html		
Syllabus	https://www.meiji.ac.jp/seikei/student/syllabus.html		

School of Arts and Letters		locations	Surugadai Campus and Izumi Campus
URL	https://www.meiji.ac.jp/bungaku/index.html		
Curriculum	https://www.meiji.ac.jp/bungaku/tokusyoku/curriculum.html For details, please refer to the website for each course.		
List of faculty members	https://www.meiji.ac.jp/bungaku/teachingstaff/index.html		
Syllabus	https://www.meiji.ac.jp/bungaku/jikanwari.html		

School of Science and Technology		locations	Surugadai Campus and Izumi Campus
URL	https://www.meiji.ac.jp/sst/index.html		
Curriculum	https://www.meiji.ac.jp/sst/curriculum/kamoku.html For details, please refer to the website for each course.		
List of faculty members	https://www.meiji.ac.jp/sst/teacherlist/index.html		
Syllabus	https://www.meiji.ac.jp/sst/zimushitsu/syllabus.html		

Undergraduate Schools which Offer Classes in Japanese

School of Agriculture		location	Ikuta Campus
URL	https://www.meiji.ac.jp/agri/index.html		
Curriculum	https://www.meiji.ac.jp/agri/outline/curriculum.html For details, please refer to the website for each course.		
List of faculty members	https://www.meiji.ac.jp/agri/laboratory/index.html		
Syllabus	https://www.meiji.ac.jp/agri/student/6t5h7p00000gpn31.html		

School of Business Administration		locations	Surugadai Campus and Izumi Campus
URL	https://www.meiji.ac.jp/keiei/index.html		
Curriculum	https://www.meiji.ac.jp/keiei/curriculum/subject.html		
List of faculty members	https://www.meiji.ac.jp/keiei/faculty/01/index.html https://www.meiji.ac.jp/keiei/faculty/02/index.html https://www.meiji.ac.jp/keiei/faculty/03/index.html https://www.meiji.ac.jp/keiei/faculty/04/index.html		
Syllabus	https://www.meiji.ac.jp/keiei/curriculum/subject.html		

School of Information and Communication		locations	Surugadai Campus and Izumi Campus
URL	https://www.meiji.ac.jp/infocom/index.html		
Curriculum	https://www.meiji.ac.jp/infocom/curriculum/syllabus2017.html		
List of faculty members	https://www.meiji.ac.jp/infocom/teacher/index.html		
Syllabus	https://www.meiji.ac.jp/infocom/office/6t5h7p00000kqg6g.html		

School of Interdisciplinary Mathematical Sciences		location	Nakano Campus
URL	https://www.meiji.ac.jp/ims/		
Curriculum	https://www.meiji.ac.jp/ims/subject/msbma/curriculum.html https://www.meiji.ac.jp/ims/subject/fms/curriculum.html https://www.meiji.ac.jp/ims/subject/nd/curriculum.html		
List of faculty members	https://www.meiji.ac.jp/ims/faculty/msbma.html https://www.meiji.ac.jp/ims/faculty/fms.html https://www.meiji.ac.jp/ims/faculty/nd.html		
Syllabus	https://www.meiji.ac.jp/ims/syllabus/index.html		

Graduate Schools which Offer Classes in Japanese

Graduate School of Law		location	Surugadai Campus
URL	https://www.meiji.ac.jp/dai_in/law/index.html		
Curriculum	https://www.meiji.ac.jp/dai_in/law/syllabus.html		
List of faculty members	https://www.meiji.ac.jp/dai_in/law/faculty/01/index.html https://www.meiji.ac.jp/dai_in/law/faculty/02/index.html		
Syllabus	https://www.meiji.ac.jp/dai_in/law/syllabus.html		

Graduate School of Commerce		location	Surugadai Campus
URL	https://www.meiji.ac.jp/dai_in/commerce/index.html		
Curriculum	https://www.meiji.ac.jp/dai_in/commerce/curriculum/curriculum-commerce.html		
List of faculty members	https://www.meiji.ac.jp/dai_in/commerce/index.html		
Syllabus	https://www.meiji.ac.jp/dai_in/commerce/syllabus.html https://oh-o2.meiji.ac.jp/portal/index Language : English, Click “Guest Login” and “Search”		

Graduate School of Political Science and Economics		location	Surugadai Campus
URL	https://www.meiji.ac.jp/dai_in/political_science-economics/index.html		
Curriculum	https://www.meiji.ac.jp/dai_in/political_science-economics/curriculum/curriculum-political-science-and-economics.html		
List of faculty members	https://www.meiji.ac.jp/dai_in/political_science-economics/faculty/01/index.html https://www.meiji.ac.jp/dai_in/political_science-economics/faculty/02/index.html		
Syllabus	https://www.meiji.ac.jp/dai_in/political_science-economics/syllabus.html https://oh-o2.meiji.ac.jp/portal/index Language : English, Click “Guest Login” and “Search”		

Graduate School of Business Administration		location	Surugadai Campus
URL	https://www.meiji.ac.jp/dai_in/business_administration/index.html		
Curriculum	https://www.meiji.ac.jp/dai_in/business_administration/curriculum/curriculum-business-administration.html		
List of faculty members	https://www.meiji.ac.jp/dai_in/business_administration/index.html		
Syllabus	https://www.meiji.ac.jp/dai_in/business_administration/syllabus.html		

Graduate Schools which Offer Classes in Japanese

Graduate School of Arts and Letters		location	Surugadai Campus
URL	https://www.meiji.ac.jp/dai_in/arts-letters/index.html		
Curriculum	https://www.meiji.ac.jp/dai_in/arts-letters/curriculum/new_of_curriculum-arts-and-letters.html		
List of faculty members	https://www.meiji.ac.jp/dai_in/arts-letters/index.html		
Syllabus	https://oh-o2.meiji.ac.jp/portal/index Language : English, Click “Guest Login” and “Search”		

Graduate School of Science and Technology (other than those applying to the International Program in Architecture and Urban Design)		location	Ikuta Campus
URL	https://www.meiji.ac.jp/sst/grad/index.html		
Curriculum	https://www.meiji.ac.jp/sst/grad/syllabus/index.html		
List of faculty members	https://www.meiji.ac.jp/sst/grad/index.html		
Syllabus	https://www.meiji.ac.jp/sst/grad/syllabus/index.html		

Graduate School of Agriculture		location	Ikuta Campus
URL	https://www.meiji.ac.jp/agri/daigakuin/nouken-top.html		
Curriculum	https://www.meiji.ac.jp/agri/daigakuin/curriculum-agriculture.html		
List of faculty members	https://www.meiji.ac.jp/agri/daigakuin/nouken-top.html		
Syllabus	https://www.meiji.ac.jp/agri/daigakuin/syllabus.html https://oh-o2.meiji.ac.jp/portal/index Language : English, Click “Guest Login” and “Search”		

Graduate School of Information and Communication		location	Surugadai Campus
URL	https://www.meiji.ac.jp/dai_in/infocom/index.html		
Curriculum	https://www.meiji.ac.jp/dai_in/infocom/curriculum/curriculum-information-and-communication.html		
List of faculty members	https://www.meiji.ac.jp/dai_in/infocom/index.html		
Syllabus	https://www.meiji.ac.jp/dai_in/infocom/syllabus.html		

Graduate School of Humanities		location	Izumi Campus
URL	https://www.meiji.ac.jp/humanity/index.html		
Curriculum	https://www.meiji.ac.jp/humanity/curriculum/curriculum-humanities.html		
List of faculty members	https://www.meiji.ac.jp/humanity/index.html		
Syllabus	https://www.meiji.ac.jp/humanity/syllabus.html		

Graduate Schools which Offer Classes in Japanese

Graduate School of Advanced Mathematical Sciences		location	Nakano Campus
URL	https://www.meiji.ac.jp/ams/index.html		
Curriculum	https://www.meiji.ac.jp/ams/curriculum/model.html		
List of faculty members	https://www.meiji.ac.jp/ams/professor/01/index.html		
Syllabus	https://www.meiji.ac.jp/ams/syllabus.html		

Graduate School of Global Japanese Studies		location	Nakano Campus
URL	https://www.meiji.ac.jp/ggjs/index.html		
Curriculum	https://www.meiji.ac.jp/ggjs/model.html		
List of faculty members	https://www.meiji.ac.jp/ggjs/index.html		
Syllabus	https://www.meiji.ac.jp/ggjs/syllabus.html		

Graduate School of Global Business		location	Surugadai Campus
URL	https://www.meiji.ac.jp/cip/english/graduate/global/index.html		
Curriculum	https://www.meiji.ac.jp/mbs/curriculum/timetable.html		
List of faculty members	https://www.meiji.ac.jp/mbs/faculty/faculty-list.html		
Syllabus	https://www.meiji.ac.jp/mbs/curriculum/timetable.html <Notes> ●Classes are held from 6:55 pm to 10:00 pm on weekdays and from 9:00am on Saturday. Please make sure time table and course availability.		
Time table	https://www.meiji.ac.jp/mbs/curriculum/timetable.html		

Undergraduate Schools which Offer Classes in English

School of Global Japanese Studies (English Track)		location	Nakano Campus
URL	https://www.meiji.ac.jp/cip/english/englishtrack/index.html		
Curriculum	https://www.meiji.ac.jp/cip/english/englishtrack/englishtrack_curriculum_chart.html <Notes> ●The classes on the curriculum chart with " * " are offered in Japanese only. ●The subjects marked with "○" in the curriculum chart are required courses of regular students of Meiji University. Exchange students can not take the required courses for regular students except Japanese-language courses. ●The School of Global Japanese Studies (SGJS) only offers Japanese-language classes for English Track Students and Exchange students in SGJS. The class level is decided according to the placement test held by SGJS, and cannot be decided before arrival. Syllabus: https://www.meiji.ac.jp/nippon/office-info/6t5h7p00000e66ny-att/6t5h7p000033rz44.pdf < Introductory Level (Introductory)> Introductory Japanese (General) , Introductory Japanese (Vocabulary & Kanji) < Elementary Level (equivalent to JLPT N5 level)> Elementary Japanese (General), Elementary Japanese (Vocabulary & Kanji) < Pre-intermediate Level (equivalent to JLPT N4 level)> Pre-intermediate Japanese (General), Pre-intermediate Japanese (Vocabulary & Kanji) < Intermediate Level (equivalent to JLPT N3 level)> Intermediate Japanese (General), Intermediate Japanese (Vocabulary & Kanji) < Upper-intermediate Level (equivalent to first half of JLPT N2 level)> Upper-intermediate Japanese (General), Upper-intermediate Japanese (Vocabulary & Kanji) JLPT Preparation (Intermediate) < Pre-advanced Japanese Level (equivalent to JLPT N2 level)> Pre-advanced Japanese (General), Pre-advanced Japanese (Vocabulary & Kanji) JLPT Preparation (Advanced) < Advanced Level (JLPT N1 level)> Advanced Japanese (Reading) I / II , Advanced Japanese (Listening) I / II , Advanced Japanese (Writing) I / II , Advanced Japanese (Speaking) I / II < Upper-advanced Level (JLPT N1 level)> Japanese Expression (Writing), Japanese Expression (Speaking), Integrated Japanese A/B, Introduction to Advanced Academic Japanese A/B *Japanese Language Programs for International Students offered in Surugadai campus are not available for students in the School of Global Japanese Studies.		
List of faculty members	https://www.meiji.ac.jp/cip/english/undergraduate/nippon/faculty.html		
Syllabus	https://www.meiji.ac.jp/nippon/office-info/6t5h7p00000e66ny.html ●The classes in syllabus are not all offered for the Exchange students. The syllabus includes classes offered in Japanese only.		

Undergraduate Schools which Offer Classes in English

School of Political Science and Economics (only taking classes conducted in English)		locations	Surugadai Campus and Izumi Campus
URL	https://www.meiji.ac.jp/cip/english/undergraduate/economics/index.html		
Curriculum	https://www.meiji.ac.jp/cip/english/undergraduate/economics/chart.html		
List of faculty members	https://www.meiji.ac.jp/cip/english/undergraduate/economics/faculty.html		
Syllabus	https://www.meiji.ac.jp/seikei/student/6t5h7p00000ejc6i-att/6t5h7p00000ejc8t.pdf https://oh-o2.meiji.ac.jp/portal/index Language : English, Click "Guest Login" <How to search> Oh-o! Meiji / Search / Department: School of Political Science and Economics Academic Year : 2020 Academic Year Term: Spring Semester and Fall Semester Language: English		

School of Business Administration (only taking classes conducted in English)		locations	Surugadai Campus and Izumi Campus
URL	https://www.meiji.ac.jp/cip/english/undergraduate/business/index.html		
Curriculum	https://www.meiji.ac.jp/cip/english/undergraduate/business/chart.html		
List of faculty members	https://www.meiji.ac.jp/cip/english/undergraduate/business/faculty.html		
Syllabus	https://www.meiji.ac.jp/cip/english/undergraduate/business/enjsp3000000bvhe-att/enjsp3000000bvj7.pdf		

Graduate Schools which Offer Classes in English

Graduate School of Governance Studies (English Track)		location	Surugadai Campus
URL	https://www.meiji.ac.jp/cip/english/graduate/governance/index.html		
Curriculum	https://www.meiji.ac.jp/cip/english/graduate/governance/curriculum.html Exchange students must take a course called “research methods” taught by the supervisor the graduate school assigns to them. They must also take at least one class taught by that supervisor.		
List of faculty members	https://www.meiji.ac.jp/cip/english/graduate/governance/faculty.html Cross-appointed Professor cannot be chosen as the preferred supervisors in the online application.		
Syllabus	https://www.meiji.ac.jp/cip/english/graduate/governance/timetable-syllabus.html		
Time table	https://www.meiji.ac.jp/mugs2/curriculum/timetable.html		

Graduate School of Science and Technology, International Program in Architecture and Urban Design		location	Nakano Campus
URL	https://iaud.jp/		
Curriculum	https://iaud.jp/about/		
List of faculty members	https://iaud.jp/people/		
Syllabus	https://www.meiji.ac.jp/sst/grad/syllabus/6t5h7p00000gqbt9-att/6t5h7p00000nc7bo.pdf		

Graduate School of Business Administration		location	Surugadai Campus
URL	https://www.meiji.ac.jp/dai_in/business_administration/index.html		
Curriculum	https://www.meiji.ac.jp/dai_in/business_administration/curriculum/curriculum-business-administration.html		
List of faculty members	https://www.meiji.ac.jp/dai_in/business_administration/index.html		
Syllabus	https://www.meiji.ac.jp/dai_in/business_administration/6t5h7p00000ggapk-att/6t5h7p00000ggaui.pdf The course tiles written in English (P.44-47 and P.53-56) are offered in English.		

Graduate Schools which Offer Classes in English

Graduate School of Global Business		location	Surugadai Campus
URL	https://www.meiji.ac.jp/cip/english/graduate/global/index.html		
Curriculum	https://www.meiji.ac.jp/cip/english/graduate/global/chart.html		
List of faculty members	https://www.meiji.ac.jp/cip/english/graduate/global/faculty.html Cross-appointed Professor and Concurrently Appointed Lecturer cannot be chosen as the preferred supervisors in the online application.		
Syllabus	https://oh-o2.meiji.ac.jp/portal/index Language : English, Click “Guest Login” <How to search> Oh-o! Meiji / Search / Department: Graduate School of Global Business Academic Year : 2020 Academic Year Term: Spring Semester and Fall Semester Language: English		
Time table	https://www.meiji.ac.jp/mbs/curriculum/timetable.html		

Graduate School of Global Governance		location	Surugadai Campus
URL	https://www.meiji.ac.jp/cip/english/graduate/gsgg/index.html		
Curriculum	https://www.meiji.ac.jp/cip/english/graduate/gsgg/chart.html		
List of faculty members	https://www.meiji.ac.jp/cip/english/graduate/gsgg/faculty.html		
Syllabus	https://www.meiji.ac.jp/cip/english/graduate/gsgg/glqts00000003awr-att/a1594119099604.pdf		