

Guidebook for MIND Users

Mobile Information Outlet Connection Service

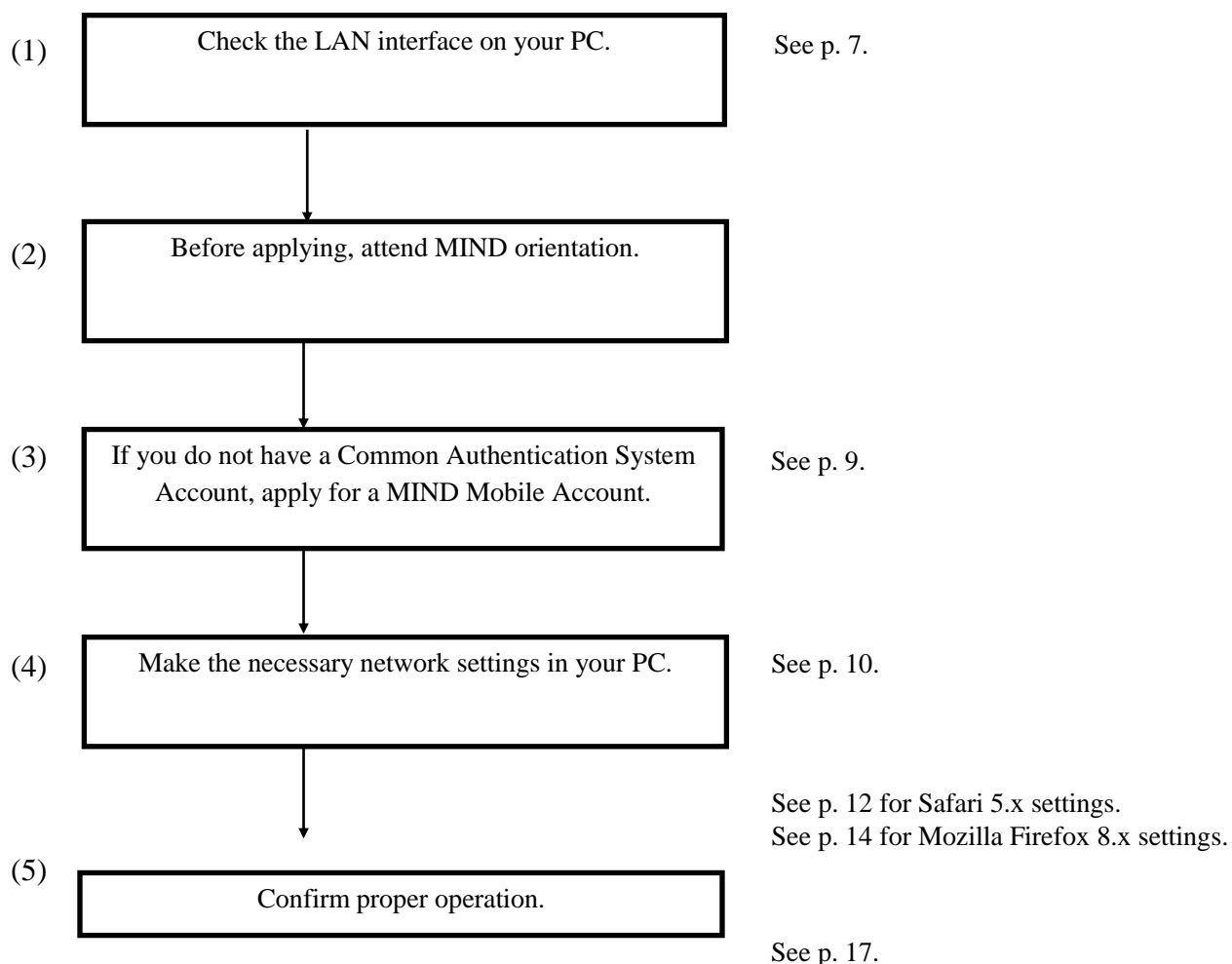
(Mac OS X 10.6 Edition)

March 29, 2017

Network Promotion Division
IT Systems & Infrastructure Headquarters

Procedures for Using Mobile Information Outlet Connection Service

This Guidebook explains how to use the mobile information outlets located on each campus. The procedures are outlined below. See the indicated pages for a more detailed description.



See p. 12 for Safari 5.x settings.
See p. 14 for Mozilla Firefox 8.x settings.

Check by actually connecting your PC to a mobile information outlet and seeing if you can view websites.

Contents

1. What Is MIND?	4
2. Connections to MIND	5
3. What Is Mobile Information Outlet Connection Service?	6
4. Before Using Mobile Information Outlet Connection Service	7
4.1. Required Equipment.....	7
4.2. Mobile Information Outlet Locations.....	8
4.3. Accounts for Using Mobile Information Outlet Connection Service	9
5. Network Setup	10
6. Web Browser Settings.....	12
6.1. Safari 5.x	12
6.2. Mozilla Firefox 8.x.....	13
7. Viewing Websites.....	14
8. Troubleshooting.....	16
9. Where to Inquire about Network Connections and Trouble	17
10. Reference URLs.....	18

1. What Is MIND?

MIND (Meiji University Integrated Network Domain) is the general name for the networks in Meiji University. MIND connects to the science information network SINET operated by the National Institute of Informatics (NII) and to the commercial Internet service provider IJ, as part of the overall Internet (Fig. 1). It can therefore be used for sending e-mail to people all over the world and for viewing Internet websites.

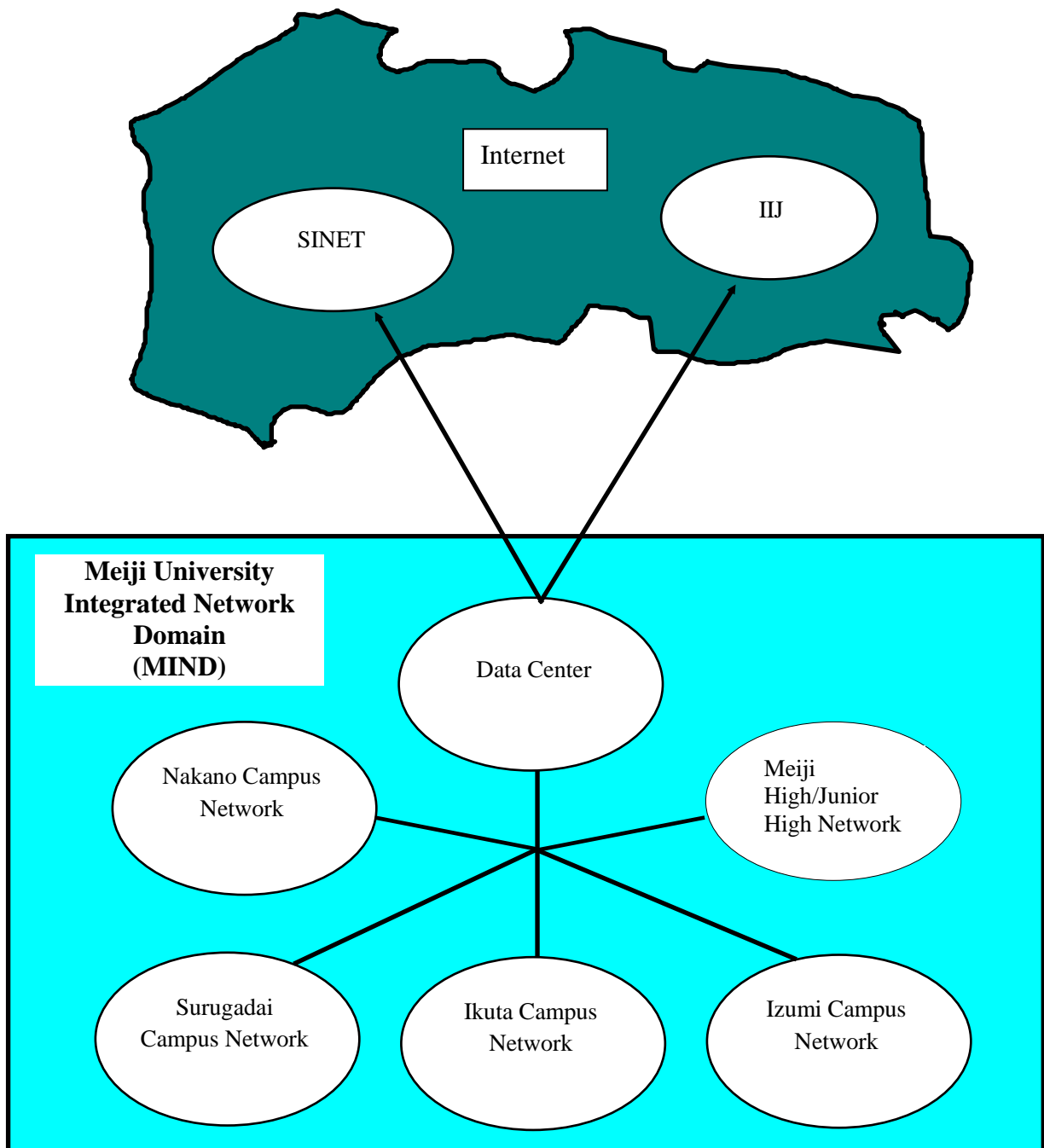


Fig. 1. Relation of MIND to SINET, IJ, and the Internet

2. Connections to MIND

You will need to apply for use before you can connect a computer to MIND for accessing network services. The application procedures are of the following two kinds, depending on how you will be connecting a computer to MIND.

1. Procedure when using a computer located in a research office, laboratory, etc.

→ The person responsible for connection submits a MIND User Application to the IT Systems & Infrastructure Headquarters.

2. Procedure when using MIND Mobile Connection Services

(1) Mobile Information Outlet Connection Service

A service used for temporarily connecting to the network from a mobile information outlet installed on each campus.

(2) SSL-VPN Connection Service

A service for temporarily connecting to a university network from home, overseas, or other off-campus location using the Internet.

(3) Wireless LAN Connection Service

→ The individual user connects with a Common Authentication System Account.
(Those without such an account will need to apply for a MIND Mobile Account.)

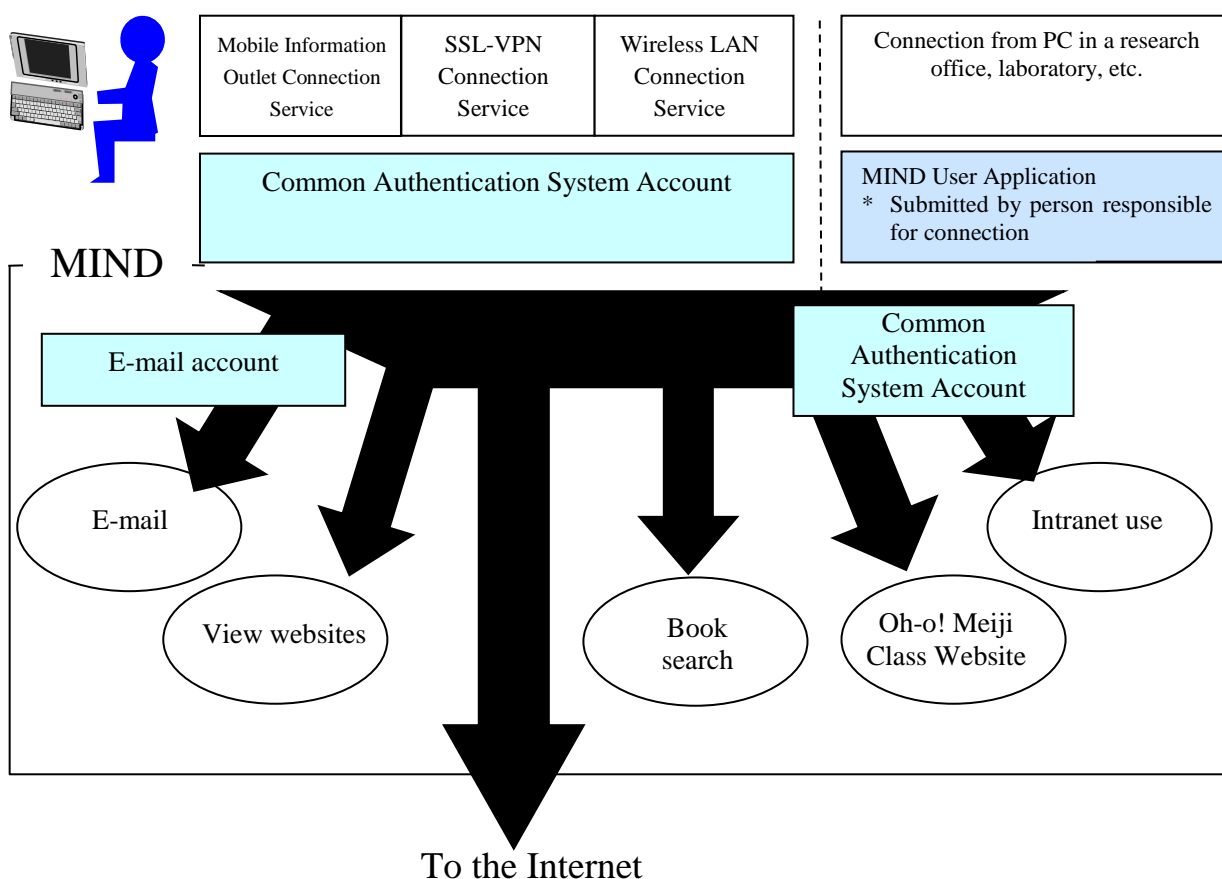


Fig. 2. Types of MIND Connections and Available Services

* After connecting to MIND, you will be able to make use of the e-mail service provided by the IT Systems & Infrastructure Headquarters, the book search service provided by the university libraries, and other services.

3. What Is Mobile Information Outlet Connection Service?

Mobile Information Outlet Connection Service lets you temporarily connect a notebook PC or other terminal to the university network (MIND) by plugging in to one of the mobile information outlets located on each campus.

By taking advantage of this connection service, you can use your own PC to access a WWW server and view websites, to send and receive e-mail, to use online library services, or to make use of other services provided by MIND, the IT Systems & Infrastructure Headquarters, the university libraries, and others.

This Guidebook describes the procedure for connecting a PC to a mobile information outlet on a campus and notes precautions in use.



Fig. 3-1. Information Outlet



Fig. 3-2. LAN Interface

4. Before Using Mobile Information Outlet Connection Service

4.1. Required Equipment

The Mobile Information Outlet Connection Service specifications are as follows.

Software: Must support TCP/IP
 Must support DHCP

Hardware: Must support 10BASE-T or 100BASE-TX

TCP/IP is the name of standard protocol used with the Internet and other network communications.

DHCP is a function that automatically sets in a network-connected PC the minimum necessary configuration information for network communication, such as IP address and gateway address.

This functionality is standard provision in recent PC operating systems such as Microsoft Windows (XP, Vista, and 7) and Apple Macintosh (Mac OS X 10.x).

Note: The explanations in this Guidebook primarily assume Mac OS X 10.6 as OS and either Safari 5.x or Mozilla Firefox 8.x as the web browser. If you need help with another OS or web browser, contact the support desk on your campus (see p. 20).

4.2. Mobile Information Outlet Locations

Mobile information outlets are installed in the following locations (as of April 1, 2013).

See the following page for details of the locations.

<http://www.meiji.ac.jp/mind/mobile-concent/index.html>

- **Surugadai Campus**

- Liberty Tower (Central Library, all classrooms, seminar rooms, lounges, graduate student research offices, etc.)
- Academy Common (30-student classrooms, study hall 2 on the 11th floor, etc.)
- Building No. 14 (2nd, 3rd, 5th floors, graduate student research offices, etc.)
- Sarugakucho Building
- Conference rooms, etc.

- **Izumi Campus**

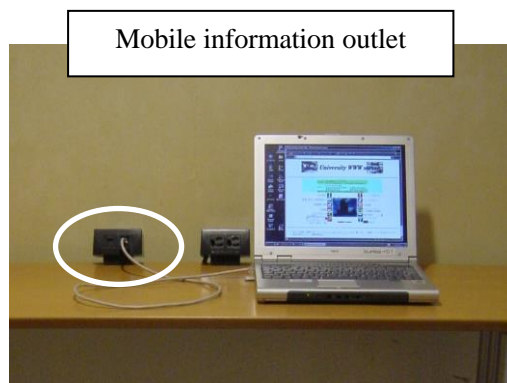
- Media Building (classrooms, study halls [brought-in PC area], faculty lounge, staff information terminal room)
- Building No. 1 (basement lounge, 2nd floor east lounge, 3rd floor east lounge and north lounge, 4th floor north lounge)

- **Ikuta Campus**

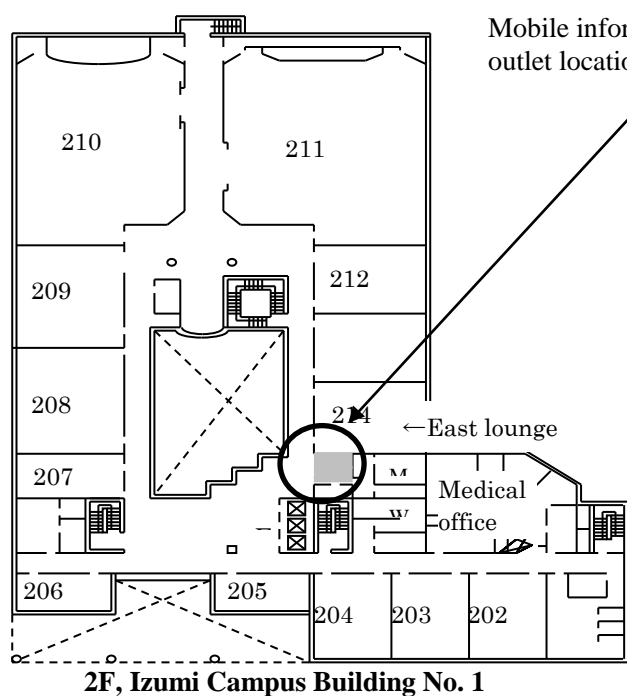
- Main Building (3rd and 4th floors)
- Library (2nd floor reference collection area)
- Student Center (2nd and 3rd floor lounges)
- Cafeteria (1st floor lounge)

- **Nakano Campus**

- Classrooms (high rise wing, 311, 413, 515, 516)
- Lounge (high rise wing, 3rd, 6th, 7th, 9th and 13th floors)



Examples of locations on Izumi and Ikuta Campuses are shown below.



4.3. Accounts for Using Mobile Information Outlet Connection Service

Mobile Information Outlet Connection Service can be used with a Common Authentication System Account.

University staff and students having a Common Authentication System Account can use Mobile Information Outlet Connection Service without needing to perform any procedures in advance.^(*)

(*) Students must attend MIND orientation before they can use MIND Mobile Connection Services.

Persons not having a Common Authentication System Account (mainly research promoters, research assistants, and visiting fellows) will need to apply separately for a **MIND Mobile Account**.

Applying for a MIND Mobile Account is done by submitting a user application form. For more information, ask **your school office, research promotion and intellectual property office, or other affiliated office.**

5. Network Setup

- (a) From the Apple Menu (open by clicking the Apple mark at the top right of the desktop), select System Preferences (Fig. 5-3-1).

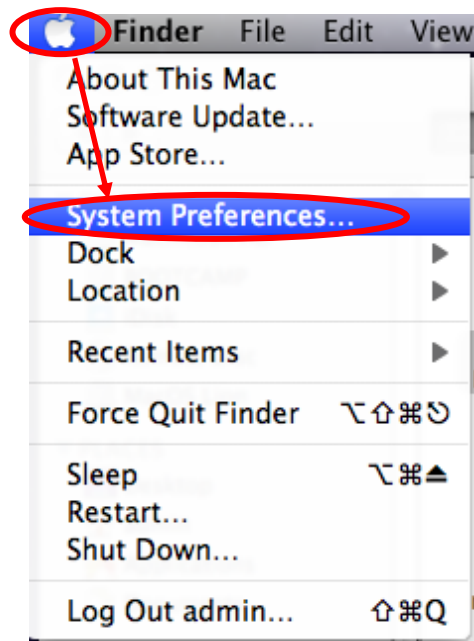


Fig. 5-3-1. Select System Preferences

- (b) Select the Network icon in System Preferences (Fig. 5-3-2).



Fig. 5-3-2. Select Network

- (c) In the Network window, click Advanced (Fig. 5-3-3).

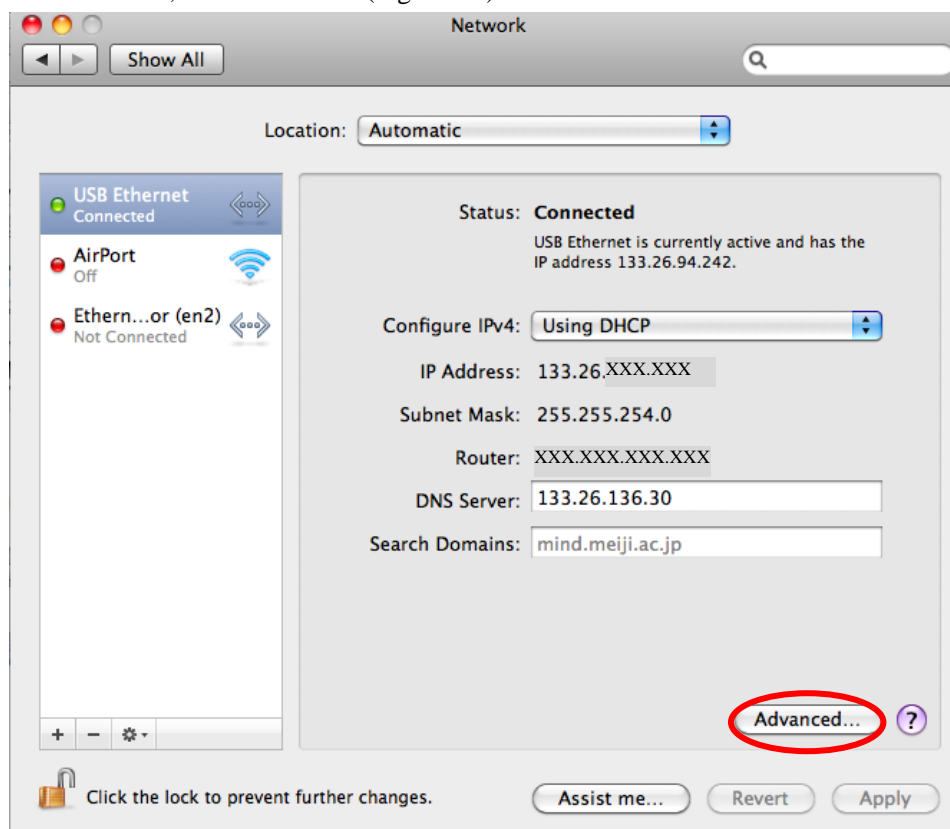


Fig. 5-3-3. Click Advanced in the Network Window

- (d) The TCP/IP information should be set to "Using DHCP" and with an IPv4 address value of "133.26.XXX.XXX" ("XXX" are numbers). Click OK and proceed to 6. Web Browser Settings (Fig. 5-3-4).

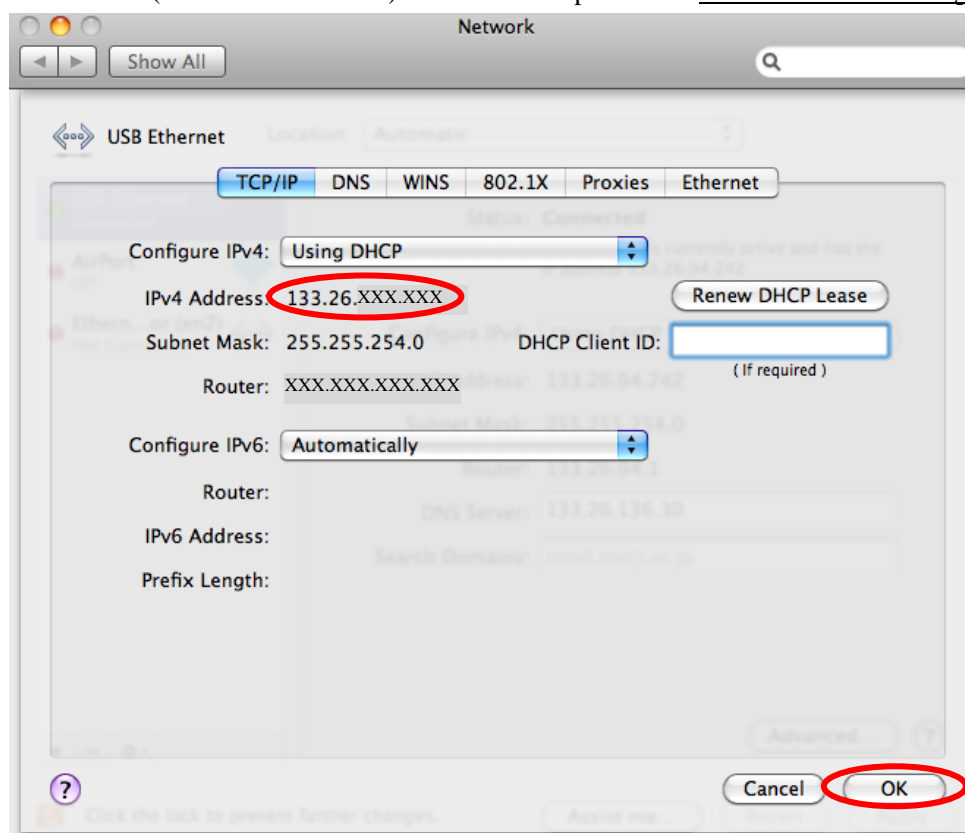


Fig. 5-3-4. TCP/IP Advanced Settings Window

6. Web Browser Settings

6.1. Safari 5.x

- (a) Launch Safari and select Preferences from the Safari pull-down menu (Fig. 6-1-1).

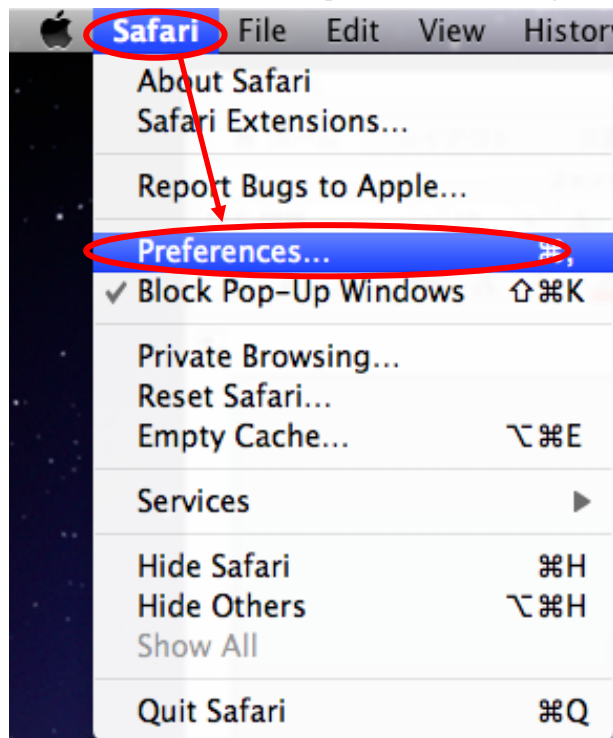


Fig. 6-1-1. Select Safari Preferences

- (b) In the General tab of the Preferences window, enter **<http://www.meiji.ac.jp/>** as the home page (Fig. 6-1-2).

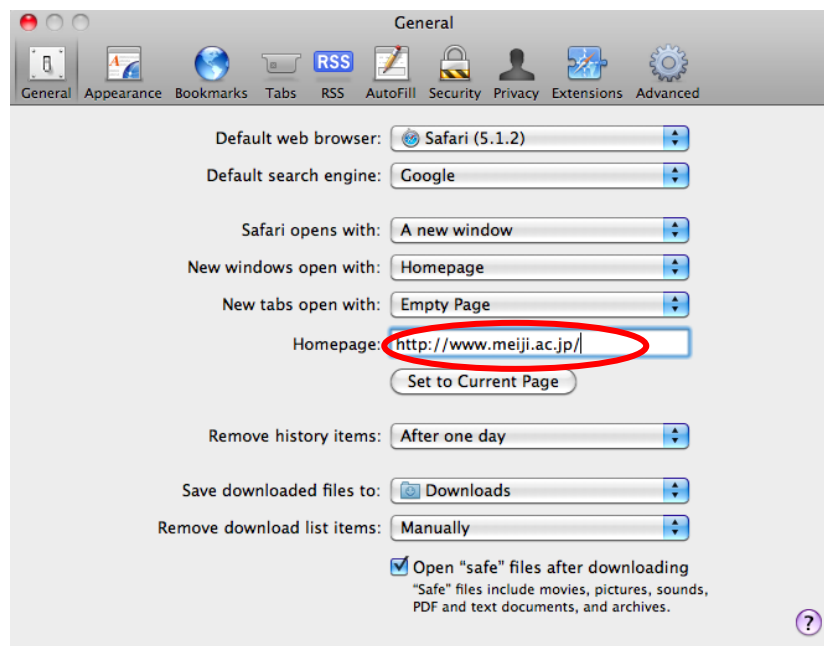


Fig. 6-1-2. General Preferences Window (Safari)

6.2. Mozilla Firefox 8.x

- (a) Launch Firefox and select Preferences from the Firefox pull-down menu (Fig. 6-2-1).



Fig. 6-2-1. Select Firefox Preferences

- (b) Open the General tab in the Preferences window and enter <http://www.meiji.ac.jp/> for Home Page in the Startup section (Fig. 6-2-2).

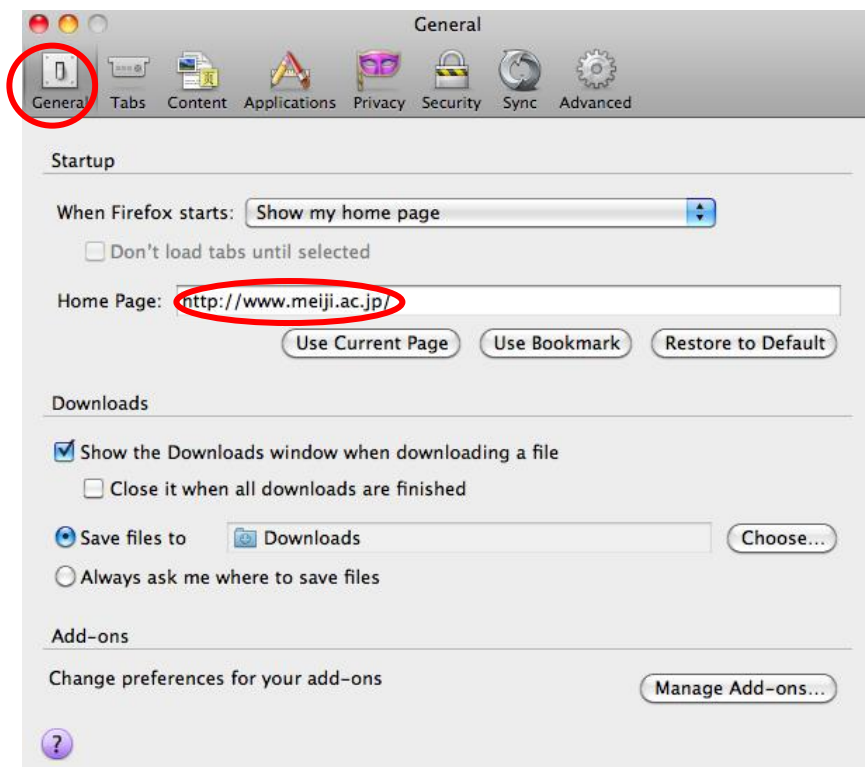


Fig. 6-2-2. General Preferences Window (Firefox)

7. Viewing Websites

Now try viewing the Meiji University website.

- (a) Open a web browser.
- (b) A login window appears for entering your user name and password to connect to the Mobile Information Outlet Connection Service.
 - Safari 5.x (Fig. 7-1)



Fig. 7-1. Safari 5.x Login Window

- Mozilla Firefox 8.x (Fig. 7-2)

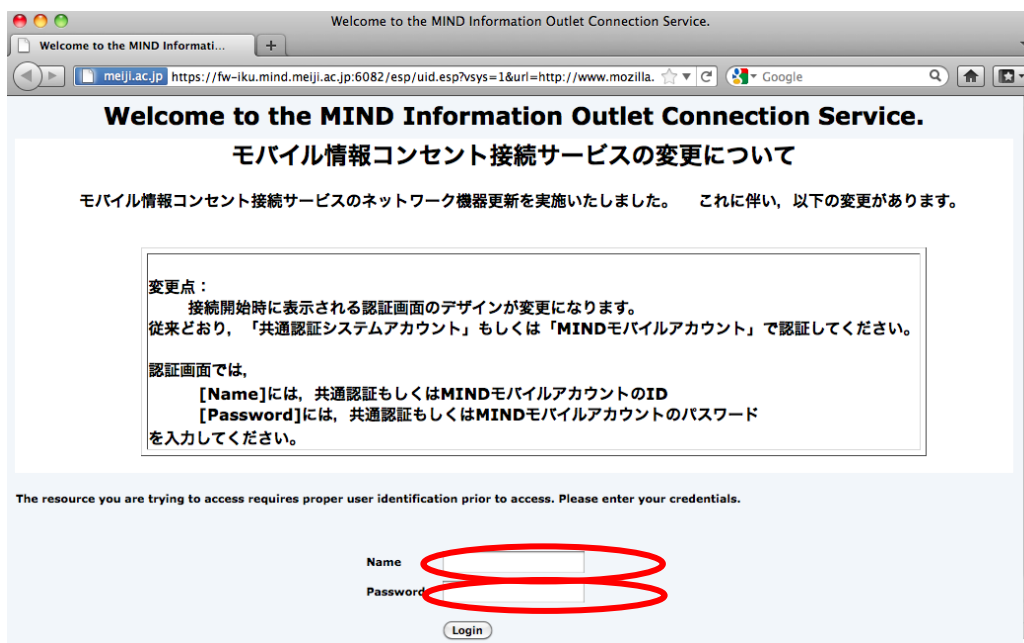


Fig. 7-2. Mozilla Firefox 8.x Login Window

- (c) In this dialog box, enter your login name and password for the Common Authentication System Account (or for those not having one, your MIND Mobile Account) and click the Login button.

- (d) If authentication succeeds with the login name and password, the Meiji University website loads. (Fig. 7-3)



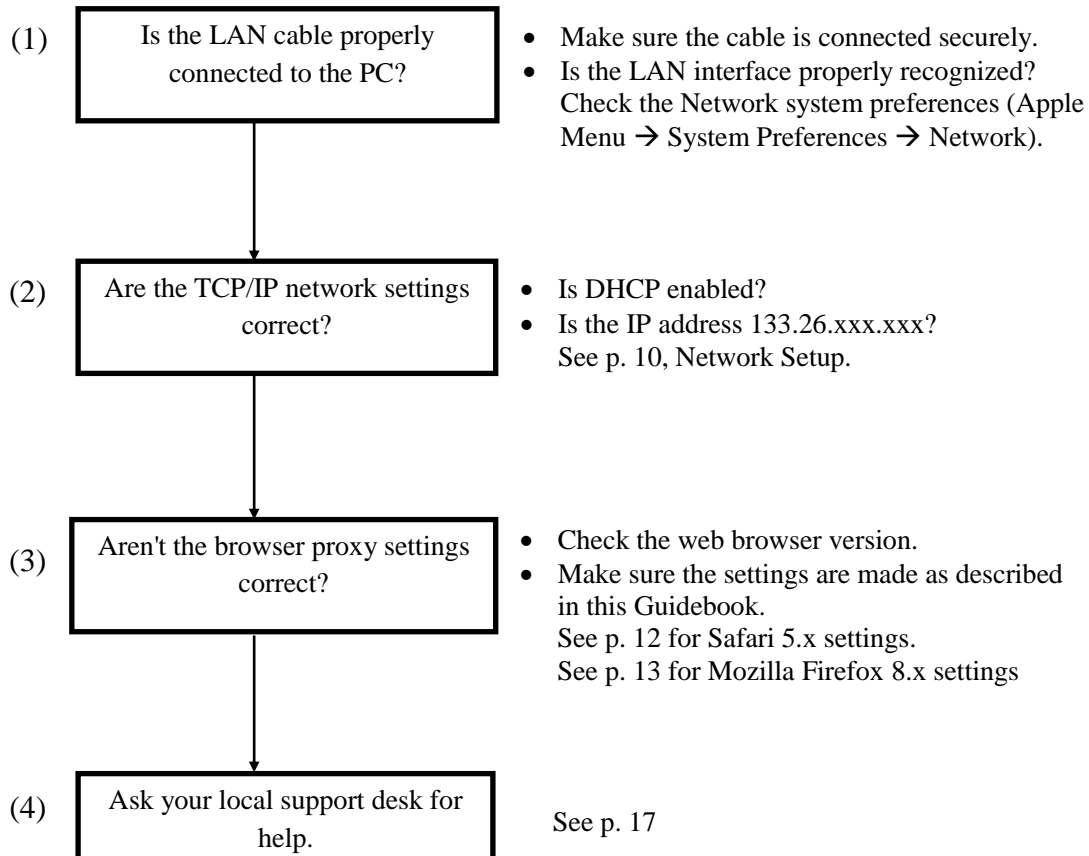
Fig. 7-3. Meiji University Website

- (e) Confirm that you can access off-campus sites, such as those in your bookmarks list. If you run into problems, try the suggestions at [8. Troubleshooting](#).

8. Troubleshooting

Are you having trouble with the network setting? Are you unable to view websites? First check the items below. This will help you determine where the problem lies (faulty hardware, a mistake in software settings, etc.). If you cannot determine a solution, contact your campus support desk.

The measures suggested to the right of each item assume Mac OS X as the PC OS.



9. Where to Inquire about Network Connections and Trouble

Surugadai Campus:

Surugadai Campus Support Desk
Location: 7F, Building No. 12
Tel.: 03-3296-4286 (Ext.: 4286)

Media Support Office
Location: 7F, Building No. 12
Tel.: 03-3296-4438 (Ext.: 4438)

Izumi Campus:

Izumi Campus Support Service
Location: 1F, Izumi Media Building
Tel.: 03-5300-1190 (Ext.: 1190)

Izumi Media Support Office
Location: 1F, Izumi Media Building
Tel.: 03-5300-1189 (Ext.: 1189)

Ikuta Campus:

Ikuta Campus Support Desk
Location: 5F, Main Building
Tel.: 044-934-7711 (Ext.: 7711)

Ikuta Media Support Office
Location: 5F, Main Building
Tel.: 044-934-7710 (Ext.: 7710)

Nakano Campus:

Nakano Campus Support Desk
Location: 4F, Low Building
Tel.: 03-5343-8072 (Ext.: 8072)

Nakano Research and Education Support Office
Location: 3F, Low Building
Tel.: 03-5343-8012 (Ext.: 8012)

10. Reference URLs

Meiji Univ. website	http://www.meiji.ac.jp/
MIND website	http://www.meiji.ac.jp/mind/
IT Systems & Infrastructure Headquarters	http://www.meiji.ac.jp/isc/
Support Desk	http://www.meiji.ac.jp/mind/support/office.html
MIND Mobile Account user application	http://mobile.mind.meiji.ac.jp/