

Top Global University Project (Type B) Meiji University

1. Outline

[Project Name]

Going Global Meiji 8000!

- Developing Students with a Frontier Spirit for the Future, by Encouraging Students' Proactive Learning -

[Our Vision of Meiji University as a Top Educational Institution]

Globalization is making it possible to instantly communicate all kinds of information around the world, and this is having a profound impact on politics, economics, culture and other aspects of human society. The world needs Global Human Resources with a Frontier Spirit for the Future, who can cultivate mutual trust within the global community, working together to solve problems and making major changes while shaping a new future, based on a deep understanding of the history and culture of regions affected by environmental degradation, poverty, human rights violations and other global issues. Through its efforts in the Top Global University Project, Meiji University is developing students with a frontier spirit for the future, by encouraging students' proactive learning, we will send out approximately 8,000 graduates each year into the world as global human resources who can learn, think and act proactively to shape a new future in our diverse world.

[Project Summary]

The project envisions developing global human resources with a frontier spirit for the future capable of thinking and making decisions on their own, and creating new values in the diversified world by globalization. To achieve this, Meiji University is cultivating superlative students by (i) based on Comprehensive Educational Reform that dramatically improve the educational ability of Meiji University, (ii) developing three schemes for proactive learning, and (iii) establishing a global campus to cultivate proactive learning is the norm. Meiji University is also raising its standards, including those for students occupying the average student profile. Our Comprehensive Educational Reform will lead to an "Active Term" system (academic terms that have no required subjects and combine inactive periods during the summer or spring). This will increase the mobility of students and teaching staff, and encourage students to study proactively, with the support of the following initiatives that are applied in combination.

(1) New educational methods for proactive learning (distance education, flipped lectures, problem-based learning [PBL], etc.)

(2) 100 programs to go global (summer sessions at universities outside Japan, overseas internships, etc.)

(3) Student to student support systems (peer learning, an accredited student system sending Japanese students for study overseas and accepting foreign students to Meiji University, etc.)

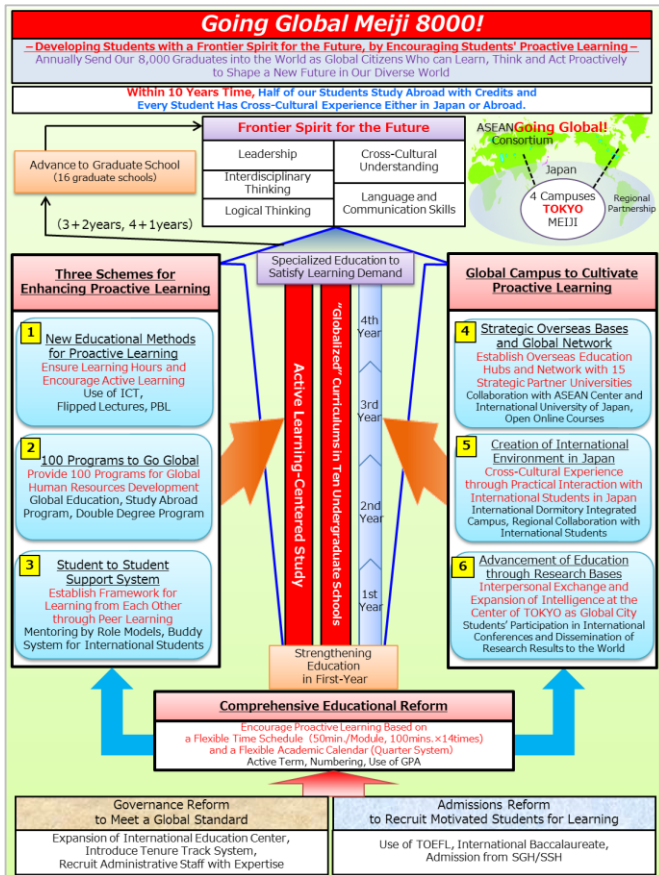
(4) Develop strategic overseas Bases (15 educational institutions) and a global network (consortiums)

(5) Creation of an international environment for cross-cultural experiences in Japan (interaction with foreign students)

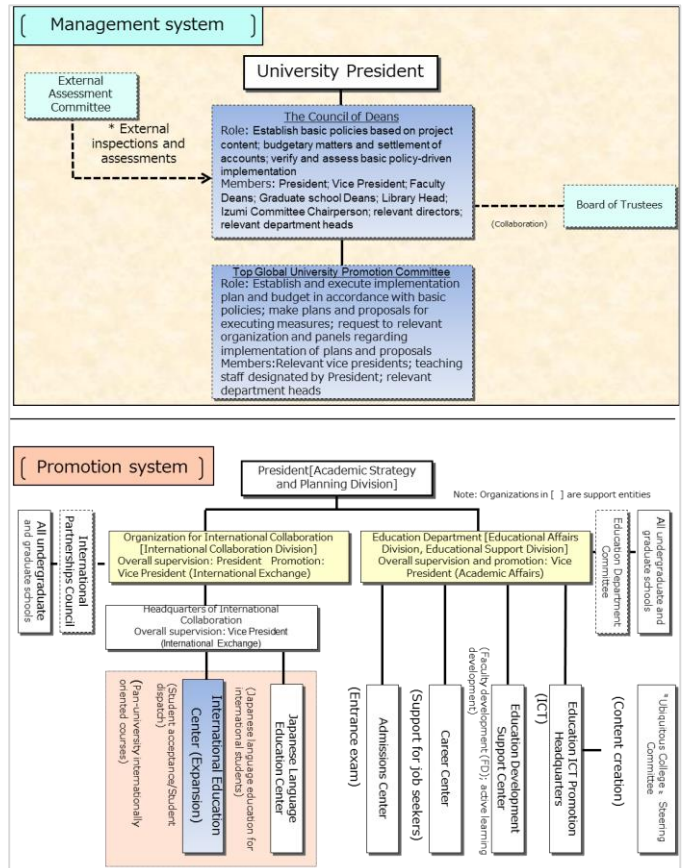
(6) Advancement of education through research bases (partnerships bringing together industry, educational institutions and governments)

To cultivate proactive learning, the most important endeavor is sending students overseas. Meiji University intends to send 4,000 students overseas each year (one out of every two graduates and graduate school graduates), to study special subjects in other countries. Likewise, we intend to accept 4,000 foreign students each year. This will help create an international environment in Japan, provide opportunities for Japanese students to study with them, and promote the dynamism required to cultivate human resources who will make a name for themselves in the world.

[Project Concept]



[Organization for Project Implementation]



[10 Year Plan Summary]

		Phase establishing education system foundation for project implementation			Phase using that base to boost educational potential and super-globalization				Phase evaluating super-globalization				
		2014	2015	2016	2017	2018	2019	2020	2021	2022	2023		
Globalization promotion	Opening up to the world	Scholarships	New: International Students Incentive Scholarship Program; Special Grant for Privately Financed International Students										
		Foreign student dormitories	Acquire land, construct buildings	construction	New: management of dormitories housing both Japanese and foreign students								
		Support for overseas study	Development systems	Formal adoption of bridging program (linking language study to regular subject after the study completion) New: introduction of student-to-student support system									
	Subject	Focus on enhanced language ability	Existing: Program to enhance practical English ability			Expansion of Program to enhance practical English ability				Subjects to be required			
		Subjects focused on study abroad	Existing: Courses preparing students for study abroad			New: Subjects relevant to study abroad							
		Global Education Program	Existing: International Education Program Existing: Subjects held in English in each faculty Existing: Cross-faculty practical subjects			New: Global education subjects							
Foundation	Governance	Organizational structure	Existing: International Student Center		Expansion of International Education Center								
		Personnel affairs of teaching staff	Determination of appointment policies			Adoption of tenure track system		Appointment of tenure track teachers					
		Personnel affairs of non-teaching staff	Rules established			Hire global-oriented professionals							
	Education system	Numbering	For some subjects		For subjects in all faculties								
		Academic calendar	Prepare for adoption	Develop system	Exam administration 14-week half-year term (7+7 weeks); set academic year; [100-min. class per segment]								
		Scheduling	100 minutes per segment (50+50 min.)										
		Active terms	System Design	Curriculum revision		For some faculties		For all faculties					
	Entrance exams	General entrance exams	Begin system-related studies	Release of entrance exam information		Carry out the entrance exam (University wide exam)			Carry out the entrance exam (faculty entrance exam)				
		Multi-faceted entrance exams	Begin system-related studies	Release of entrance exam information	New: International baccalaureate university qualification tests, SGH entrance exams, super-science high school entrance exams								
	External assessments		New: Establish External assessment committee			External assessments (1st time)	Improvements guided by external assessments		External assessments (2nd time)	Improvements guided by external assessments		External assessments (Completed)	

[Special-focus Efforts (Promotion of Globalization, Governance Reform, Educational Reform, etc.)]

Development of New Pedagogical Systems as Part of the Comprehensive Educational Reform

In accordance with our aim to amend some of our original criteria and thereby permit the establishment of a flexible academic calendar, we have decided to adopt a New Class Schedule consisting of 14 weeks of classes for each term. This schedule will replace the current 90-minute class system with a 100 minute (50 minutes + 50 minutes) system, beginning in the 2017 academic year. This decision will ensure conformity with the number of class hours required by law. The 50-minute module system will increase class hours per segment and permit more flexible class configurations, thereby promoting qualitative improvements in teaching methods and encouraging active learning. With a lecture term of 14 weeks and a more flexible academic calendar, each term can be divided into two 7-week periods to create quarters that are better suited for the development purposes and curriculums of each school (department) and graduate school, creating learning frameworks more conducive to study.

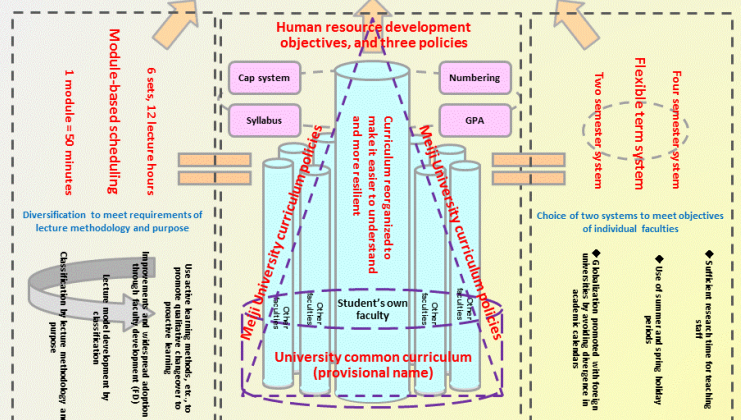
When the new class schedule and academic calendar are implemented, beginning in 2017, adjustments to the curriculums for each undergraduate and graduate school will permit required and major subjects to be offered in each quarter, letting students work toward completion on their own.

This in turn will make the establishment of active terms possible, letting students pursue activities in a proactive manner. Students will create their own active terms, using them to gain experience overseas such as short term studies, training, practical studies, internships. To satisfy the unique aspirations of each student, Meiji University will offer them opportunities to study subjects they are particularly keen on, such as international programs promoting overseas study, special lectures in other departments, and programs offered throughout the university. To encourage students to design their own career paths as talented individuals with a Frontier Spirit for the Future, we will take the necessary steps to establish a base that offers them cross-cultural experiences either in Japan or abroad, to proactively experience other cultures.

<Comprehensive Educational Reform>

Comprehensive Educational Reform Organogram

Comprehensive educational reform to boost educational potential at Meiji University - Pan-university curriculum design -



<New lecture schedule>

