

Open 2025 March.

敷金、礼金、仲介手数料は不要！

No Key money, Security deposit, Agency fee

家賃/ Rent: 81,000 ~ 84,000 yen

共益費/ Common Service Fee: 24,000 yen

Electricity, gas, water, and internet included

入居管理料/ Handling Fee: 50,000 yen



学校まで電車&徒歩で36分！  
36 min. to school by train & walk！

アクセス: JR中央線 西荻窪駅より徒歩7分

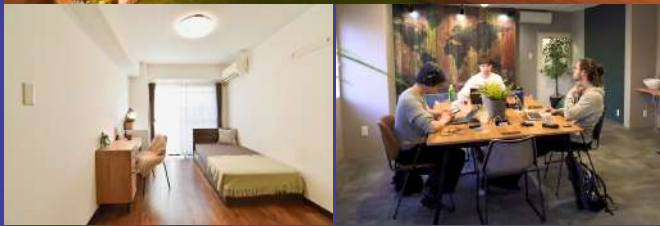
全部屋に家具家電付き！(机, 椅子, ベッド, エアコン, 冷蔵庫など)

ラウンジ, ワーキングルーム, ガーデン, フィットネスルーム, ランドリーなど  
共有設備も充実！5階建てエレベーター付き！

Location: 7 min. walk from Nishi-Ogikubo Station

All rooms are fully furnished and equipped!

(desk, chair, bed, air conditioner, refrigerator, etc.)

Shared facilities include lounge, Working Room, Garden, Fitness Room,  
Laundry, etc. 5 floors with elevator!

## First house Takaido Suginami



富士見が丘駅から明大前駅まで直通12分  
12 min from Fujimigaoka Sta to Meidaimae Sta

アクセス: 京王井の頭線 富士見ヶ丘駅より徒歩5分

全部屋に家具家電付き！(机, 椅子, ベッド, エアコン, 冷蔵庫など)

ラウンジ, ワーキングルーム, ランドリーなど、共有設備も充実！

Location: 5 min. walk from Fujimigaoka Station

All rooms are fully furnished and equipped!(desk, chair, bed, air conditioner, etc.)

Shared facilities include lounge, working room, laundry, etc!



敷金、礼金、仲介手数料は不要！

No Key money, Security deposit, Agency fee

家賃/ Rent: 64,500 ~ 69,500 yen

共益費/ Common Service Fee: 20,000 yen

Electricity, gas, water, and internet included

入居管理料/ Handling Fee: 30,000 yen

## Campus Living Eco-da

アクセス: 都営大江戸線 新江古田駅より徒歩2分

全部屋に家具家電付き！

敷金、礼金、仲介手数料は不要！

No Key money, Security deposit, Agency fee

家賃/ Rent: 96,000 ~ 102,000 yen

共益費/ Common Service Fee: 24,000 yen

Electricity, gas, water, and internet included

入居管理料/ Handling Fee: 30,000 yen

デポジット/ Deposit: 20,000 yen



Others

Easy access to campus



More info about  
Green Share Nishi - Ogikubo



More info about  
Firsthouse Takaido Suginami



More info about  
Campus Living Eco-da

