



School of Business Administration
Meiji University



Contact: School of Business Administration Office, Meiji University
Address: 1-1 Kanda-Surugadai, Chiyoda-ku, Tokyo 101-8301, Japan
E-mail: sba@meiji.ac.jp



About Our School

Established in 1953, the Meiji University School of Business Administration was the first of its kind among privately-owned universities. As we celebrated our 70th anniversary in 2023, we take immense pride in the success of our alumni who have made rewarding careers in the private sector (at for-profit and non-profit organizations), government institutions, and specialized professions, such as certified public accountants and tax accountants. It is our mission to provide broad-ranging education to develop our students into capable individuals with the potential to create new value and make a meaningful contribution to global society.

Students of the School of Business Administration are required to take a large number of general education and language courses through the four-year curriculum. Specialist subjects, meanwhile, are taught in three discrete departments to enable students to delve more deeply into their chosen fields: the Department of Business Management, the Department of Accounting and the Department of Public Management.

History

1881	1903	1953	1959
Meiji Law School Established	Meiji Law School renamed Meiji University	School of Business Administration established	Graduate School of Business Administration established



Campuses

Surugadai Campus

The Surugadai Campus is the traditional home to Meiji University. The campus is located in the Kanda Surugadai area close to Kasumigaseki, Otemachi and other major districts, where many of the flagship companies of Japan and government ministries are concentrated, while still retaining a good old atmosphere of a college town.



Izumi Campus

The Izumi Campus is a vibrant campus that is home to freshmen and sophomores. It features the Izumi Learning Square, which is equipped with a variety of classrooms designed to support diverse learning environments and promote active learning. The campus also includes a gym which students can use at any time, as well as a state-of-the-art library with an open atmosphere and various types of study carrels. Surrounded by lush greenery, the campus is conveniently located near areas that are at the heart of youth culture, such as Shinjuku, Shibuya, and Kichijoji.

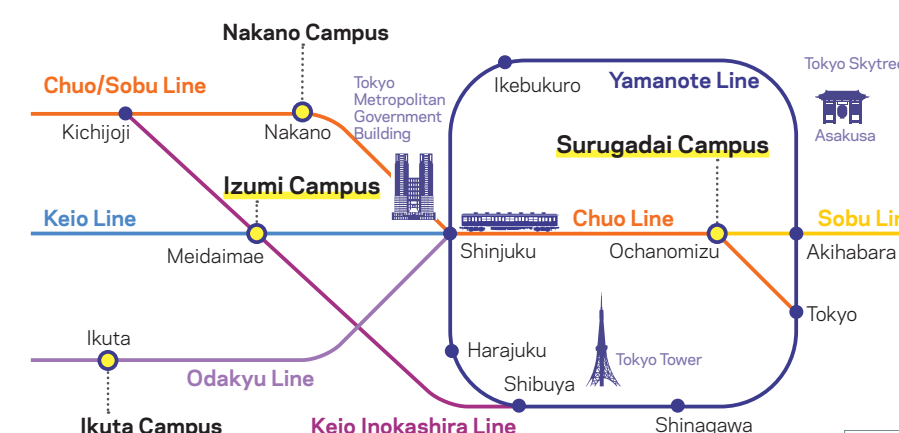


Get Innovative! Go global! Be at the heart of Tokyo!

CONTENTS

- 1-2 About Our School / History / Campuses / Access
- 3-4 SBA Courses
- 5-6 Academic Calendar / Learning Japanese / University Club Activities (Circles)
- 7-8 Student Life / Interviews with Exchange Students
- 9-10 International Partner Institutions / DATA of SBA

Access



For more details:
<https://www.meiji.ac.jp/cip/english/about/campus/index.html>



SBA Courses

A variety of business courses offered in English

*All courses are subject to change. The latest information of courses is on our website.
<https://www.meiji.ac.jp/cip/english/undergraduate/business/exchange/subject.html>



Spring Semester (April-July)

Global Issues A/C
 Liberal Arts Seminar in Foreign Languages A/C
 Social Thought
 TOEFL Reading
 TOEFL Listening
 TOEFL Preparation A
 English Exams A
 Genres of Writing
 Business English A
 Business Presentation A
 Fundamentals of Management A/C
 Transcultural Business Communication A
 Strategic Business Communication A
 Corporate Social Responsibility
 Internet Business A
 Contents Business A
 Core Subjects Seminar C
 Innovation Strategy in Japan A
 Strategic Marketing A
 International Management A
 Comparative Business Management A
 Transcultural Management A
 Special Lectures on Business Management C
 Basic Accounting A
 Financial Accounting A
 Management Accounting A [M]
 Business for Social Impact
 Social Impact Investment
 Tourism Management A
 Strategic Analysis of Japanese Companies A
 Introduction to Public Management

Fall Semester (September-January)

Global Issues B/D
 Liberal Arts Seminar in Foreign Languages B/D
 Religious Thought
 TOEFL Speaking
 TOEFL Writing
 TOEFL Preparation B
 English Exams B
 Speech and Debate
 Business English B
 Business Presentation B
 Fundamentals of Management B/D
 Transcultural Business Communication B
 Japanese Economy
 Strategic Business Communication B
 Internet Business B
 Contents Business B
 Core Subjects Special Lectures B
 Core Subjects Seminar D
 Innovation Strategy in Japan B
 Strategic Marketing B
 International Management B
 Comparative Business Management B
 Transcultural Management B
 Special Lectures on Business Management D
 Basic Accounting B
 Financial Accounting B
 Management Accounting B [M]
 Introduction to Public Management
 International Development
 Tourism Management B
 Strategic Analysis of Japanese Companies B

Well-organized small-class education

We offer seminar-style classes for students to delve deep into their specialized fields toward their dreams and goals, going beyond simply completing assigned tasks. By enhancing presentation and discussion skills in interactive classes of 10 to 20 students led by one instructor, students can increase knowledge and ability needed for studies in the seminars of their special fields. Participating in a seminar is a valuable opportunity for international students to not only study and seek guidance from the instructor but also to make life-long friends with Japanese students.



Seminars actively accepting international students (As of April 2025)

The following faculties regularly accept international exchange students into their seminars.



EDAMURA Shohei Professor
 Philosophy



HAO Yan Shu Professor
 Human Resources Management of Japanese Companies in China



ICHINOSE Masashi Professor
 Exercise training for improving health and athletic performance. Cardiovascular, respiratory and body temperature regulation during exercise.



KATO Shizuko Professor
 Business Management in Russia/Central and Eastern Europe



KIERNAN Patrick Professor
 Intercultural Communication in Business



KIKUCHI Masao Professor
 Public Policy and Management from a Comparative Perspective



MATSUGU Sawako Senior Assistant Professor
 Area Studies, English Language Education, Applied Linguistics



SHIMIZU Kazuyuki Professor
 Comparative business management and ESG investments related to corporate governance between the EU and Japan.



SUMI Atsushi Associate Professor
 Transcultural Management



USHIMARU Hajime Professor
 Emergent Processes of Inter-organizational Networks



YAMASHITA Yoshie Professor
 Equip students with basic academic skills in English

Academic Calendar

*Please check the latest academic calendar on our website.
<https://www.meiji.ac.jp/cip/english/about/academiccalendar.html>



Spring Semester: April 1 – September 19

Aug.-Late Sep.
Summer Break

Fall Semester: September 20 – March 31

Late Dec.-Early Jan.
Winter Break

Feb.-Mar.
Spring Break

SBA Events



i-meeting (Throughout the year)

“i-meeting” provides a valuable opportunity for cross-cultural communication to share diverse values with all students and faculty members at School of Business Administration.



English Presentation Contest (Fall semester)

Students from the School of Business Administration form teams to participate in this contest, presenting on a chosen theme. Judges provide feedback and evaluate the performances, with top-performing groups receiving prizes.



Sports Meet (Fall semester)

Freshmen classes and sophomore seminars in the School of Business Administration compete against each other in three events: volleyball, basketball and mini soccer. There are also exciting softball matches between the students and the faculty team.

Learning Japanese

It takes a great deal of time and effort before international students are capable of participating in classes with Japanese students and fully understanding the course content in Japanese. In addition to improving their general Japanese communication skills (listening, speaking, reading, writing), international students must learn various things about Japan. Meiji University offers the following special course to assist international students to study Japanese.

“Japanese Language Program for International Students: Japanese 1-8”
 Undergraduate exchange students can register for the course. The course is beginner to intermediate level. To register for the course, students are required to take the placement test conducted by the Japanese Language Education Center.



List of Japanese Courses

Course Category	Credit	Course Name		Intended Students	Office Handling the Course
Course Offered by the Student's School	For credit (required, elective required)	Japanese		First and second-year undergraduates	Each school's office
Japanese Language Program for International Students	For credit (elective)	Advanced Japanese	-Comprehensive -Speaking -Writing	First to fourth-year undergraduates	International Student Office (Japanese Language Education Center)
		Japanese 7,8	-Comprehensive -Vocabulary, Grammatical expressions -Listening comprehension -Reading -Speaking -Writing	Exchange students	
		Japanese 4-6	-Comprehensive -Reading -Speaking -Writing		
		Japanese 1-3	-Comprehensive		

Meiji University's Online Learning Materials

Japanese Language Educational Center provides educational contents such as “e-Learning System” and audio/video materials for the incoming exchange students. These contents may help incoming exchange students to know about school life in Japan from the starting line.

URL:
<https://www.meiji.ac.jp/cip/japanesedu/onlinelearning.html>



University Club Activities (Circles)

A “circle” is a group, organization, or club where students with shared hobbies and interests gather to enjoy activities. Meiji University has over 300 officially recognized circles, some of which welcome exchange students and conduct activities in both Japanese and English. For more details, please check here.

<https://www.meiji.ac.jp/campus/circle/6t5h7p000032rh3t-att/a1711085407424.pdf>



Student Life

Accommodation (the nearest station)

Meiji Global Village (@Meidaimae)
 Izumi International House (@Meidaimae)
 Komae International House (@Komae)
 D-PLACE Shimotakaido (@Sakurajosui/Kamikitazawa)
 Dormy Nishikasai 3 (@Nishi-Kasai) *Male students only
 Tokyo Female Students Dormitory (@Nakano Fujimicho)
 *Female students only



Meiji Global Village:
Single room



Izumi International House:
Single room

Living Expenses

Students must pay their own living expenses such as housing, transportation, insurance, student health insurance, textbooks and notebooks.

The example below is an average expense estimate for one month.

Dormitory	¥54,000 - ¥88,000 (Rent is subject to change.)	Phone bills	approximately ¥6,000
Housing facilities outside campus	approximately ¥75,000 or more	Student health insurance (per year)	¥3,000
Transportation	approximately ¥10,000 - ¥20,000	National health insurance (per month)	approximately ¥1,500
Meals	approximately ¥30,000 or more	Books and textbooks	approximately ¥10,000 or more
Utilities (electricity, water, gas)	approximately ¥10,000 or more	Daily necessities	approximately ¥30,000 or more

Campus Mate / SBA Student Supporter / International Lounges



Campus Mate is an international exchange group officially supported by the International Student Center in which you can make friends from around the world by attending a variety of international activities and events. You are expected to enhance mutual understanding through cross-cultural experiences and may be able to make lifelong friends.

https://www.meiji.ac.jp/cip/student_support/campusmate.html



We also have **SBA Student Supporters**, who are students of School of Business Administration volunteering to assist international exchange students. With the help of their supporters, international exchange students can ask questions about classes or course selection, take campus tours, buy commuter passes, set up Wi-Fi and so on.

The International Lounge is open for international students, exchange students and also students wishing to study abroad or make friends from other countries. The lounges are stocked with a wide variety of useful sources of information such as newspapers, magazines, and pamphlets for international students.



Interviews with Exchange Students

1. Why did you choose Meiji (or Japan?) for your study abroad?

A couple of years ago I had the opportunity to experience Japan during a high school exchange. During this time I fell in love with the culture and the country, made many friends, and quickly knew that I wanted to come back one day, if there was a possibility. At my home university, I befriended a handful of exchange students from Meiji who eventually made me decide to spend an exchange semester here at Meiji.

2. What are you studying during the exchange program?

As I am studying international business and management at my home university, the majority of my classes are related to management. Most of them specifically focus on teaching us skills which are valuable in international business settings.

3. How do you like living in Japan and life in Meiji?

Japan is a mesmerizing country with a unique culture. There is so much to explore and learn here and the Japanese people are incredibly welcoming and always happy to lend a helping hand. I have met a lot of lovely people and making friends here at Meiji has been easy both during class as well as at other Meiji events.

4. Message to students who are considering studying abroad.

Japan has so many beautiful places to explore and living as well as attending university here is truly an unforgettable experience. You can learn so much and make incredible friends during your stay here.



Mariela Kasper
 Home University
 University of Applied Sciences
 Osnabrück (Germany)



My timetable

	1 st period	2 nd period	3 rd period	4 th period	5 th period	6 th period
Mon.						
Tue.		Transcultural Management			Top School Seminar (Economics) C	Top School Seminar (Economics) C
Wed.						
Thu.				Strategic Marketing		Top School Seminar (Economics) C
Fri.			Global Issues			Comparative Business Management
Sat.						



Rami Bazan
 Home University
 IE University (Spain)

1. Why did you choose Meiji (or Japan?) for your study abroad?

It was always a dream of mine to go to Japan, it's one of those countries you hear so much about but is so far out of reach that your curiosity does nothing but grow and grow. My exchange at Meiji was the perfect opportunity to finally experience Japan for myself.

2. What are you studying during the exchange program?

Most of my courses revolve around doing business in Japan and Japanese culture. I highly recommend Transcultural Business Management as it brings international and Japanese students together and we speak about our home countries and cultures and how to best deal with each of them in a business setting. I'm also taking the Japanese classes which are such a fun time! I'm still a beginner, our classes are very small (5 students) and the teachers are super nice.

3. How do you like living in Japan and life in Meiji?

Japan has been an amazing experience; I did a big trip with a bunch of my friends in Shizuoka Prefecture and I saw some of the most breathtaking scenery I'd ever seen. The university is super cool too and the Izumi Campus is worth visiting, it's huge and the architecture is just gorgeous.

4. Message to students who are considering studying abroad.

Bond with the other international students, especially if you live in the Meiji dorms. Of course, you should make friends with Japanese students, but exchange and international students have more time and are more interested in going out and exploring Japan, so most of the time they will make even better guides than the locals! Some have been here for a while and know their way around Tokyo. Do your best to leave the house as much as possible and have fun. Bonus points for learning as much Japanese as you can :)

My timetable


	1 st period	2 nd period	3 rd period	4 th period	5 th period	6 th period
Mon.						
Tue.		Transcultural Management	Comprehensive Japanese	Comprehensive Japanese		
Wed.				Contents Business		
Thu.				Business for Social Impact		
Fri.	Innovation Strategy in Japan	Comprehensive Japanese	Comprehensive Japanese			
Sat.						






International Partner Institutions

DATA of SBA

International Partner Institutions of School of Business Administration (As of November 2024)

 CANADA • Gustavson School of Business, University of Victoria	 NETHERLANDS • Rotterdam Business School, Rotterdam University of Applied Sciences
 CHINA • Business School, University of International Business and Economics	 SOUTH KOREA • College of Business Administration, Seoul National University
 FINLAND • Faculty of Social Science and Business Studies, University of Eastern Finland	 SPAIN • IE University
 FRANCE • EXCELIA • IPAG Business School • NEOMA Business School	 THAILAND • Faculty of Economics, Srinakharinwirot University • International College for Sustainability Studies, Srinakharinwirot University
 GERMANY • Faculty of Business Management and Social Sciences, Hochschule Osnabrück University of Applied Sciences	 U.K. • Cardiff Business School, Cardiff University
 HONG KONG • College of Business, City University of Hong Kong	 U.S.A. • Belk College of Business, University of North Carolina Charlotte



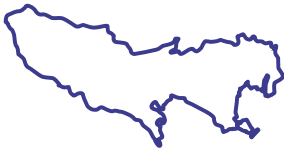
The latest information of partner institutions are on our website.

<https://www.meiji.ac.jp/cip/english/undergraduate/business/exchange/intro.html>

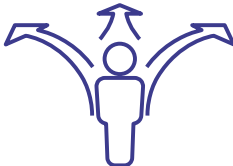




Established in 1953
as the first School of Business Administration at a private university in Japan



Located in the heart of Tokyo



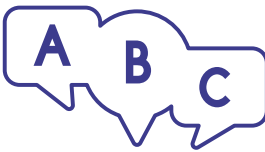
Three departments:
Business Management
Accounting
Public Management



Approx. 3,000 students
Approx. 70 faculty staff

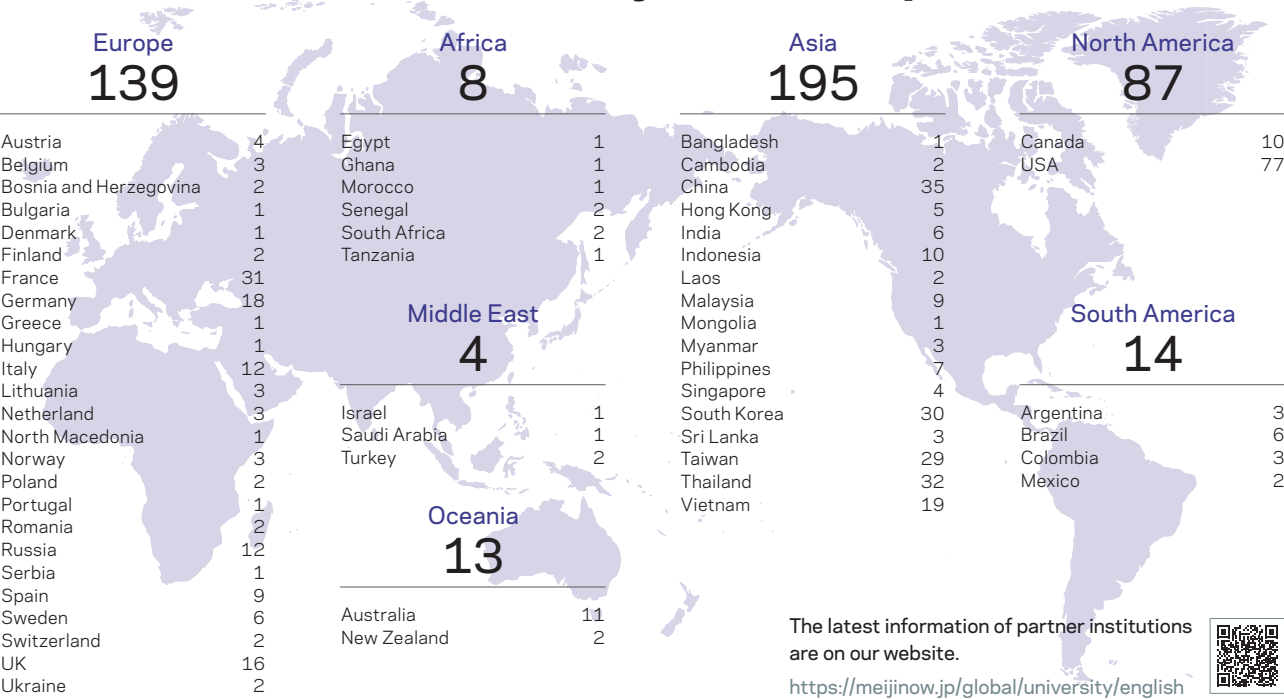


Over 250
International Students

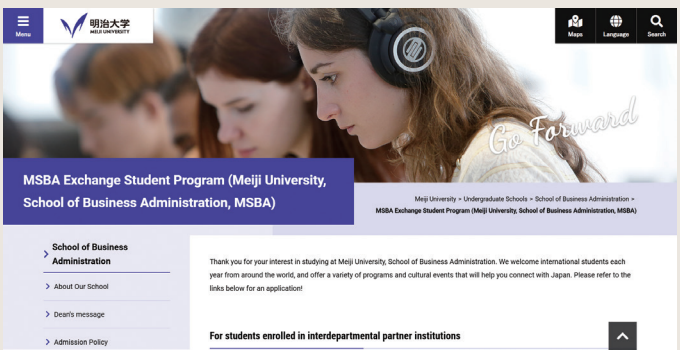


More than 40 courses
offered in English per semester

The Number of Agreements with International Partner Institutions of Meiji University (As of November 2024)



For More Information on the Exchange Program



Visit our website:
<https://www.meiji.ac.jp/cip/english/undergraduate/business/exchange/index.html>

