

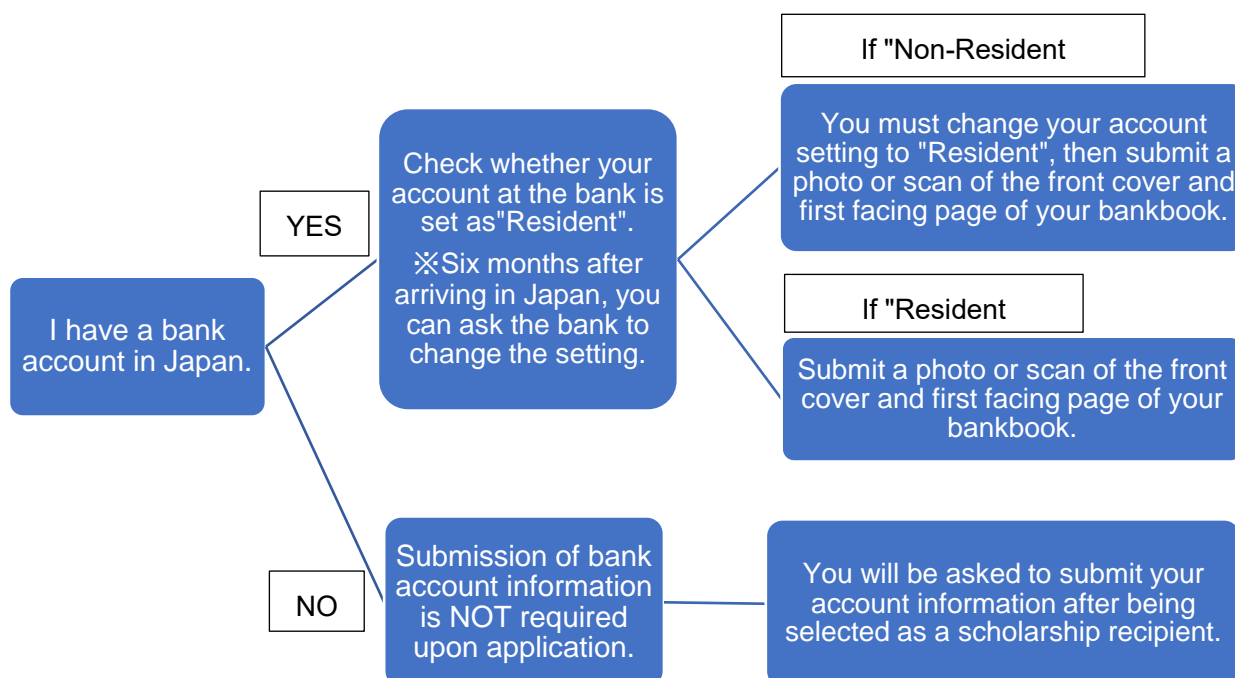
## 【Important】

### Bank Account for Scholarship Transfer to International Students

When you are selected to receive a scholarship, we will transfer the scholarship funds to your bank account in Japan. To transfer money to an international student, it is necessary to make appropriate preparation for the transfer in accordance with the "Foreign Exchange and Foreign Trade Law".

Therefore, please read the following instructions carefully and complete the necessary procedures at the bank before submitting your bank account information when you apply for the Meiji University Scholarship for Privately Financed International Students.

- ◆ **Check with the bank where you opened your account which setting you have for your account, "Resident" or "Non-Resident".**



① **If your bank account setting is "Non-Resident".**

- If you have been in Japan for more than 6 months, you can change your account setting to "Resident".  
**Please be sure to change your account setting to "Resident" at the bank and have the bank erase the "Non-Resident" stamp in your bankbook.**

② **If your bank account setting is already "Resident".**

- No action required. However, if there is a "Non-Resident" stamp in your bankbook, be sure to request the bank to erase it.
- If you are using Internet banking and do not have a bankbook, please inform us at the time of your scholarship application that you have confirmed your account setting as "Resident".

【Inquires】 International Student Office (Scholarships Division)

email: iso@mics.meiji.ac.jp