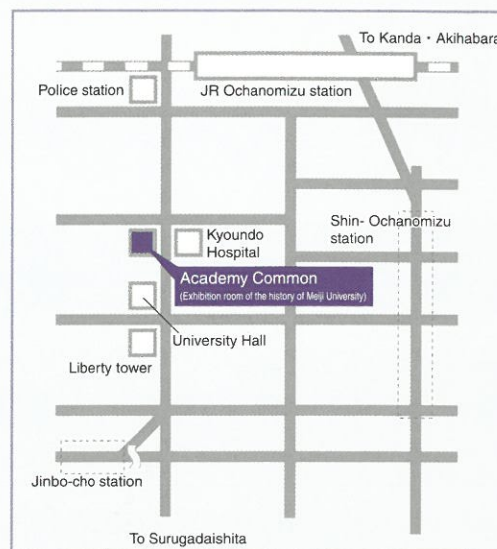


History of Meiji University

- 1881 Jan. Opening of Meiji Law School
- 1903 Aug. The Meiji Law School renamed Meiji University (in accordance with the Vocational School Ordinance)
- 1905 Jul. The University is reorganized as a legal foundation.
- 1911 Oct. Transfer to the current site in Surugadai
- 1912 Apr. Opening of Meiji Junior High School (Current Meiji High School and Junior High School)
- 1920 Apr. University status authorized by University Law
- 1929 Apr. Establishment of a Department of Law for women
- 1934 Mar. Opening of Izumi campus
- 1949 Feb. Reorganization of Meiji University in accordance with School Education Law, and establishment of the School of Law, School of Commerce, School of Political Science and Economics, School of Arts and Letters, School of Engineering and School of Agriculture
- 1950 Mar. Approval of establishment of Two-Year Junior College
- May Opening of Ikuta Campus
- 1951 Mar. University recognized as an Educational Legal Entity
- 1952 Apr. Establishment of the Graduate School
- 1953 Apr. Establishment of the School of Business Administration
- 2004 Apr. Establishment of the School of Information and Communication
- Establishment of the Graduate School of Governance Studies
- Establishment of the Graduate School of Global Business Research
- Establishment of the Law School
- 2008 Apr. Establishment of the School of Global Japanese Studies
- Establishment of the Graduate School of Educational Design
- 2013 Jan. Opening of Nakano campus
- Apr. Establishment of the School of Interdisciplinary Mathematical Sciences

Access Map

- * 3-minute walk from JR Ochanomizu station
- * 8-minute walk from Jinbo-cho station of the Toei Shinjuku Line, Mita Line or Tokyo Metro Hanzomon Line
- * 6-minute walk from Ochanomizu station of the Chiyoda line



Center Office For the History of Meiji University

1-1, Kanda Surugadai, Chiyoda-ku, Tokyo, 101-8301 Japan
 TEL 03 (3296) 4448 FAX 03 (3296) 4365
 URL <http://www.meiji.ac.jp/history/>

We have collected materials on the history of Meiji University. If you have any material or information, please contact the center office for the History of Meiji University (telephone: 03-3296-4448).



Center for the History of Meiji University Exhibition room of the history of Meiji University



MEIJI UNIVERSITY

Establishment and Purpose of the Center

The Center for the History of Meiji University was established in April 2003 for use of materials collected by the compilation of the "100 Years of Meiji University History" (years 1986 to 1994) and the survey, research, collection, storage and publication of materials regarding the history of Meiji University.

Introduction

Meiji University was founded as the Meiji Law School near Sukiwabashi, Yuraku-cho, Tokyo in January, 1881 (or 14th year in the Meiji Era). The history is compared to the modern history of Japan with a series of difficulties. To find solutions to the problems in the very difficult situations, joint efforts were made among the faculty, the students and the alumni; it was indeed "cooperation for the common cause". And Meiji University is guided to the present under the founding philosophy of "Rights and Liberty".

The history of Meiji University is now accessible here at the standing exhibition of the symbolic articles and references. Hopefully many visitors will have the opportunity to look back to the rich tradition of the university and gain the source of strength to open up the future.

The Symbol of MEIJI University

Three founders



矢代 操
Misao YASHIRO



岸本辰雄
Tatsuo KISHIMOTO



宮城浩蔵
Kozo MIYAGI

The Campus Life Experience

Classrooms and dormitories mainly in Showa era are reproduced. Please enjoy experiencing university life during that period.



This exhibits distinguished events and achievement in the history of Meiji University.

The Cross-section-the Meiji University History

History of Meiji University

This exhibits the chronological order of the history of Meiji University from its beginning.



1870~1880

The Meiji Law School Founded



early 1940s

WW II and Meiji University

1880s~1910s

The Time of Challenges



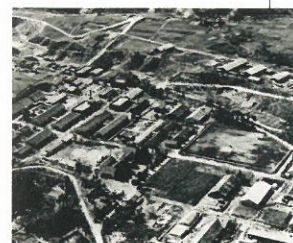
1945~1970s

The Post-War Recovery and Reform



1920s~1930s

The Promotion to the Meiji University



The Izumi and Ikuta Campuses

