

## Software installation manual for VPN connection service

This manual describes how to install Pulse Secure, the software used for the Meiji University VPN connection service.

The example procedure is for Windows 10 and Internet Explore.

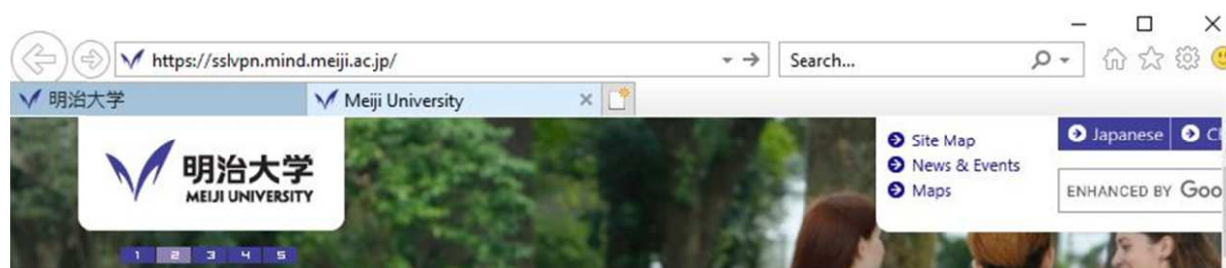
You only have to install it once.

### 1. Start IE.

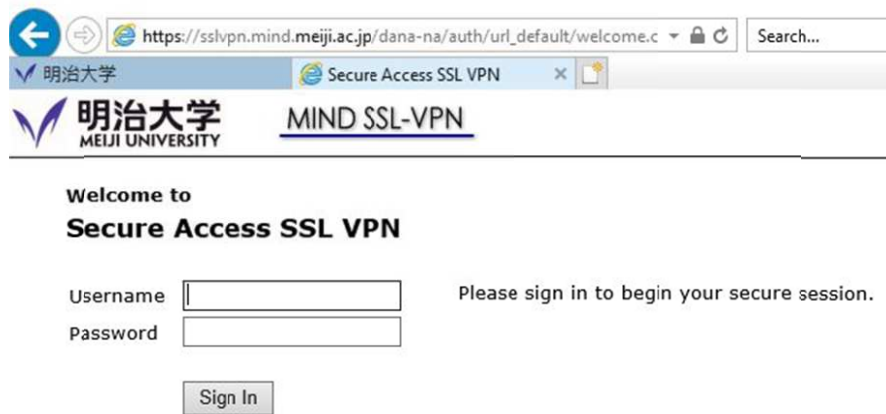


### 2. Open the VPN connection service site.

URL <https://sslvpn.mind.meiji.ac.jp>

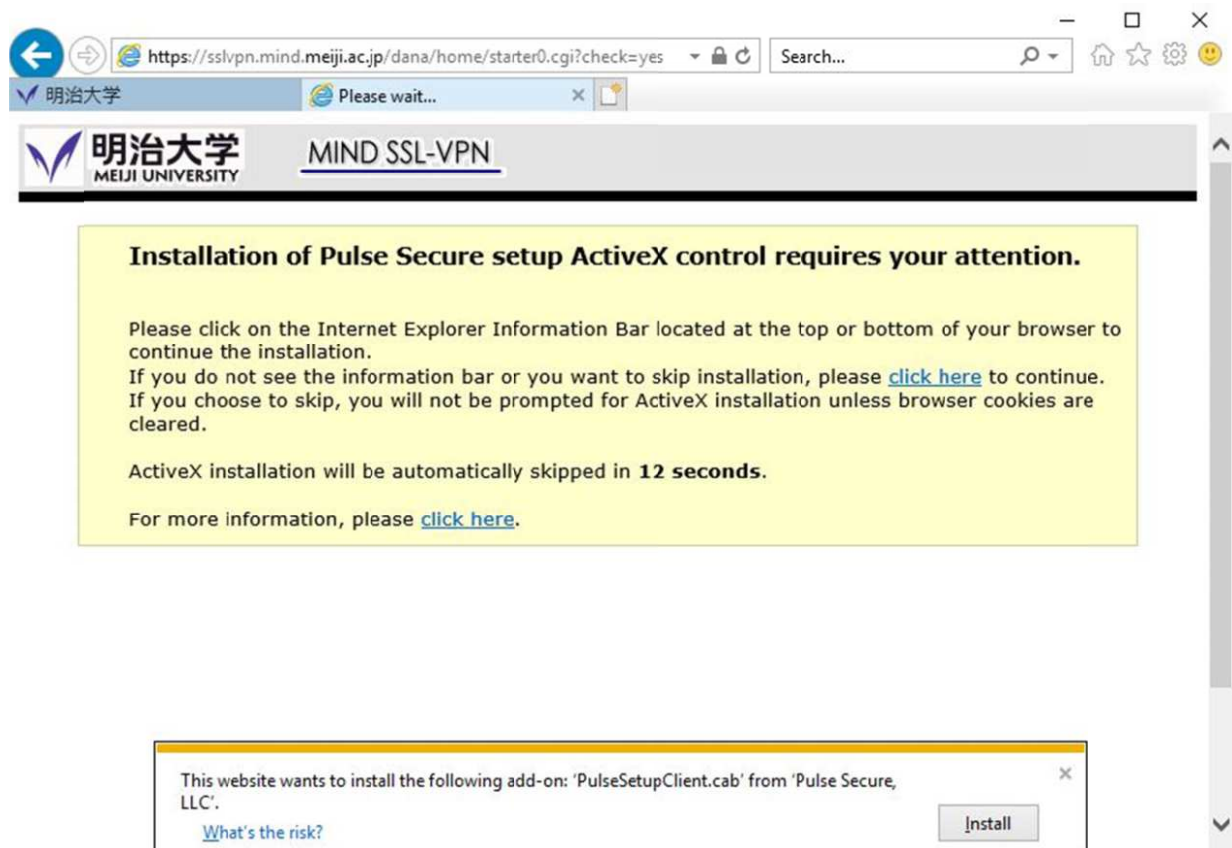


3. Log in with Meiji University integrated authentication.



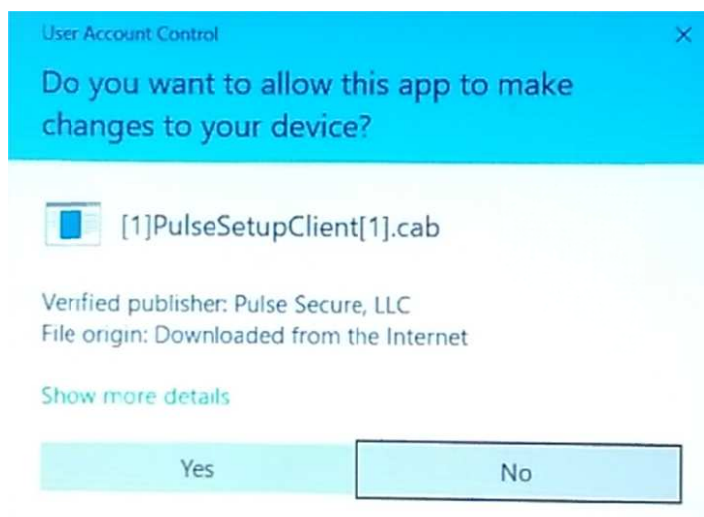
The screenshot shows a web browser window with the URL [https://sslvpn.mind.meiji.ac.jp/dana-na/auth/url\\_default/welcome.c](https://sslvpn.mind.meiji.ac.jp/dana-na/auth/url_default/welcome.c). The page header includes the Meiji University logo and the text "MIND SSL-VPN". Below the header, the text "Welcome to Secure Access SSL VPN" is displayed. There are two input fields: "Username" and "Password". To the right of these fields, the text "Please sign in to begin your secure session." is shown. A "Sign In" button is located below the password field.

4. If a dialog box for adding an add-on is displayed, install it.



The screenshot shows the same web browser window as before, but the URL is now <https://sslvpn.mind.meiji.ac.jp/dana/home/starter0.cgi?check=yes>. The page header is the same. A large yellow warning box is displayed in the center of the page. The text inside the box reads: "Installation of Pulse Secure setup ActiveX control requires your attention. Please click on the Internet Explorer Information Bar located at the top or bottom of your browser to continue the installation. If you do not see the information bar or you want to skip installation, please [click here](#) to continue. If you choose to skip, you will not be prompted for ActiveX installation unless browser cookies are cleared. ActiveX installation will be automatically skipped in 12 seconds. For more information, please [click here](#)." Below the warning box, a small dialog box is displayed. The dialog box contains the text: "This website wants to install the following add-on: 'PulseSetupClient.cab' from 'Pulse Secure, LLC'." and a link "[What's the risk?](#)". There is an "Install" button in the dialog box.

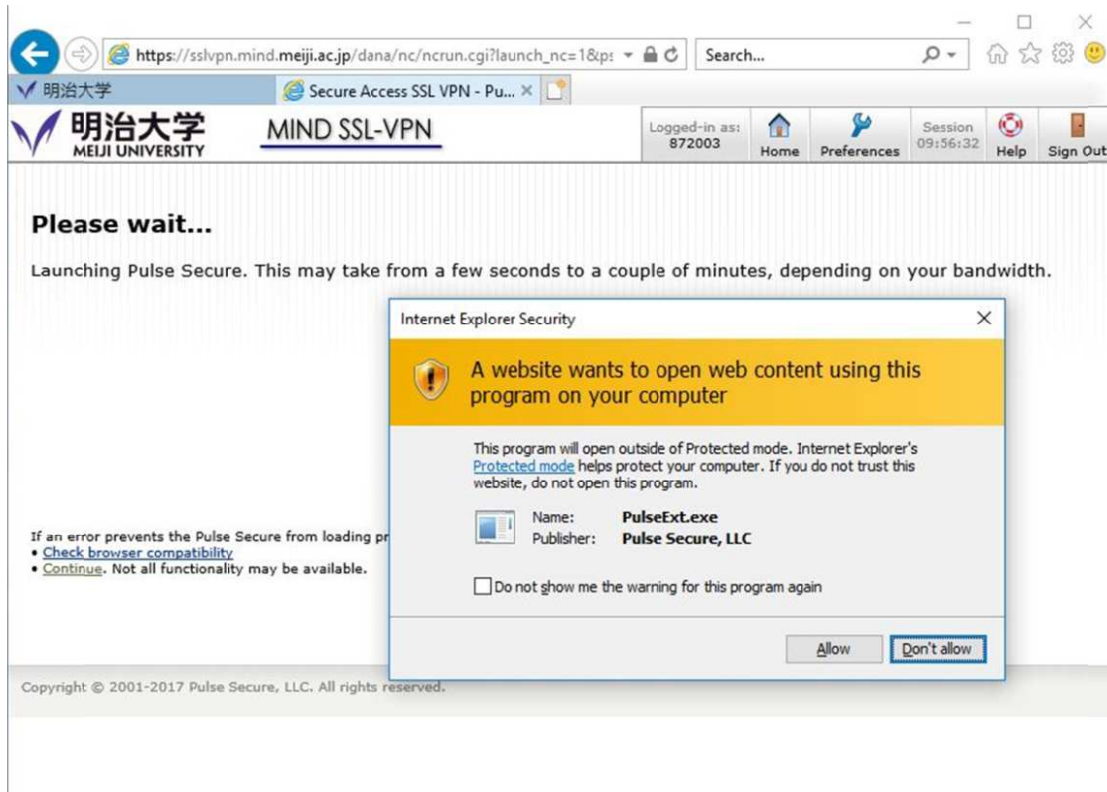
5. Click yes in the next dialog.



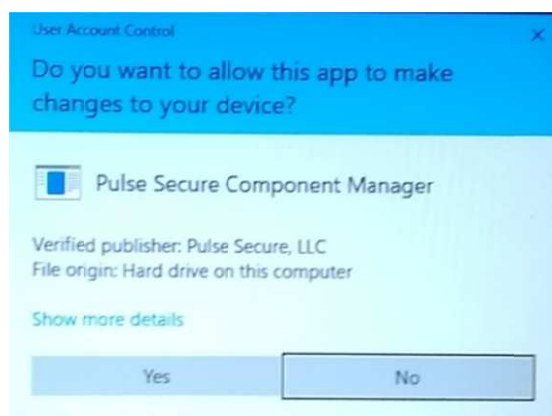
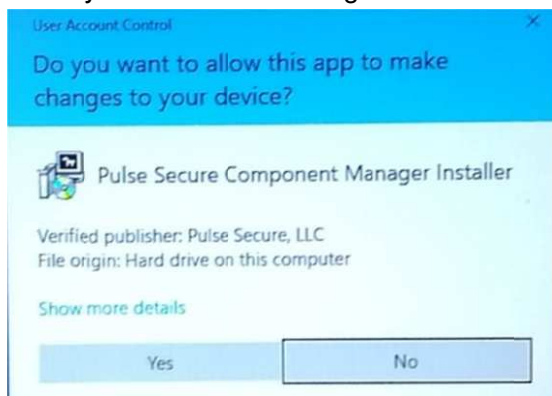
6. Click the Pulse Secure start button.



7. Click allow in the next dialog.

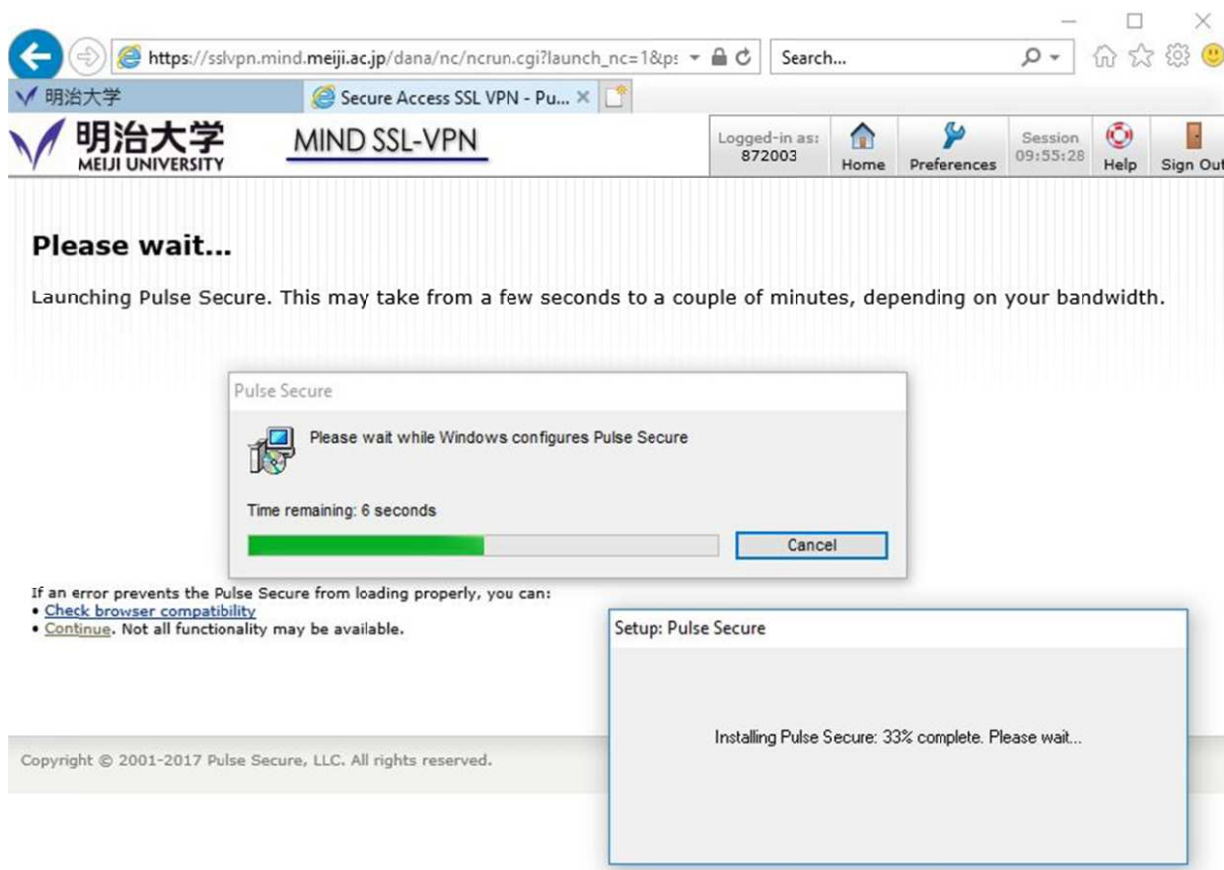


8. Click yes in the next dialogs.



9. If the "Setup Control-Caution" screen appears in the center of the screen, click [Always].

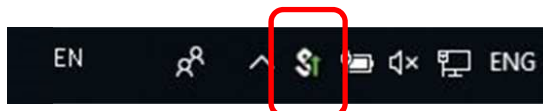
10. Pulse Secure installation will begin.



11. When the installation is complete, Pulse Secure will start.



An icon appears on the taskbar.



This completes the installation of Pulse Secure.

From the next time, when you start the PC, Pulse Secure will be started automatically.

To use the VPN connection service, right-click the Pulse Secure icon, connect to SA (sslvpn.mind.meiji.ac.jp), and authenticate. Alternatively, open the Pulse Secure screen, click Connect, and authenticate.