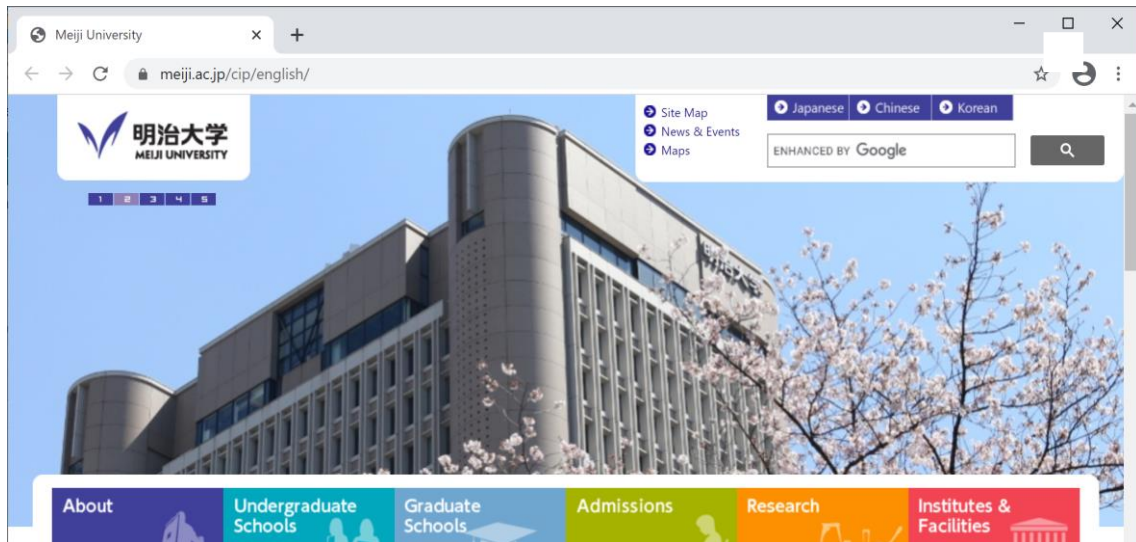


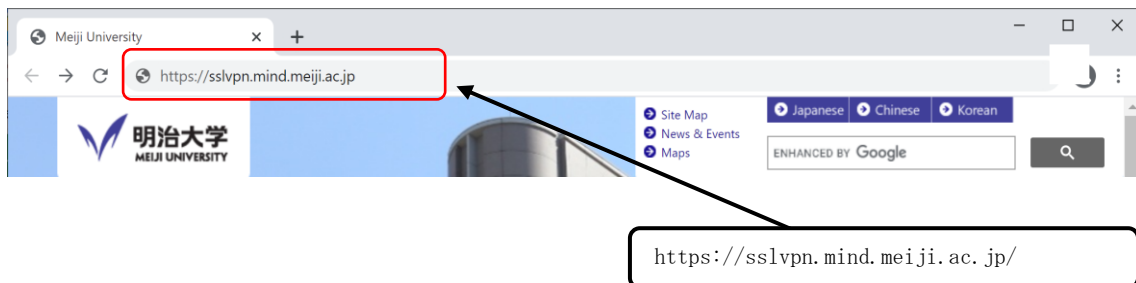
Software installation manual
for VPN connection service
(Windows10 Google Chrome)

This manual describes how to install Pulse Secure, the software used for the Meiji University VPN connection service at **Google Chrome**.
You only have to install it once.

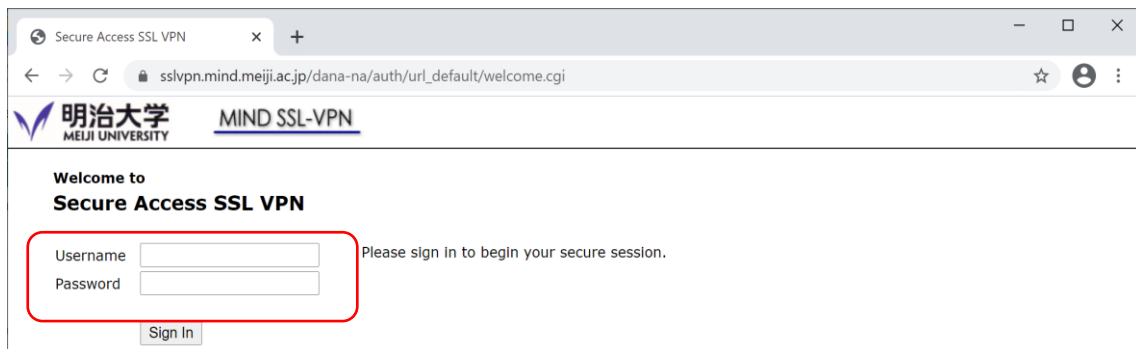
1. Launch Google Chrome.



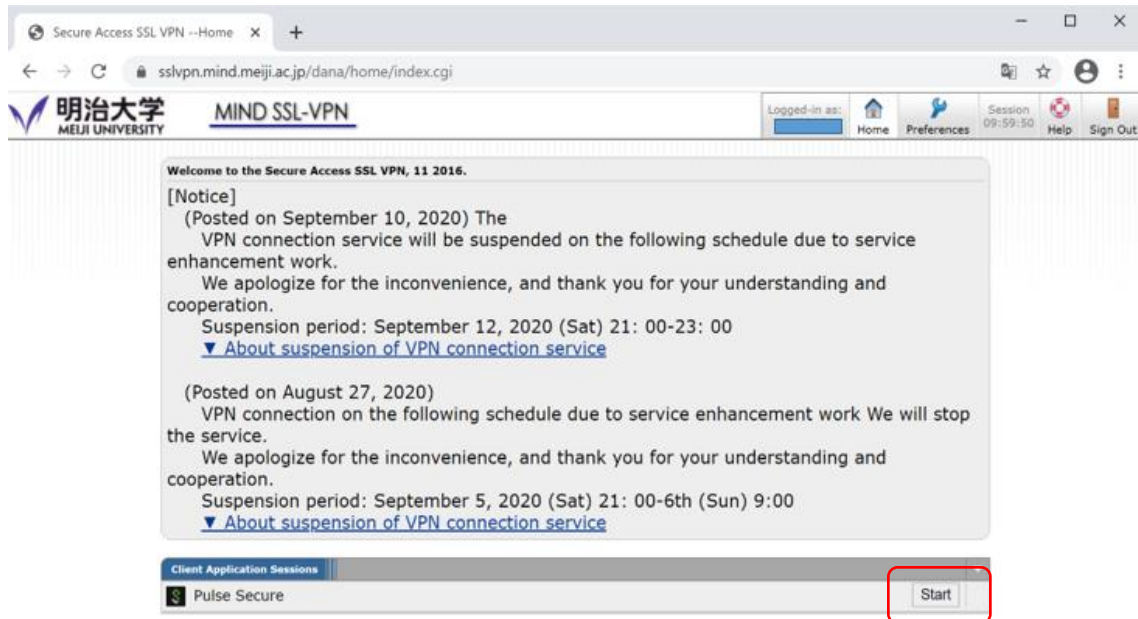
2. Open the VPN connection service site.



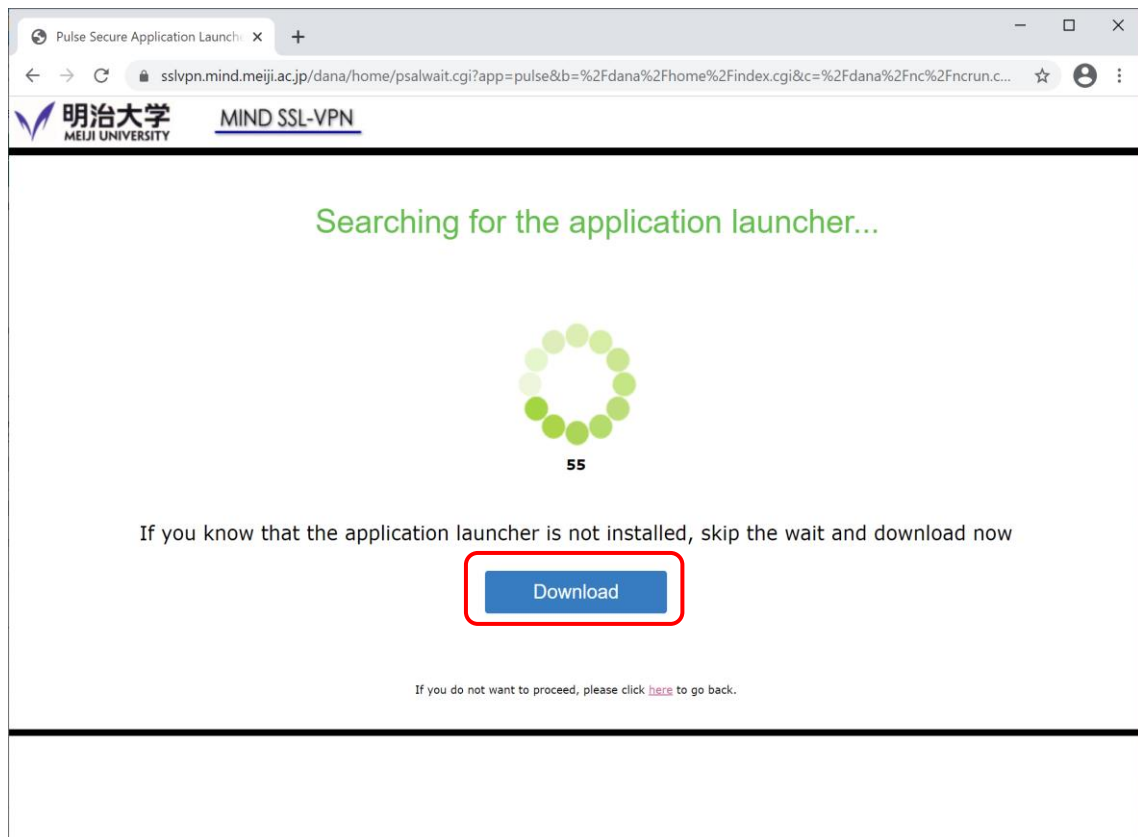
3. Log in with Meiji University integrated authentication.



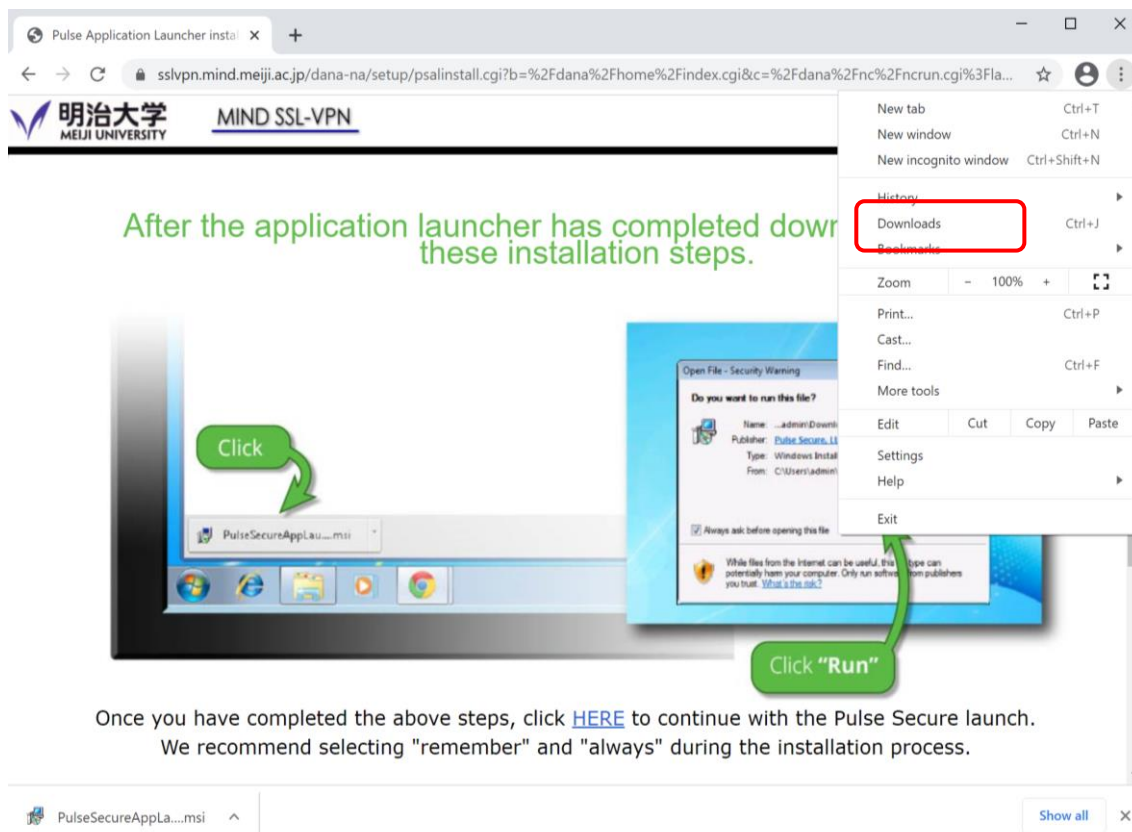
4. Click the Pulse Secure "start" button.



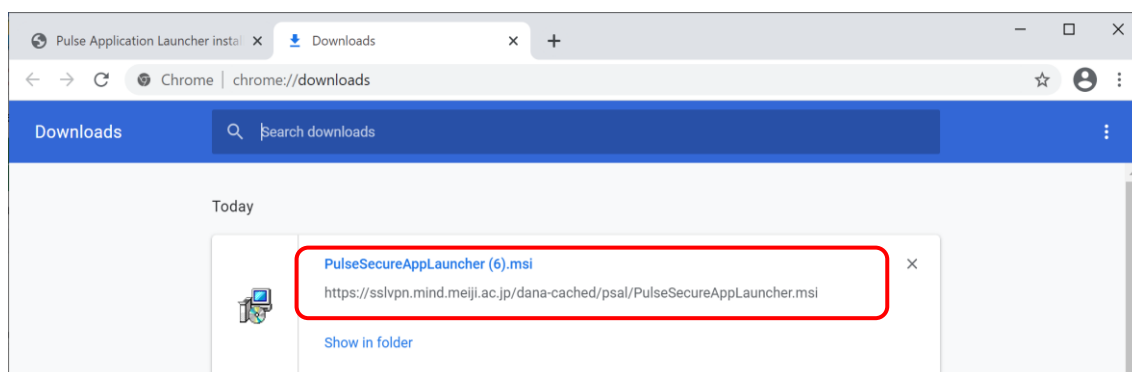
5. You will be taken to the download screen of the application launcher.



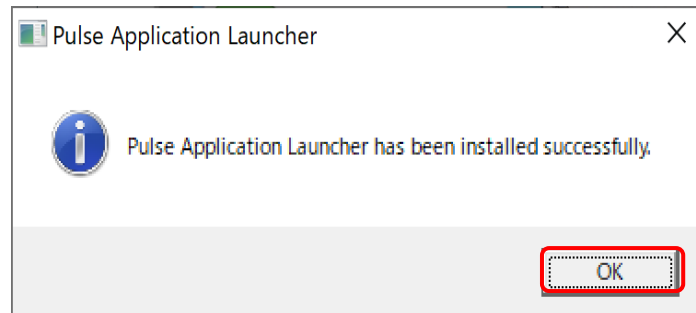
6. "PulseSecureAppLauncher.msi" will be downloaded. The pull-down menu in the upper right corner will be displayed and click "Download" in the menu.



7. Click the file "PulseSecureAppLauncher.msi" to run it.



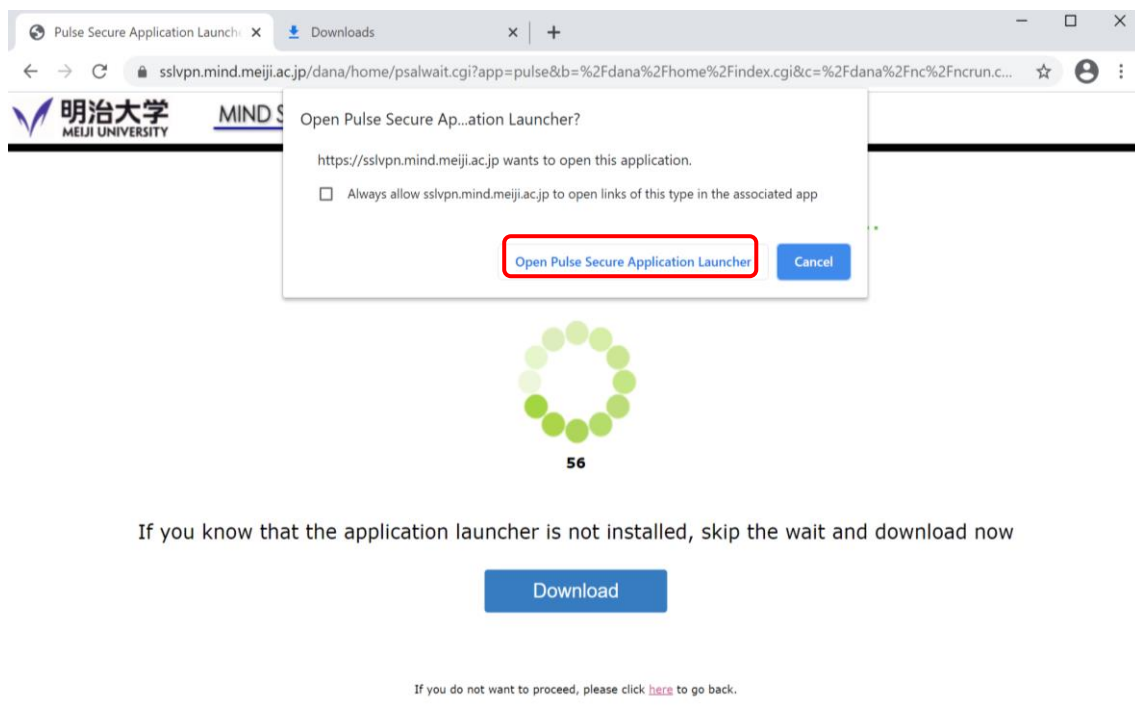
8. Click “OK”.



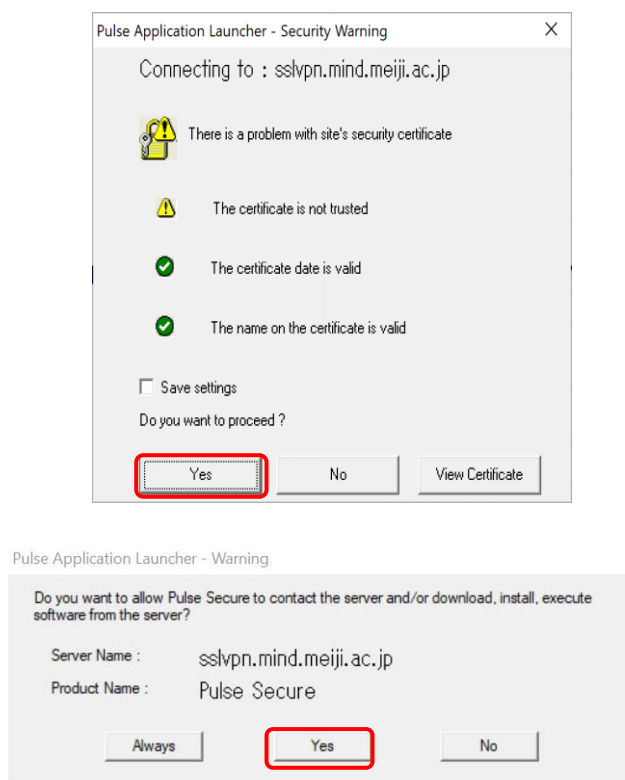
9. Return to the download page and click “Here” to run the application launcher.

A screenshot of a web browser displaying the "MIND SSL-VPN" page from Meiji University. The page has a header with the university's logo and name. The main content area contains green text: "After the application launcher has completed downloading, follow these installation steps." Below this text is a composite image showing a Windows desktop. On the desktop, a file named "PulseSecureAppLau...msi" is in the Downloads folder. A green arrow labeled "Click" points to this file. Another green arrow labeled "Click 'Run'" points to the "Run" button in a Windows "Open File - Security Warning" dialog box that is open over the file. The dialog box shows details about the file and has "Run" and "Cancel" buttons. Below the composite image, there is a paragraph of text: "Once you have completed the above steps, click [HERE](#) to continue with the Pulse Secure launch. We recommend selecting 'remember' and 'always' during the installation process." The word "HERE" is enclosed in a red rectangular box. At the bottom of the page, another line of text states: "Once the Pulse Secure application is installed and started it will appear in your system tray."

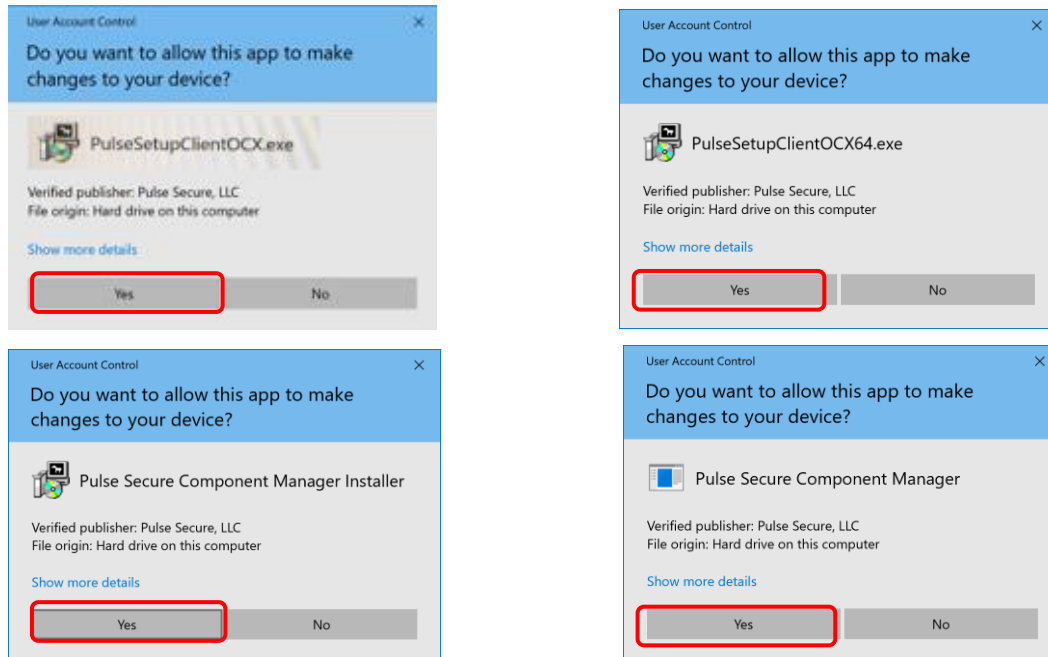
10. The popup will appear. Click "Open Pulsu Secure application launcher ".



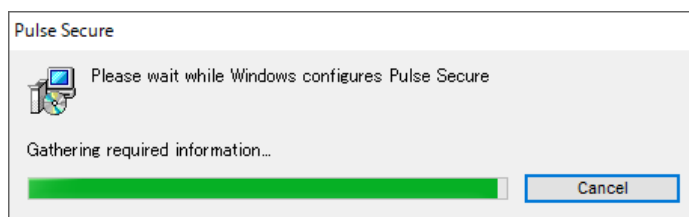
11. When the security warning popup appears, click "Yes".



12. Click “yes” as shown in the following dialog box.



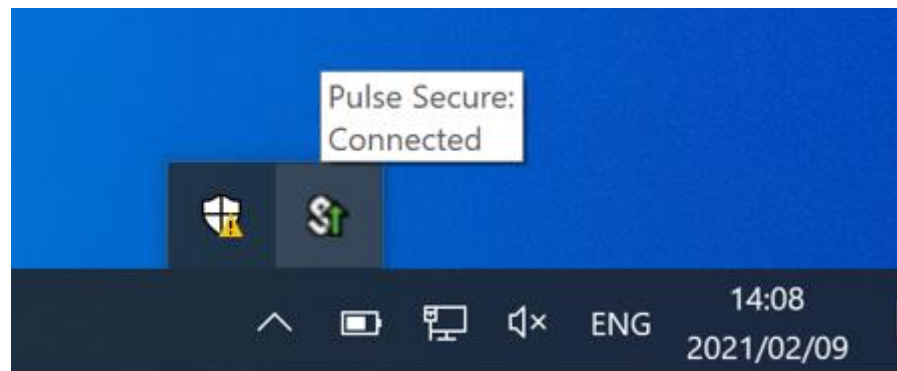
13. The Pulse Secure booting screen appears



14. The Pulse Secure boot screen appears.



15. The "Pulse Secure" icon appears on the taskbar and the message "Connected" appears.



The installation of Pulse Secure is completed.

From the next time, when you start the PC, Pulse Secure will be started automatically.

support desks

<https://www.meiji.ac.jp/mind/en/support/office.html>

Surugadai Support Desk	7F, Building No.12	03-3296-4286	Opening hours (Class day) Mon.– Fri. 8:30 – 19:30 Sat. 8:30 – 14:00
Izumi Support Desk	1F, Media Building (at media service counter)	03-5300-1190	
Ikuta Support Desk	5F, Main Building	044-934-7711	
Nakano Support Desk	4F, Low-Rise Wing	03-5343-8072	