



MIND Introductory Course Flow



- **MIND stands for Meiji University Integrated Network Domain, a network maintained by Meiji University.**

- **In the MIND Introductory Course, two topics will be covered through a total of five videos.**
 - **Topic 1: Learning about information security**
 - ① Passwords: Why are they important? How do you protect them?
 - ② Trying to take over one way or another. -Multi-Factor Authentication-
 - ③ Heavy Loss from Emails!? Beware of Attachments and Links

 - **Topic 2: Learning about Fraud**
 - ① Is that YOUR report? – Using and Quoting Literary Works -
 - ② No, definitely! Cheating on Reports



- ❑ **The course contains very important information on the use of information services. This is an opportunity to make sure you understand it properly.**

- ❑ **To complete The course, watch the course video and obtain a perfect score on the confirmation quiz.**

- ❑ **Upon completion of this training course, you will be able to:**
 - Connect to Internet from PCs located on campus.
 - Connect your own smartphone or PC to MIND and use various services, including Internet.

Note: New students may use the Internet and connect to MIND for a certain period of time as a grace period, even if they have not taken the course yet.

- ❑ **In addition to these videos, there are other videos available for optional attendance. If you have time, please watch them. (Optional videos will not affect your course status.)**



- ❑ **In the following situations, it will not be considered as completed.**
 - You haven't watched the video to the end.
 - You skipped part of the video. (Fast-forward playback is allowed.)
 - The confirmation quiz does not have a perfect score.

- ❑ **It may take 2 to 3 business days from the completion of the course until Internet access or MIND connection service becomes available.**



Let's begin the MIND Introductory Course!



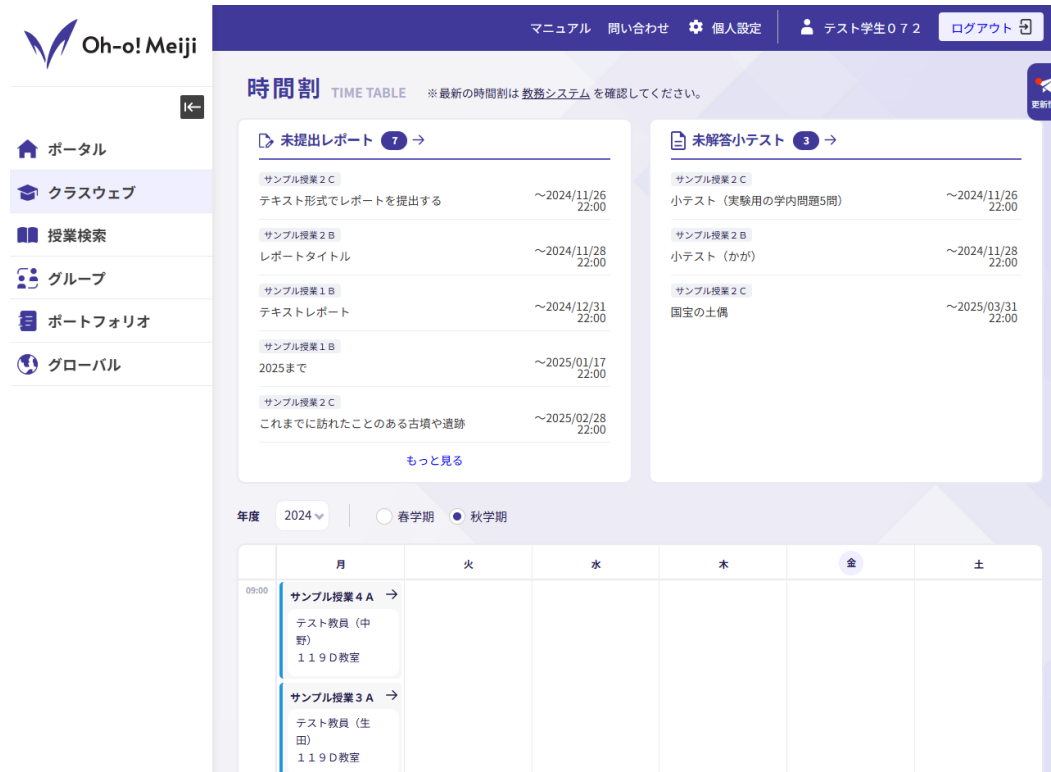
Information Services and Security at Meiji University



In the previous videos you've learned about "password protection", "Multi-Factor Authentication" and "risks of opening email attachments and links".

Now, let's learn about information services available at Meiji University and about network security.





The screenshot displays the 'Oh-o! Meiji' educational support system interface. The top navigation bar includes links for 'マニュアル' (Manual), '問い合わせ' (Contact), '個人設定' (Personal Settings), 'テスト学生 072' (Test Student 072), and 'ログアウト' (Logout). The main content area is titled '時間割 TIME TABLE' and includes a note: '※最新の時間割は教務システムを確認してください。' (Please check the latest time table in the administrative system). The interface is divided into two main sections: '未提出レポート 7 →' (Unsubmitted Reports 7) and '未解答小テスト 3 →' (Unanswered Quizzes 3). Below these are lists of assignments and quizzes with their respective due dates and times. At the bottom, there is a section for '年度' (Year) set to '2024' and '学期' (Semester) set to '秋学期' (Autumn Semester). A table shows the course schedule for the week, with '月' (Monday) having two classes: 'サンプル授業 4 A' and 'サンプル授業 3 A', both in room 119D at 09:00.

年度	2024	春学期	秋学期		
月	火	水	木	金	土
09:00	サンプル授業 4 A → テスト教員 (中野) 119D教室 サンプル授業 3 A → テスト教員 (生田) 119D教室				

This is Meiji University educational support system. It's an essential platform for students which allows them to check course materials, submit assignments and receive announcements from the university. It plays a crucial role in students' university life.



Meiji Mail

This is Meiji University email service available for students from the time of enrollment. It is automatically set up for all students upon enrollment, so there is no need for application. You can start using it right away.



Currently enrolled students can install and use software provided by Microsoft such as Word, PowerPoint, and Excel for free. (Please note that there may be limitations or conditions regarding the usage period.)



You can connect your personal laptop and smartphone to the university wi-fi network. To access the university wi-fi network (which is commonly called “MIND network”), it is necessary to complete this MIND Introductory Course.



At each campus's PC Study Room, PCs are available for writing reports, printing course materials and accessing email.



Certificate issuing machines allow you to issue various certificates, including student discount certificates. Additionally, you can use the Service of off-campus certificate issuance, which allows you to obtain certificates at convenience store multi-function copiers.



▣ The First Step:

Confirm your Meiji ID and change the initial password.

"Meiji ID" is an account issued to each individual upon enrollment. The ID is either "10-digit student number@meiji.ac.jp" or just the "10-digit student number", it may or may not require "@meiji.ac.jp." depending on the service being used. The initial password is the one set during the enrollment process.



Please make sure to change the initial password to a different one on the following website!!!

URL: <https://sso.meiji.ac.jp/rp/dfw/idm/webmtn/LoginServlet>





▣ The Second Step:

Set up Multi-Factor Authentication for your Meiji ID / Meiji Mail Account

For using services that require "Meiji ID" from off-campus, Multi-Factor Authentication must be set up in advance to enhance security.

During the initial enrollment period for new students, there is a grace period when services can be used without Multi-Factor Authentication being set up.



If Multi-Factor Authentication is not set up, essential services such as Oh-o! Meiji and course registration will become completely inaccessible from outside the university. Be sure to complete the setup.

Please refer to the manual and usage instructions below for setting up Multi-Factor Authentication.

<https://www.meiji.ac.jp/isc/id/>





□ Oh-o! Meiji

You can use it by logging in with your Meiji ID (with “@meiji.ac.jp”).

URL: <https://www.oh-o.meiji.ac.jp>

□ Meiji Mail

You can use it by logging in with your ID (Meiji Mail address) and password, after setting up Multi-Factor Authentication. You can check your own email address at Oh-o! Meiji.

URL: <https://outlook.office365.com>

□ Microsoft EES

You can install Microsoft Office products on personally-owned PCs, tablets and other devices. Authentication with your Meiji Mail ID is required for downloading and using them. Also, the setup for Multi-Factor Authentication has to be completed.

URL: <https://www.meiji.ac.jp/isc/msca/of365.html> (Japanese only)



□ **Wi-Fi**

If you have completed the MIND Introductory Course, you can use it. To connect to the university Wi-Fi, you will need your Meiji ID (without “@meiji.ac.jp”).

□ **Media classroom / PC Study Room**

If there are vacant seats, you can freely use PCs there. To log in to the PC, you will need your Meiji ID (without “@meiji.ac.jp”).

Note: Only at Ikuta Campus, “Basic Service Account” is required (Meiji Mail address without “@meiji.ac.jp”).

□ **Certificate issuing machines /Service of off-campus certificate issuance**

Certificate issuing machines : You will need your student ID card and Meiji ID password.

Service of off-campus certificate issuance : To use it, you will need to log in to the dedicated website with your Meiji ID (with “@meiji.ac.jp”) and to make an application. (Please note that student discount certificates cannot be issued through this service.)

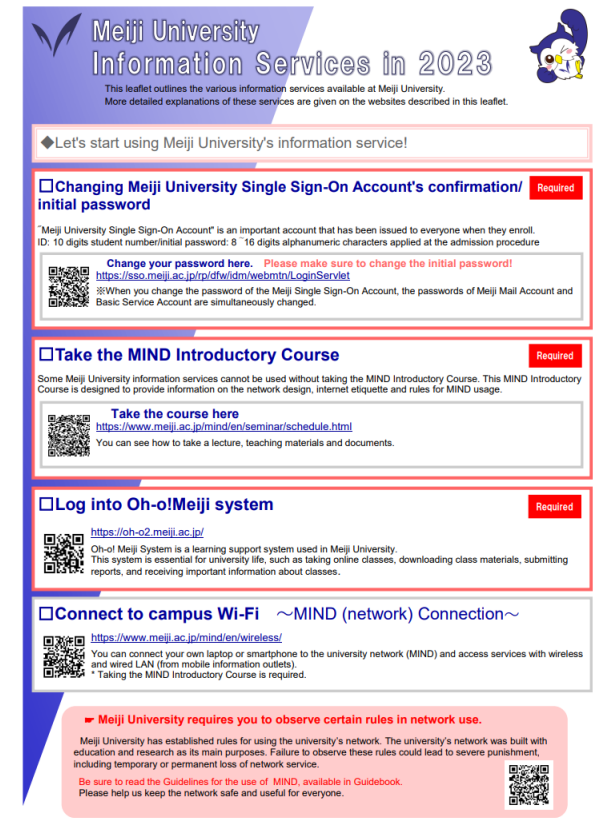
- You can find the information on the following websites and in distributed materials. Make sure to check thoroughly and make the most of Meiji University information services!

① Guide for using information services (MIND Leaflet)

Distribution Locations:

Support Desk, Media Support Office, Faculty Offices, etc.

Website : <https://www.meiji.ac.jp/mind/en/MINDLeaflet.html>



Meiji University Information Services in 2023
This leaflet outlines the various information services available at Meiji University.
More detailed explanations of these services are given on the websites described in this leaflet.

◆Let's start using Meiji University's information service!

- Changing Meiji University Single Sign-On Account's confirmation/initial password** Required
Meiji University Single Sign-On Account is an important account that has been issued to everyone when they enroll.
10 digits student number/initial password: 8 16 digits alphanumeric characters applied at the admission procedure
Change your password here. Please make sure to change the initial password!
<https://aso.meiji.ac.jp/sof/wisdm/webmin/Login/Service/>
※When you change the password of the Meiji Single Sign-On Account, the passwords of Meiji Mail Account and Basic Service Account are simultaneously changed.
- Take the MIND Introductory Course** Required
Some Meiji University information services cannot be used without taking the MIND Introductory Course. This MIND Introductory Course is designed to provide information on the network design, internet etiquette and rules for MIND usage.
Take the course here
<https://www.meiji.ac.jp/mind/en/seminar/schedule.html>
You can see how to take a lecture, teaching materials and documents.
- Log into Oh-o!Meiji system** Required
<https://oh-o2.meiji.ac.jp/>
Oh-o! Meiji System is a learning support system used in Meiji University.
This system is essential for university life, such as taking online classes, downloading class materials, submitting reports, and receiving important information about classes.
- Connect to campus Wi-Fi ~MIND (network) Connection~**
<https://www.meiji.ac.jp/mind/en/wireless/>
You can connect your own laptop or smartphone to the university network (MIND) and access services with wireless and wired LAN (from mobile information outlets).
* Taking the MIND Introductory Course is required.

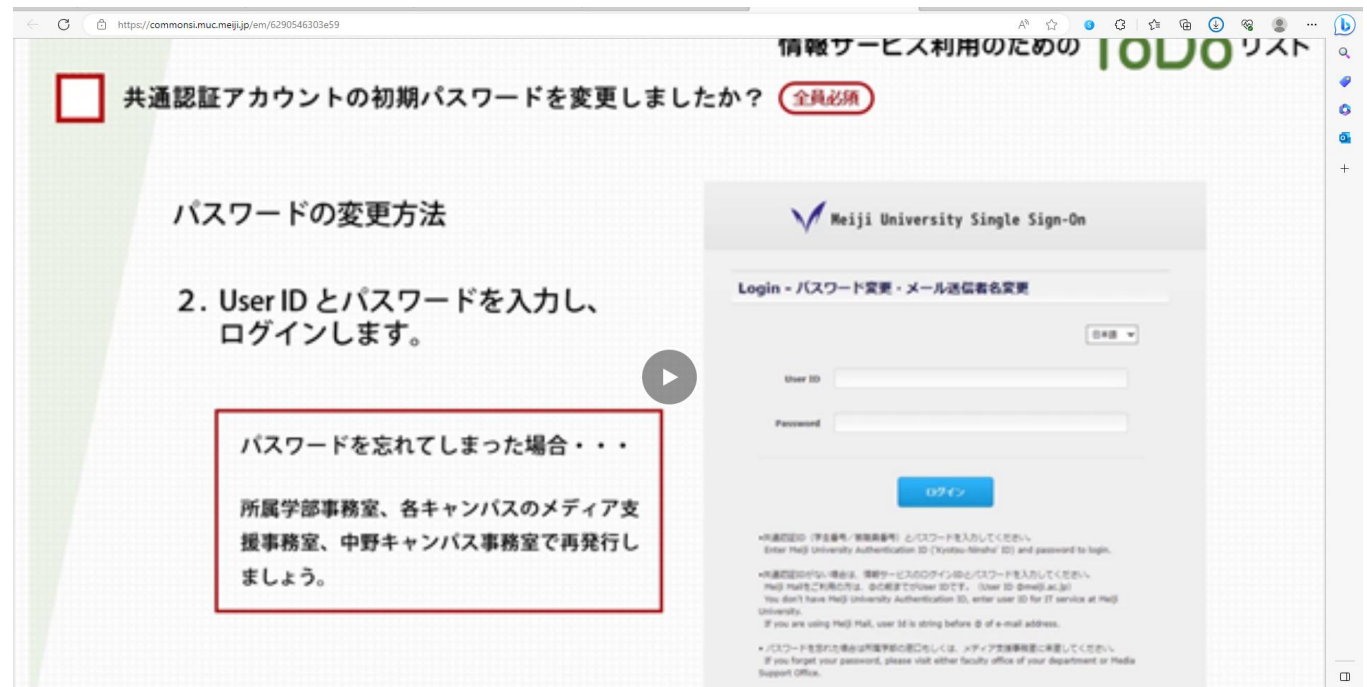
→ **Meiji University requires you to observe certain rules in network use.**
Meiji University has established rules for using the university's network. The university's network was built with education and research as its main purposes. Failure to observe these rules could lead to severe punishment, including temporary or permanent loss of network service.
Be sure to read the **Guidelines for the use of MIND**, available in Guidebook.
Please help us keep the network safe and useful for everyone.

② To-Do List for Using Information Services

It's an easy to understand video about the preparations necessary for using information services.

You can watch it on the official Meiji University website.

URL: <https://www.meiji.ac.jp/wsys/it/todo.html> (Japanese only)





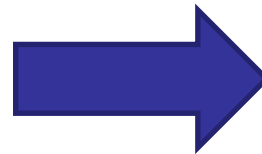
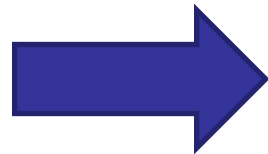
□ What is Multi-Factor Authentication ?

It is a system that uses methods other than just an ID and password, such as authentication codes sent to your smartphone, or biometrics like fingerprints, to verify the user's identity when using the service.

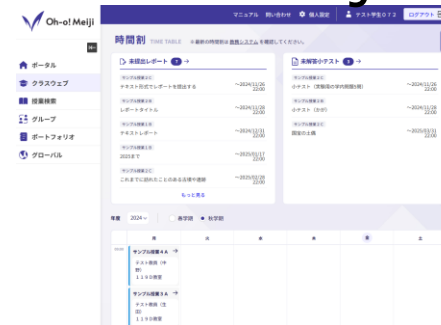




- For using services that require “Meiji ID” or “Meiji Mail account” from off-campus, **you must set up “Multi-Factor Authentication” in advance.**
(Example: When you want to use Oh-o!Meiji from home)



Oh-o!Meiji



ID + **Password** + **Multi-Factor Authentication**



- If you have problems with information services or digital security, please try contacting the Support Desk.



Surugadai Support Desk	Bldg.12,7F	03-3296-4286	<p>Open (school days) Mon-Fri 8:30 ~ 19:30 *Ikuta Campus only: 8:30~19:00</p> <p>Sat 8:30 ~ 14:00</p> <p>※Closed on Sundays, national holidays and university holidays. ※Please check the website for opening hours during summer and spring breaks, special holidays and temporary closures.</p>
Izumi Support Desk	Media Bldg., 1F	03-5300-1190	
Ikuta Support Desk	Main Bldg., 5F	044-934-7711	
Nakano Support Desk	Low Bldg., 4F	03-5343-8072	



The explanation regarding Meiji University information services and security ends here. Next, we will learn about copyrighted materials, their use and citation.

**Only a few more steps left.
You can do it!**

おつかれさま





Guidelines and Conditions for Using MIND



- ❑ **This guideline provides a simplified explanation of the compliance rules specified in Article 7 of the MIND Usage Standards. For more details, access and read the URL or QR code that will be presented at the end.**
- ❑ **Please make an effort to thoroughly understand the guidelines and strive for conscientious use of MIND as a member of Meiji University.**





❑ In MIND, the following actions are prohibited as unauthorized use.

- ① Using MIND while impersonating someone else and promoting such behavior.
- ② Handling information that unjustly infringes upon the rights of others or has content that violates public order and morality.
- ③ Engaging in unauthorized handling of information protected by intellectual property rights.
- ④ Using it for purposes other than education, research, and their support.
- ⑤ Using it for commercial purposes.
- ⑦ Engaging in usage that disrupts the operation of MIND.

If you engage in unauthorized use...





Strict measures such as suspension of use or revocation of usage privileges will be taken!

- ❑ Course registration/application through the web
- ❑ Identification certificate dispensers
- ❑ Oh-o!Meiji service
- ❑ Use of MIND for classes, research, etc.
- ❑ Computers installed in classrooms and study rooms.
- ❑ The OPAC in each campus library.
- ❑ Electronic books, electronic journals, and databases provided by the library.
- ❑ Internet access on your own PC in campus.
- ❑ All services utilizing the university's email and other MIND services.



You will lose access to all of them!



MIND, unlike regular internet service providers, prohibits usage for purposes other than 'education, research, and their support'.



X Games, entertainment, and hobbies



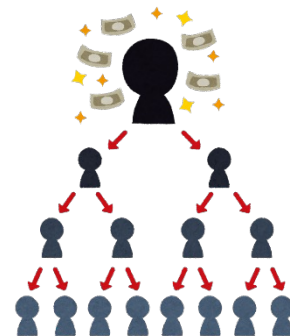
X Political activities



X Profit purposes
(such as setting up an online shopping website)



X Propagating a specific religion



X Activities resembling pyramid schemes



X Operating dating websites



□ Protection of communication secrecy and privacy.

In MIND, you can exchange information using tools like email. However, **it is not allowed to view the contents of someone else's email without their consent or disclose the contents of an email to others without the sender's permission.**



□ Proper use of the system - 1

MIND is a highly functional network system. To ensure the smooth operation of the system, it is essential that the underlying computer systems supporting MIND function securely. The most significant threat to system security is malware, such as computer viruses. **It's important not to open attachments from unknown sources or forward emails from unknown senders without caution.**



□ Proper Use of the system - 2

Sending and receiving a large number of emails without considering the presence of other users or the system's load can also hinder the smooth operation of the system. **Continuing to connect your device to the network because it's hard to get a connection or monopolizing entry points like VPN connections can also worsen the overall system connectivity.**

□ Actions Contrary to Social Norms

Defamation, character assassination, personal attacks driven by emotions, unjust discrimination, stalking, and similar actions on the network are **strictly prohibited** and not acceptable.

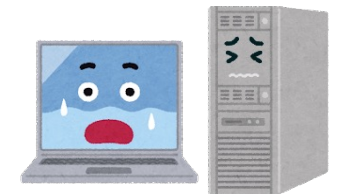




□ Measures for Violation of Compliance Rules

Users who do not follow MIND's compliance rules may face consequences such as the cancellation, suspension, or modification of their usage privileges, as well as other educational measures. While the measures are being determined, access may be temporarily suspended or restricted. When the suspension of usage privileges is decided, the suspension remains in effect until it is lifted, and the user cannot access MIND.

Lending or borrowing IDs and passwords constitutes fraudulent behavior. **Both the student who lent their credentials and the student who borrowed them will face consequences.** If violations occur on PCs in research labs or experiment rooms, the responsibility for usage privileges being revoked falls on the network administrator. Consequently, other students using the network may also lose access.





□ Computer Crime and Civil Liability

In cases where violations of MIND's usage regulations are severe, they may be treated as computer crimes and individuals may face criminal punishment.

Additionally, **they may incur civil liability for damages.**

(Examples: Unauthorized tampering or destruction of other users' data, defamation, obstructing business activities, illegal copying of software, etc.)



In case of criminal offenses, they will be subject to police investigation as criminal cases. Even if the actions were not intentional, liability for damages may arise depending on the nature and degree of negligence.

If you have engaged in violations of MIND's regulations or any other problematic actions that could potentially lead to legal liability, please promptly report to the Media Support Office at each campus or to Nakano Campus Office.





□ To ensure a comfortable network usage experience

It's important to recognize that, even in the online environment, it is necessary to use it in accordance with the common sense of being a member of society.

Network users should respect each other's personalities and lives, and strive to be considerate so that everyone can use the network comfortably.





▣ Guidelines and Conditions for Using MIND

URL: <https://www.meiji.ac.jp/mind/en/MINDLeaflet.html>

**Details are provided in the above guidelines.
Be sure to read them!**

You can also
access it via the
QR code.



Next is a
Confirmation
quiz!



Information after watching the video

The MIND Introductory Course is now complete. Thank you for your participation.

- If you have watched the entire video without skipping any parts and you have a perfect score on the final quiz, you have completed the course. Afterward, you will be registered in the system as having completed the course within approximately 2-3 business days.
- If you did not get a perfect score on the final quiz, please redo the quiz.
- You can check your registration status using the check system below (accessible only within the university).

<https://webapp01.ws.meiji.jp/mind/tool/internet-license/>

