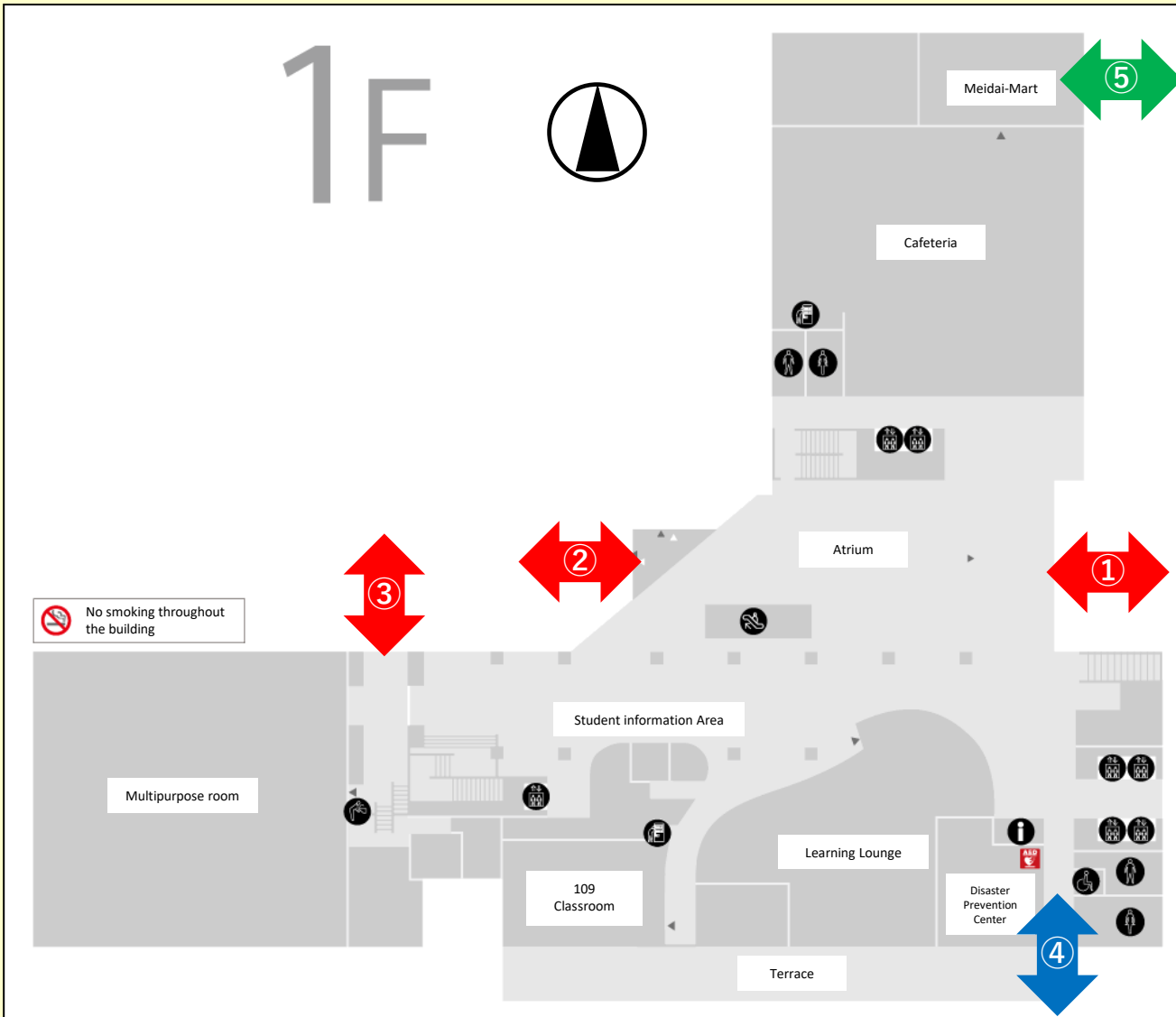


Nakano Campus Entry MAP

【From Tuesday, April 1, 2025 to Thursday, July 31, 2025】



Entry Hours

①②③

(Students, faculty & staff, permitted company personnel only)

【Weekday】 7:30~19:30 *1

【Sat】 7:30~14:00 *1

【Sun and holiday】 Closed *2

*1 Only from ③, you can leave during the following hours. (No entry allowed.)

【Weekday】 19:30~22:30

【Sat】 14:00~22:30

*2 Open on the days when classes are held on holidays.

④

【Eveyday】 7:00~22:30

◎ For visitors, please enter from ④ and register for entry at Disaster Prevention Center. Only authorized people are allowed to enter classrooms, study rooms, library, research lab area (7th to 14th floors of the High-Rise Wing), and other facilities for students and faculty members.

⑤

【Weekday】 8:30~12:00 *1

13:30~18:00 *1

【Sat, Sun and holiday】 Closed *2

*1 Closed when Meidai-Mart is closed.

*2 Open on the days when classes are held on holidays. However, closed on November 23.