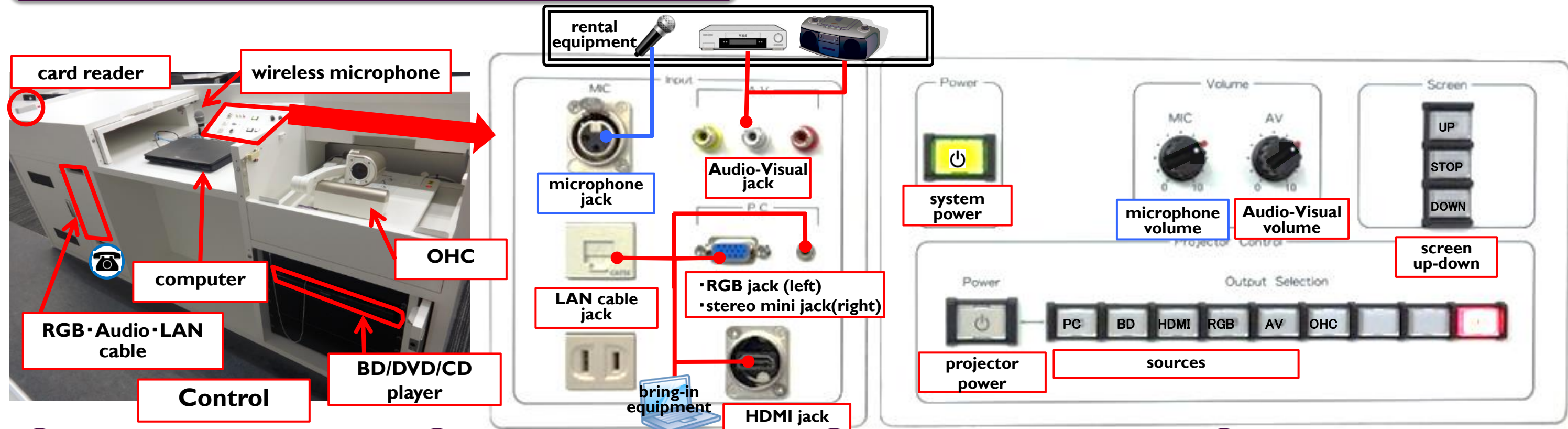


Technical reference for media classroom

Inquiry : Nakano Support Desk
(ext.8072)
(03-5343-8072)

manuals are on the web site.
http://www.meiji.ac.jp/nksd/facility_class-info.html



1 swipe the ID[S] card through the card reader to open the cabinet and turn on the system power.

2 to project sth onto the screen press [Projector power] button screen comes down automatically.

3 select the sources which you are using.

name	equipment
PC	computer
BD	BD/DVD/CD player
HDMI	bring-in equipment
RGB	
AV	rental equipment
OHC	OHC

4 to use bring-in/rental equipment connect with cables below.

- HDMI·RGB·Audio·LAN cables placed in class permanently.
- plug adapter for Apple, and other cables. please borrow from faculty room.

5 please adjust the Audio-Visual volume knob, before turning on the power of the equipment. 「●」is the standard position.

6 to adjust the volume for wireless microphone, use [MIC] volume knob. 「●」is the standard position.

7 After use... please set the volume knob [microphone/Audio-Visual] to a standard position 「●」

•Close the cabinet and please make sure the cabinet is LOCKED.

Internet connection need "Kyoutu-Ninsho" System Account (Faculty Number/Password).

troubleshooting



troubleshooting...

Inquiry : Nakano Support Desk
(ext.8072)
(03-5343-8072)

manuals are on the web site.
http://www.meiji.ac.jp/nksd/facility_class-info.html

Q1 projector won't show on the screen

A Verify the [projector power] switch is turned on (red).

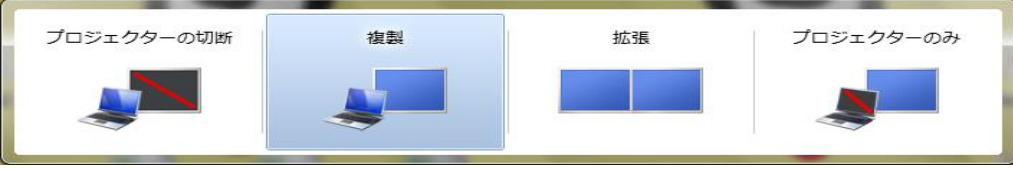
if the light is blinking, the projector is cooling down itself.
after the light went out, press [projector power] button.

A Try unplugging and plugging the cables.

permanent computer: **HDMI** socket at the left-side of the computer.
rental/bring-in equipment: both socket at the control panel and the equipment.



A [projecting PC] verify the presentation display mode to [Duplicate]

Windows	Press [Windows logo key] + [P] choose [Duplicate/複製] as below. 
Mac	Press [Command] + [F1]

※shortcut keys may varies with keyboard configuration and operating system

A If the problem persists, try the right-side procedure [Q4]

Q2 no sound from the speaker

A Try unplugging and plugging the cables.

permanent computer: **HDMI** socket at the left-side of the computer.
rental/bring-in equipment: both socket at the control panel and the equipment.

A If the problem persists, try the right-side procedure [Q4]

Q3 can't play the media by BD/DVD/CD player

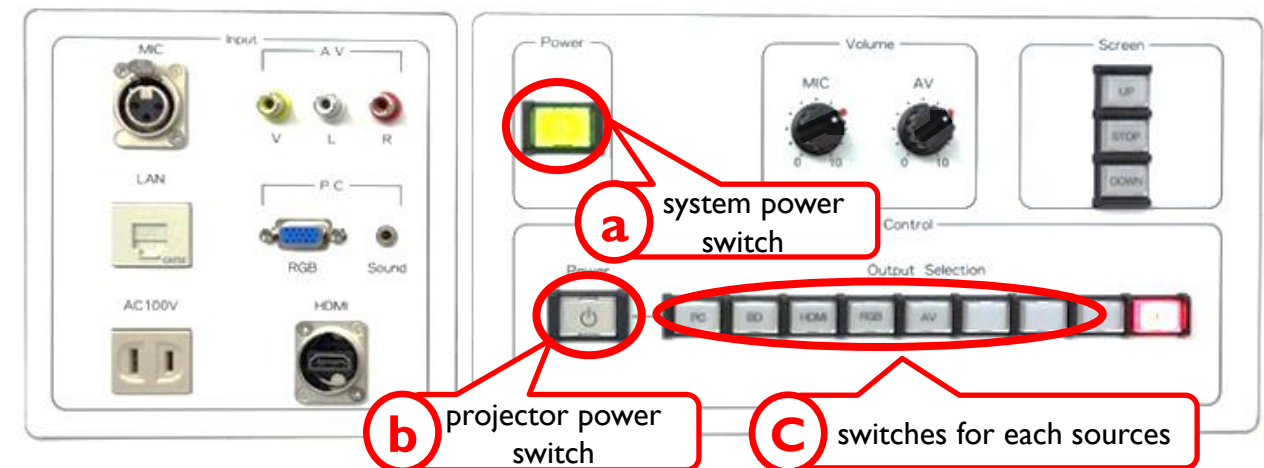
A Please reinsert the media.

A [If playing CD or DVD] use permanent computer.

Q4 If the problem persists

A Reboot the console system.

- (1) press (a) button. **※After operation, it will take about 5min. for the projector to be available.**
- (2) after (b) button went out, press (a) button to start the console system.
- (3) press (b) button and then select the source button at (c).



If the problem persists, please call Nakano Support Desk(ext.8072)